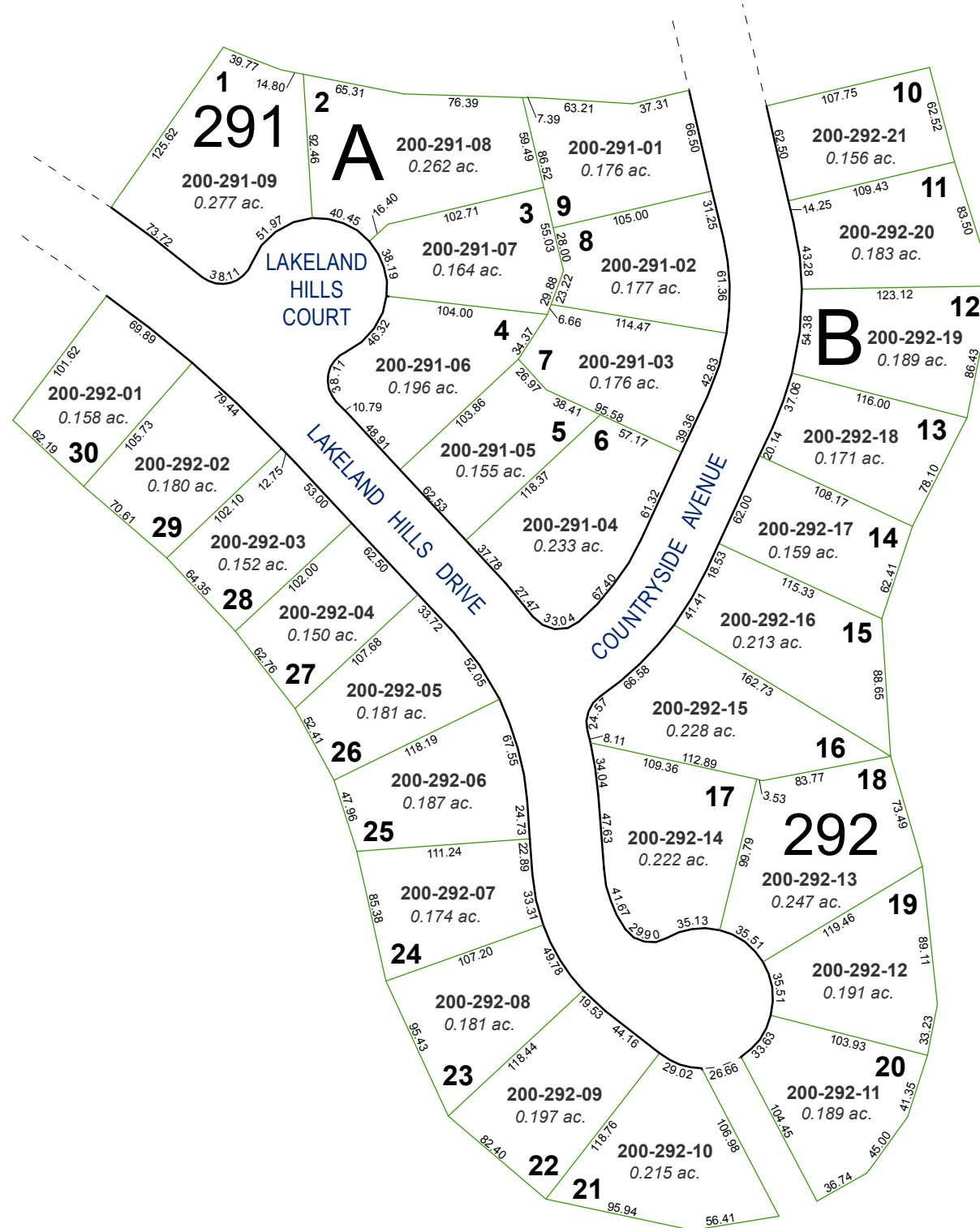


(#2854)
NORTHGATE UNIT NO. 7C
 PORTION OF NE¹/₄ SECTION 7
 T19N - R19E

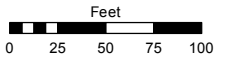


Assessor's Map Number

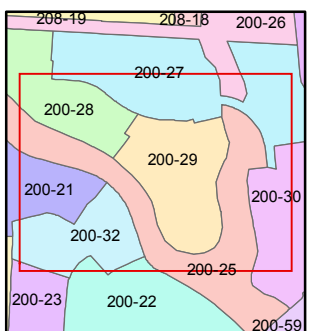
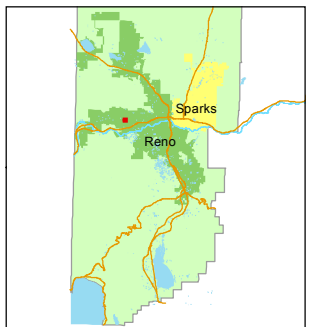
200-29

STATE OF NEVADA
WASHOE COUNTY
ASSESSOR'S OFFICE
 Joshua G. Wilson, Assessor

1001 East Ninth Street
 Building D
 Reno, Nevada 89512
 (775) 328-2231



1 inch = 100 feet



created by: EG 10/31/2013

last updated: _____

area previously shown on map(s)
039-73

NOTE: This map was prepared for the use of the Washoe County Assessor for assessment and illustrative purposes only. It does not represent a survey of the premises. No liability is assumed as to the sufficiency or accuracy of the data delineated hereon.