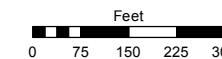
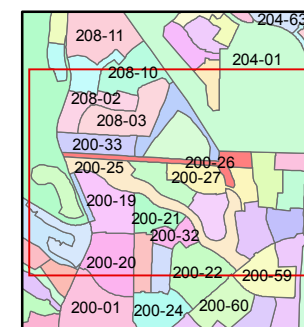
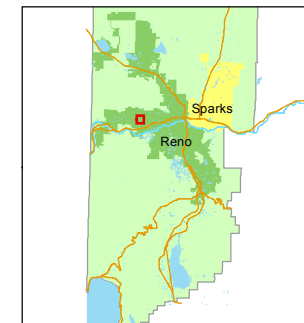


STATE OF NEVADA
WASHOE COUNTY
ASSESSOR'S OFFICE
Joshua G. Wilson, Assessor

1001 East Ninth Street
Building D
Reno, Nevada 89512
(775) 328-2231



1 inch = 300 feet



created by: EG 11/12/2013

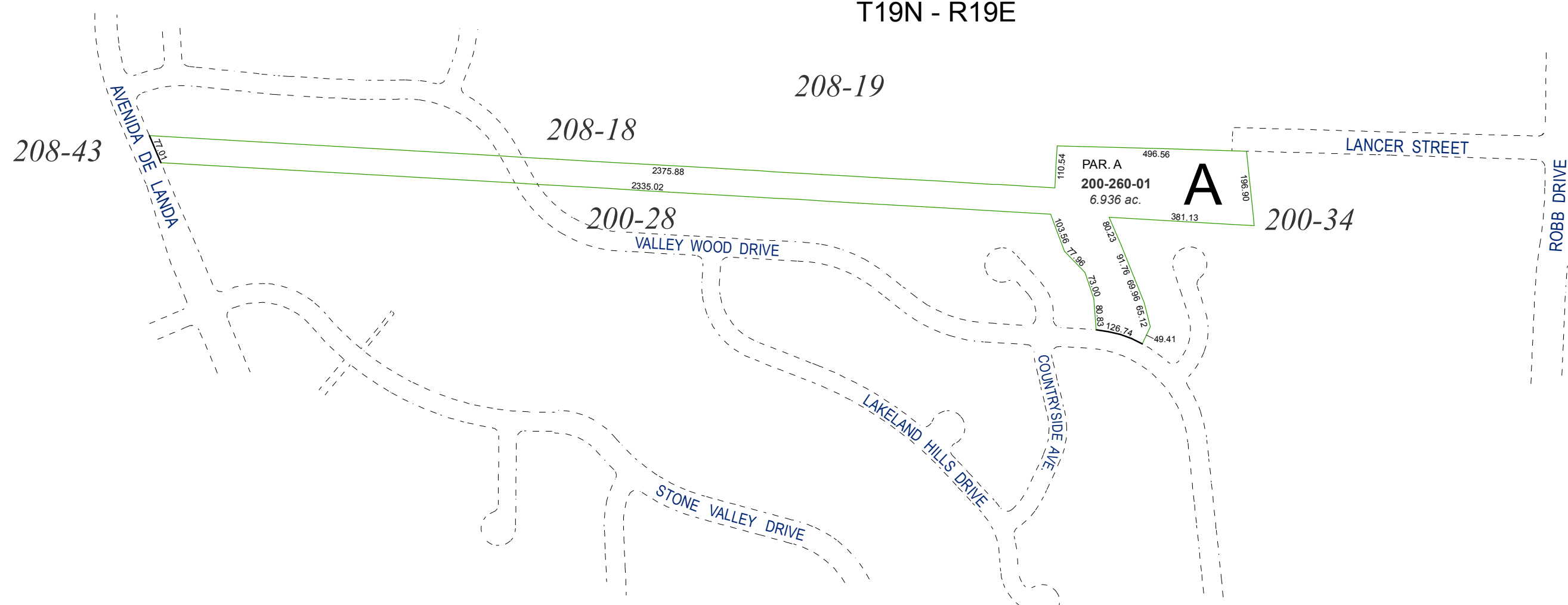
last updated: _____

area previously shown on map(s)

039-64

NOTE: This map was prepared for the use of the Washoe County Assessor for assessment and illustrative purposes only. It does not represent a survey of the premises. No liability is assumed as to the sufficiency or accuracy of the data delineated hereon.

(#2673)
NORTHGATE UNIT NO. 7A
PORTION OF SECTION 7
T19N - R19E



496.56
PAR. A
200-260-01
6.936 ac.
A
110.54
196.90
381.13
103.56 T1.98
80.23 91.76 89.96 65.12
73.00
126.74
49.41