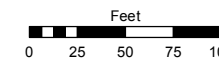


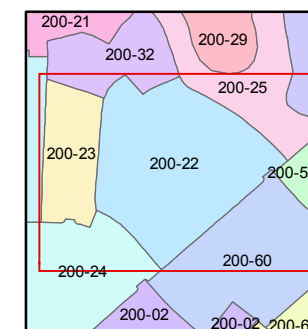
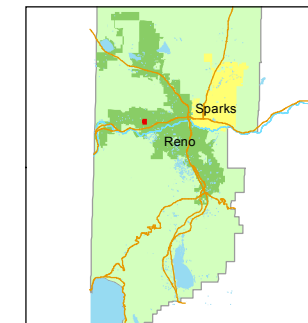
(#2092) NORTHGATE UNIT 1A PORTION OF SECTION 7 T19N - R19E

STATE OF NEVADA
WASHOE COUNTY
ASSESSOR'S OFFICE
Joshua G. Wilson, Assessor

1001 East Ninth Street
Building D
Reno, Nevada 89512
(775) 328-2231



1 inch = 100 feet



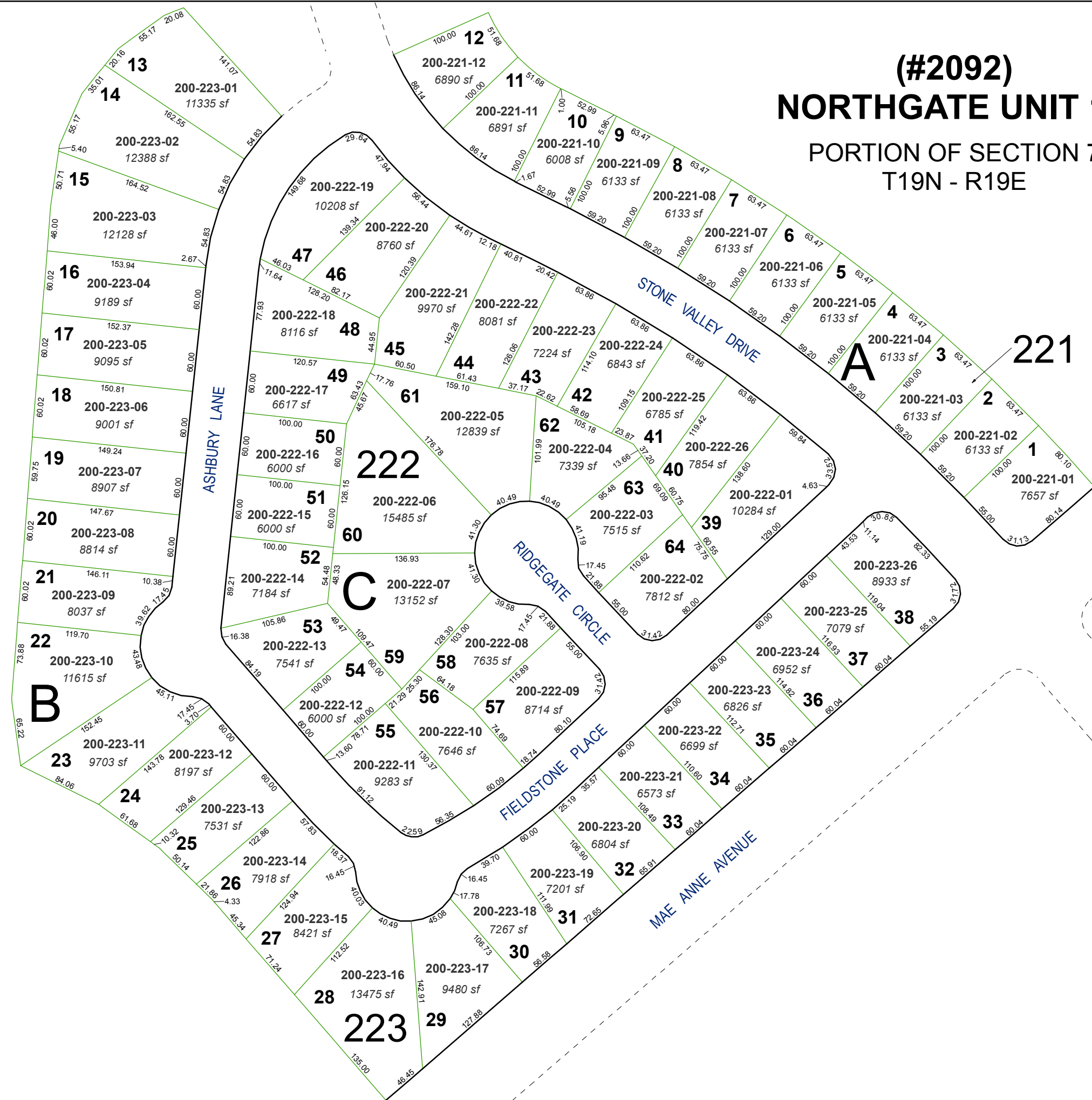
created by: EG 10/29/2013

last updated: _____

area previously shown on map(s)

039-30

NOTE: This map was prepared for the use of the Washoe County Assessor for assessment and illustrative purposes only. It does not represent a survey of the premises. No liability is assumed as to the sufficiency or accuracy of the data delineated hereon.



13
14
15
16
17
18
19
20
21
22
23
24
25
26
27
28
29

12
11
10
9
8
7
6
5
4
3
2
1
47
46
48
45
44
43
42
41
40
39
38
37
36
35
34
33
32
31
30
29

200-223-01
200-223-02
200-223-03
200-223-04
200-223-05
200-223-06
200-223-07
200-223-08
200-223-09
200-223-10
200-223-11
200-223-12
200-223-13
200-223-14
200-223-15
200-223-16
200-223-17

200-222-19
200-222-20
200-222-21
200-222-22
200-222-23
200-222-24
200-222-25
200-222-26
200-222-01
200-222-02
200-222-03
200-222-04
200-222-05
200-222-06
200-222-07
200-222-08
200-222-09

200-221-12
200-221-11
200-221-10
200-221-09
200-221-08
200-221-07
200-221-06
200-221-05
200-221-04
200-221-03
200-221-02
200-221-01