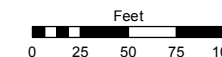
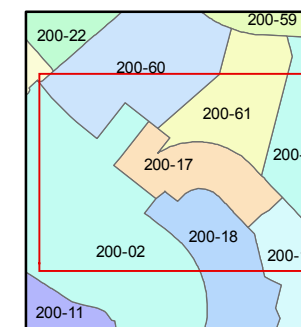
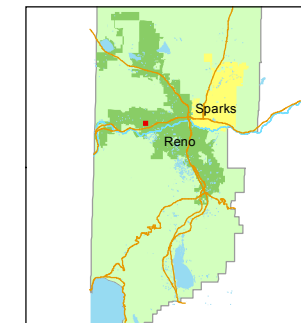


STATE OF NEVADA
WASHOE COUNTY
ASSESSOR'S OFFICE
Joshua G. Wilson, Assessor

1001 East Ninth Street
Building D
Reno, Nevada 89512
(775) 328-2231



1 inch = 100 feet



created by: EG 10/31/2013

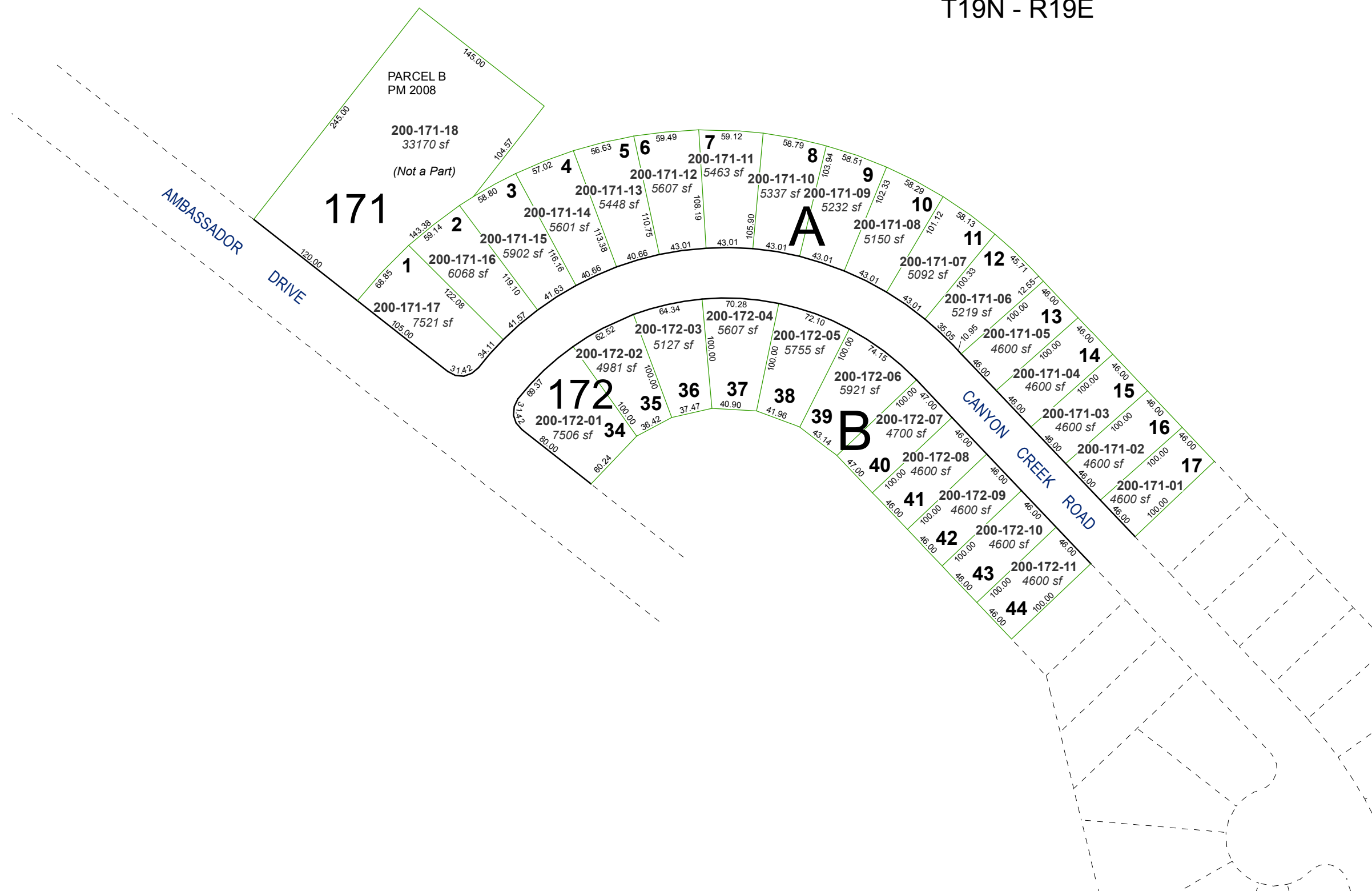
last updated: _____

area previously shown on map(s)

039-08

NOTE: This map was prepared for the use of the Washoe County Assessor for assessment and illustrative purposes only. It does not represent a survey of the premises. No liability is assumed as to the sufficiency or accuracy of the data delineated herein.

(#2158)
NORTHGATE NO. 2A
PORTION OF SE¼ SECTION 7
T19N - R19E



PARCEL B
PM 2008

200-171-18
33170 sf
(Not a Part)

171

AMBASSADOR
DRIVE

CANYON
CREEK ROAD

172

B

A