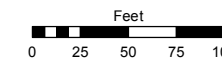


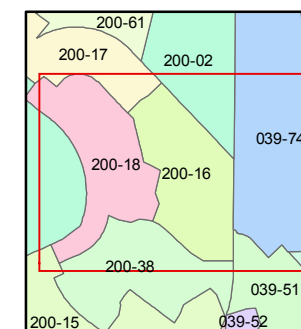
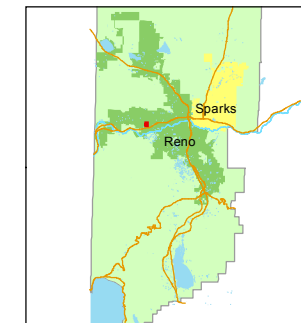
(#2158)
NORTHGATE NO. 2A
PORTION OF SE¼ SECTION 7
T19N - R19E

STATE OF NEVADA
WASHOE COUNTY
ASSESSOR'S OFFICE
Joshua G. Wilson, Assessor

1001 East Ninth Street
Building D
Reno, Nevada 89512
(775) 328-2231



1 inch = 100 feet



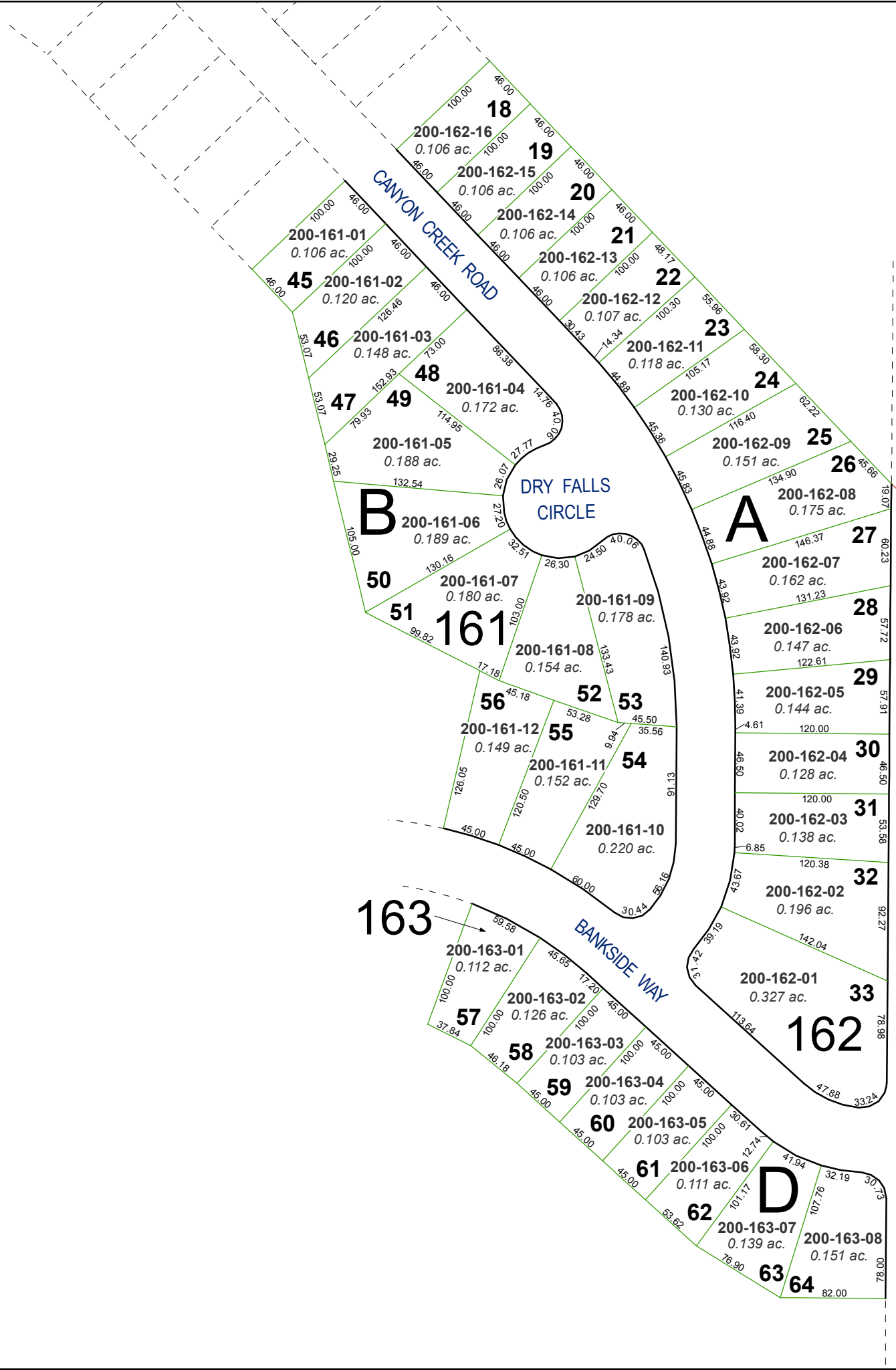
created by: EG 10/24/2013

last updated: _____

area previously shown on map(s)

039-07

NOTE: This map was prepared for the use of the Washoe County Assessor for assessment and illustrative purposes only. It does not represent a survey of the premises. No liability is assumed as to the sufficiency or accuracy of the data delineated hereon.



7 8

S43-32-26E
N00-24-55E
768.65'

ROBB DRIVE