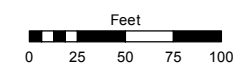
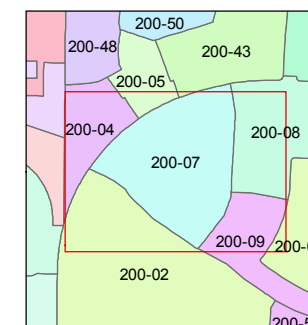
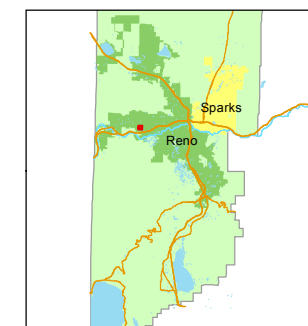


STATE OF NEVADA
WASHOE COUNTY
ASSESSOR'S OFFICE

1001 East Ninth Street, Building D
Reno, Nevada 89512
(775) 328-2231



1 inch = 100 feet



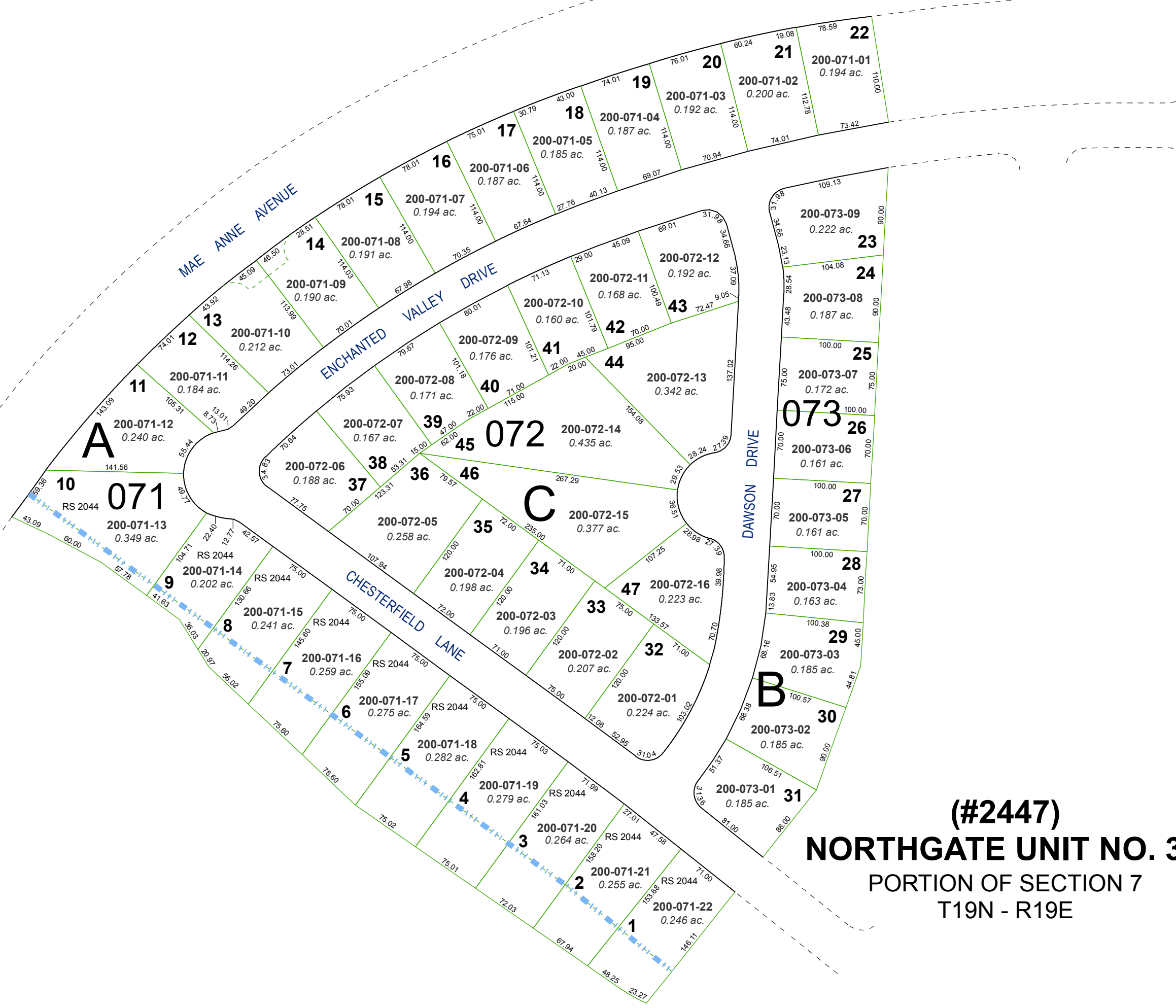
created by: EG 10/23/2013

updated: SR 03/11/19

area previously shown on map(s):

039-43

NOTE: This map was prepared for the use of the Washoe County Assessor for assessment and illustrative purposes only. It does not represent a survey of the premises. No liability is assumed as to the sufficiency or accuracy of the data delineated hereon.



(#2447)
NORTHGATE UNIT NO. 3C
PORTION OF SECTION 7
T19N - R19E