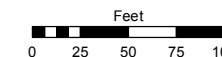
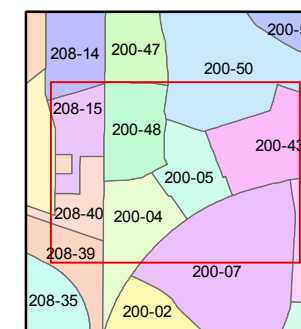
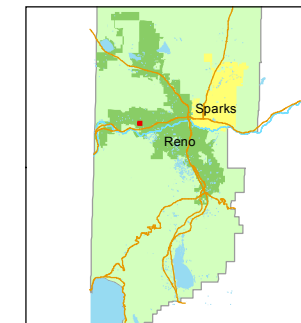


STATE OF NEVADA
WASHOE COUNTY
ASSESSOR'S OFFICE
Joshua G. Wilson, Assessor

1001 East Ninth Street
Building D
Reno, Nevada 89512
(775) 328-2231



1 inch = 100 feet



created by: EG 10/24/2013

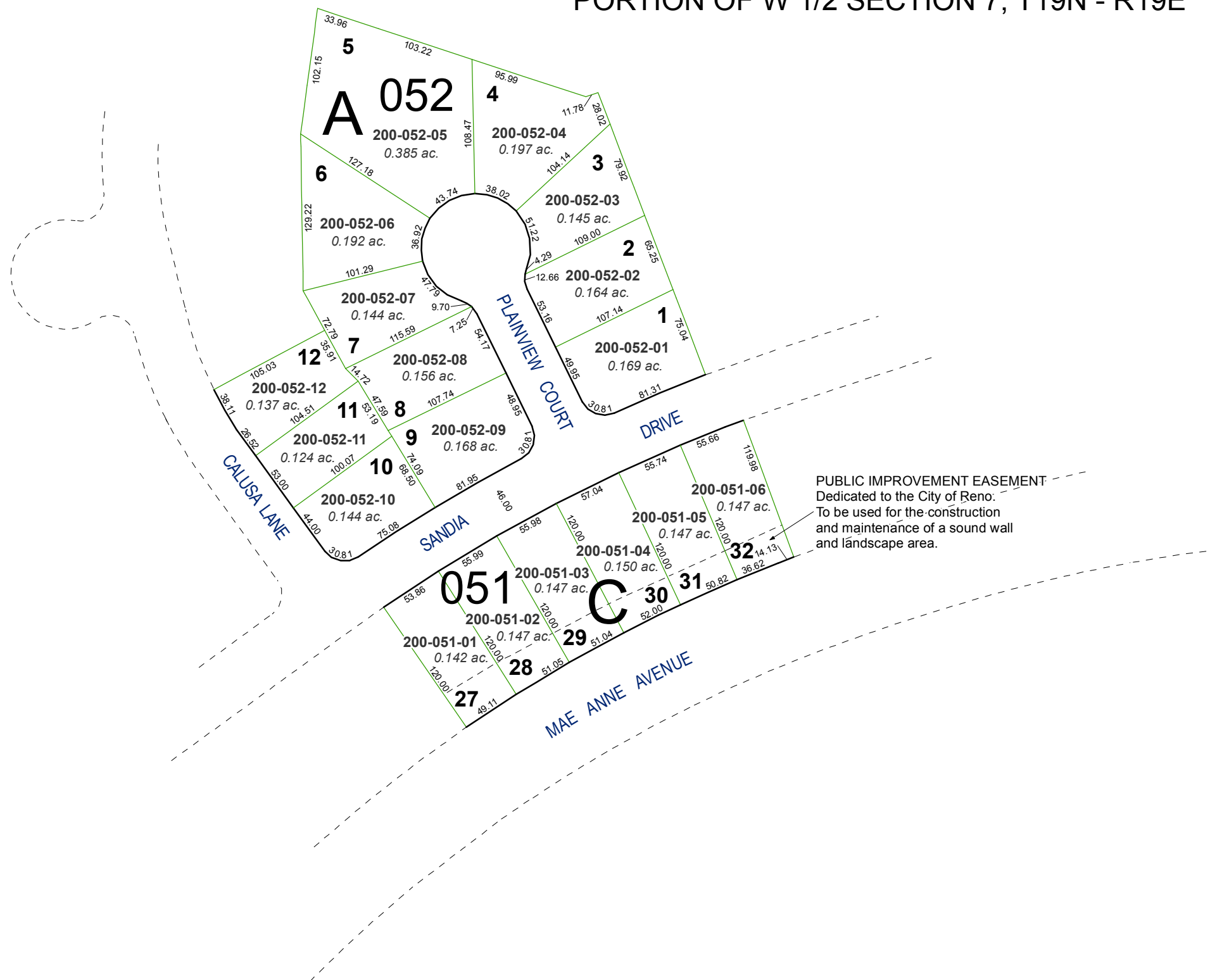
last updated: _____

area previously shown on map(s)

039-15

NOTE: This map was prepared for the use of the Washoe County Assessor for assessment and illustrative purposes only. It does not represent a survey of the premises. No liability is assumed as to the sufficiency or accuracy of the data delineated hereon.

(#3109)
NORTHGATE UNIT NO. 14B
PORTION OF W 1/2 SECTION 7, T19N - R19E



PUBLIC IMPROVEMENT EASEMENT
Dedicated to the City of Reno:
To be used for the construction
and maintenance of a sound wall
and landscape area.