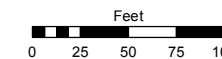
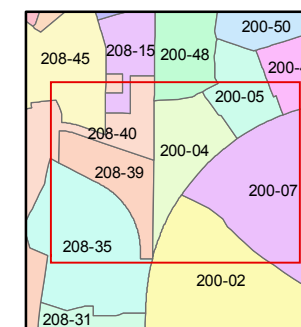
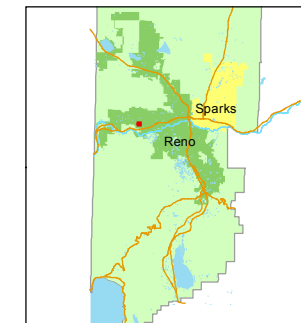


STATE OF NEVADA  
**WASHOE COUNTY**  
ASSESSOR'S OFFICE  
Joshua G. Wilson, Assessor

1001 East Ninth Street  
Building D  
Reno, Nevada 89512  
(775) 328-2231



1 inch = 100 feet



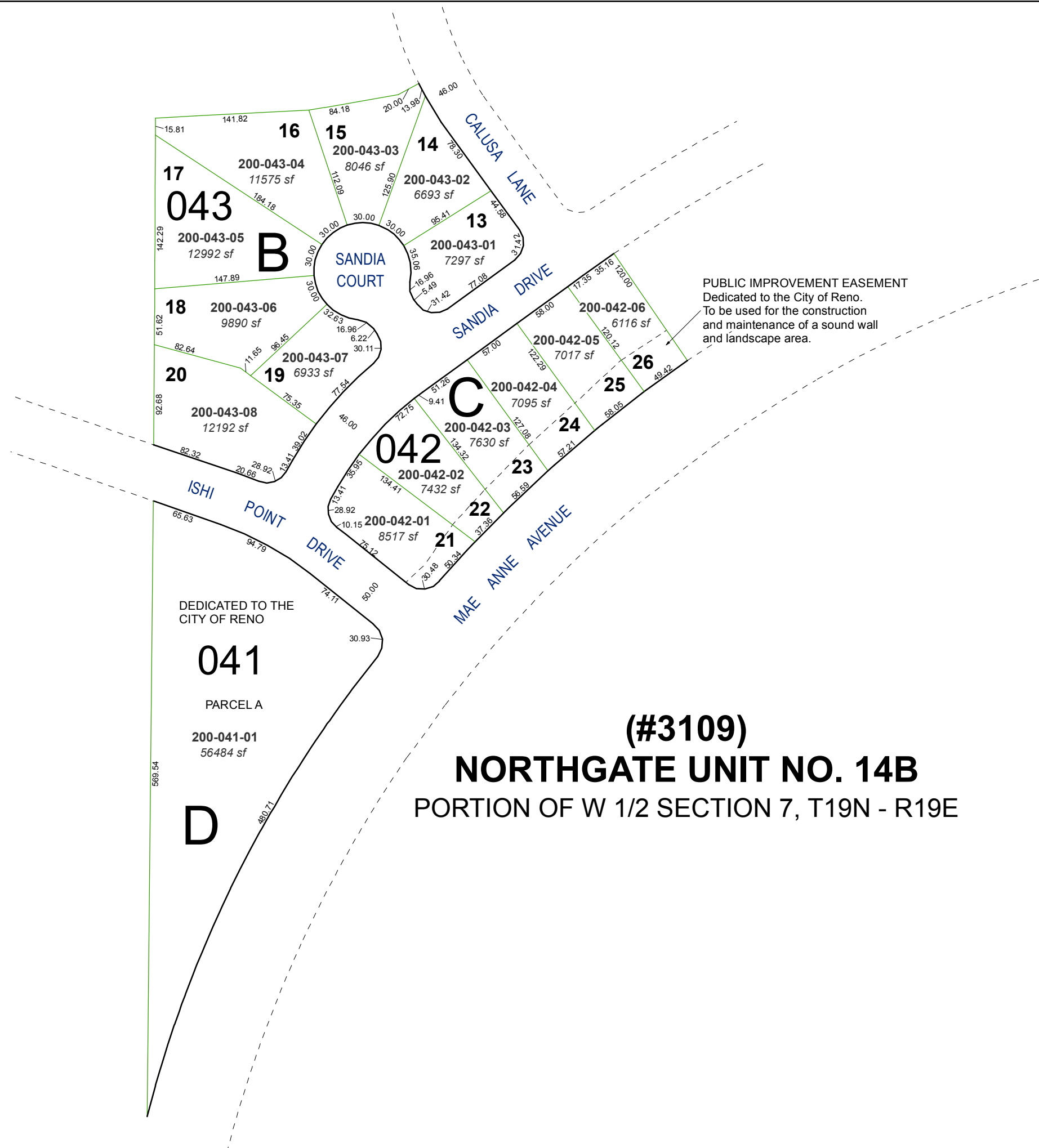
created by: EG 10/22/2013

last updated: \_\_\_\_\_

area previously shown on map(s)

039-15

NOTE: This map was prepared for the use of the Washoe County Assessor for assessment and illustrative purposes only. It does not represent a survey of the premises. No liability is assumed as to the sufficiency or accuracy of the data delineated hereon.



PUBLIC IMPROVEMENT EASEMENT  
Dedicated to the City of Reno.  
To be used for the construction  
and maintenance of a sound wall  
and landscape area.

DEDICATED TO THE  
CITY OF RENO

**041**

PARCEL A

200-041-01  
56484 sf

**D**

**(#3109)**  
**NORTHGATE UNIT NO. 14B**  
PORTION OF W 1/2 SECTION 7, T19N - R19E