

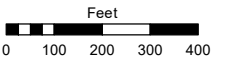
PORTION OF SECTION 7, T19N - R19E

Assessor's Map Number

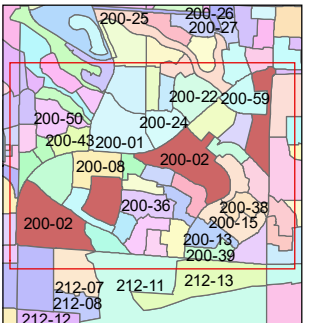
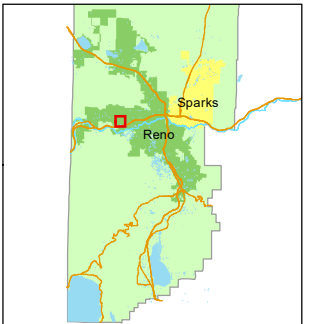
200-02

STATE OF NEVADA
WASHOE COUNTY
ASSESSOR'S OFFICE

1001 East Ninth Street, Building D
 Reno, Nevada 89512
 (775) 328-2231



1 inch = 400 feet



created by: EG 11/21/2013

updated: JRA 9/21/21

area previously shown on map(s):

039-03

NOTE: This map was prepared for the use of the Washoe County Assessor for assessment and illustrative purposes only. It does not represent a survey of the premises. No liability is assumed as to the sufficiency or accuracy of the data delineated hereon.

