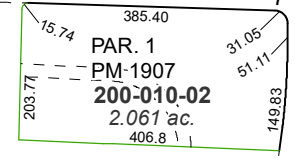


PORTION OF N½ SECTION 7
T19N - R19E

LANCER ST.

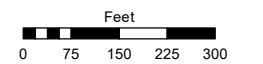


Assessor's Map Number

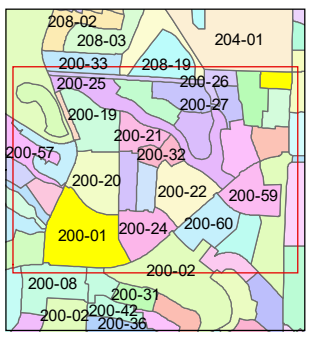
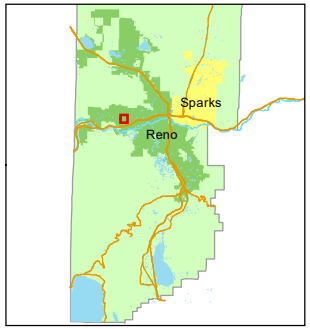
200-01

STATE OF NEVADA
WASHOE COUNTY
ASSESSOR'S OFFICE

1001 East Ninth Street, Building D
Reno, Nevada 89512
(775) 328-2231



1 inch = 300 feet



created by: EG 11/21/2013

updated: JRA 5/20/22

area previously shown on map(s):
039-03

NOTE: This map was prepared for the use of the Washoe County Assessor for assessment and illustrative purposes only. It does not represent a survey of the premises. No liability is assumed as to the sufficiency or accuracy of the data delineated hereon.

