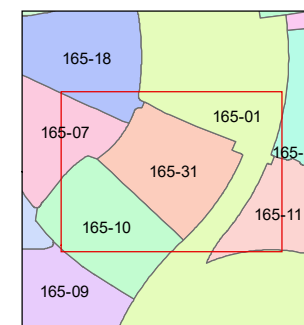
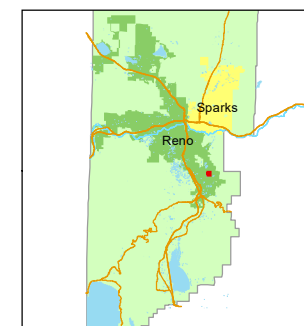


STATE OF NEVADA
WASHOE COUNTY
ASSESSOR'S OFFICE

1001 East Ninth Street, Building D
Reno, Nevada 89512
(775) 328-2231



1 inch = 80 feet



created by: SR 08/17/2018

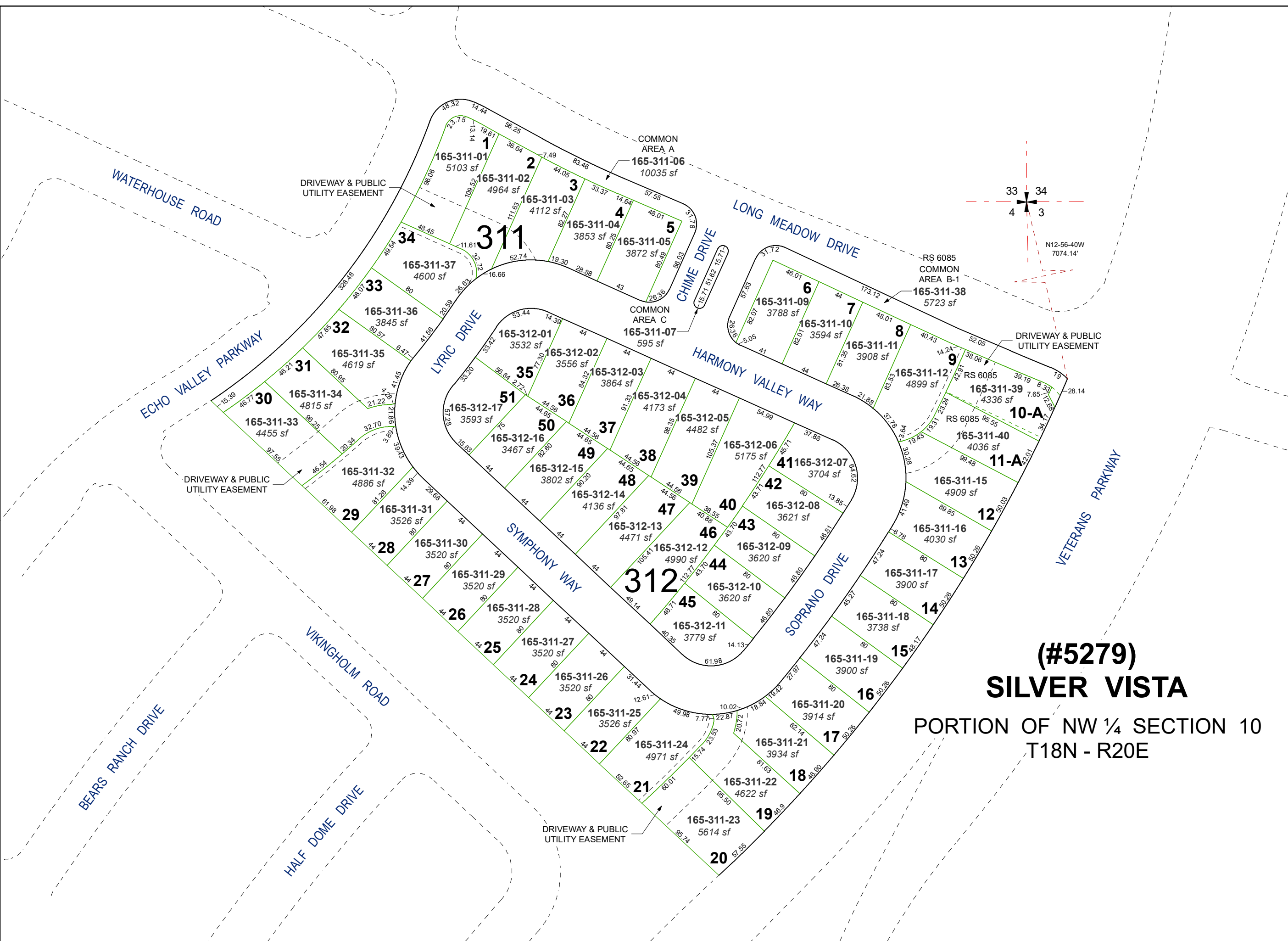
updated: SR 05/16/19 SR 10/02/19

SR 07/11/20

area previously shown on map(s):

165-06

NOTE: This map was prepared for the use of the Washoe County Assessor for assessment and illustrative purposes only. It does not represent a survey of the premises. No liability is assumed as to the sufficiency or accuracy of the data delineated hereon.



(#5279)
SILVER VISTA
PORTION OF NW ¼ SECTION 10
T18N - R20E