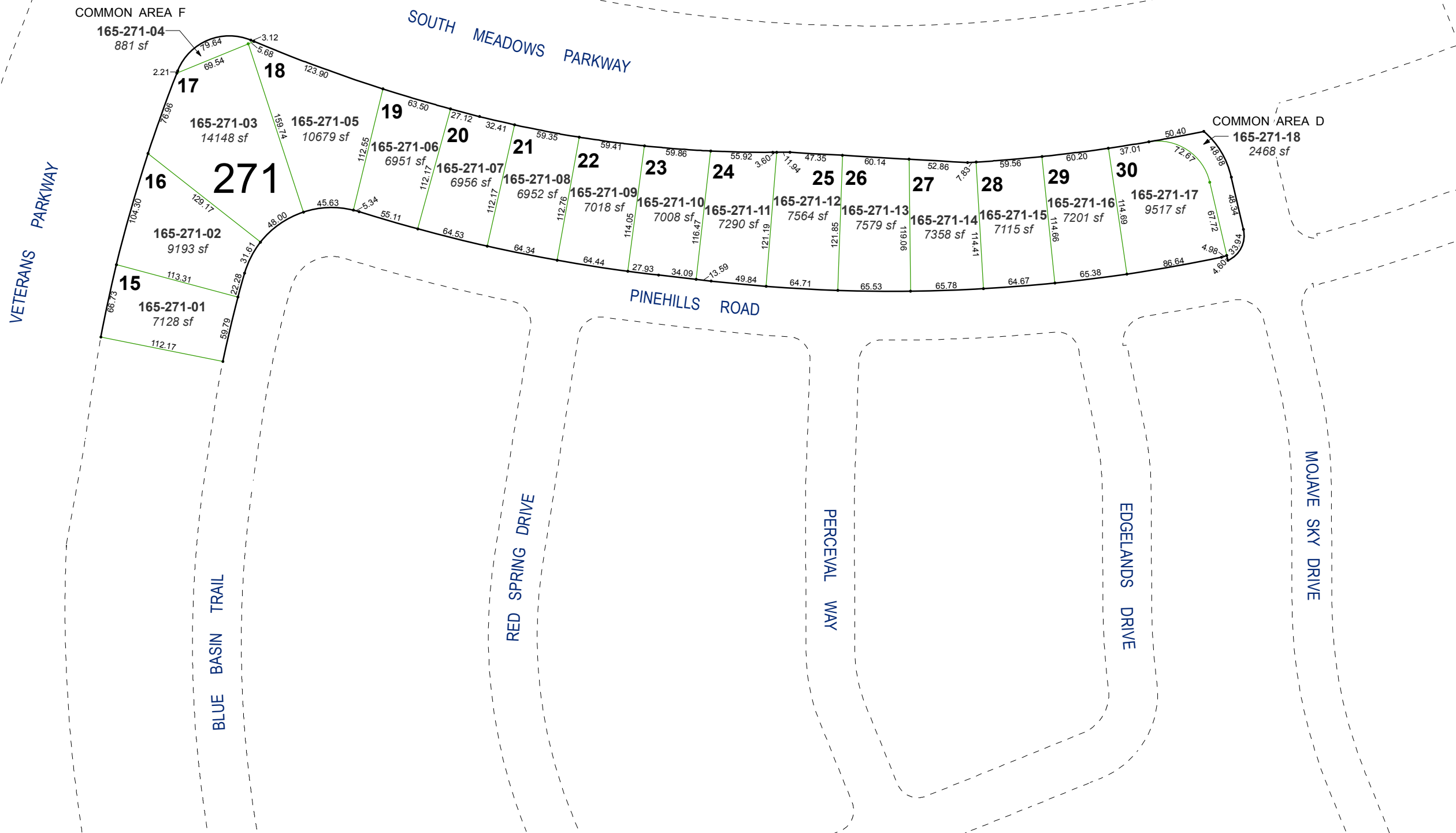


(#5214) BELLA VISTA RANCH VILLAGE C

A PLANNED UNIT DEVELOPMENT

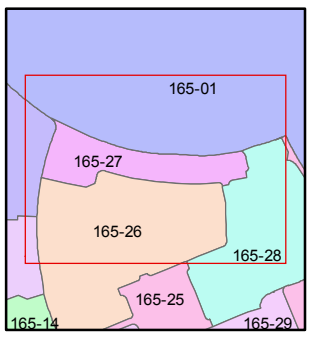
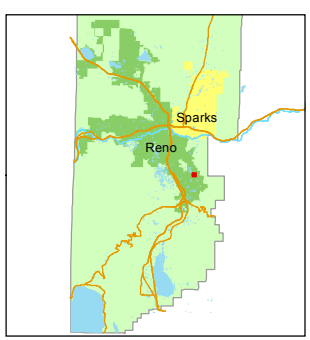
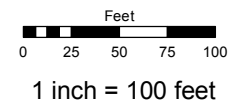
PORTION OF S1/2 SECTION 3
& PORTION OF N1/2 SECTION 10
T18N - R20E



Assessor's Map Number
165-27

STATE OF NEVADA
WASHOE COUNTY
ASSESSOR'S OFFICE
Michael E. Clark, Assessor

1001 East Ninth Street
Building D
Reno, Nevada 89512
(775) 328-2231



created by: SR 07/11/2017
last updated: _____
area previously shown on map(s)
165-01

NOTE: This map was prepared for the use of the Washoe County Assessor for assessment and illustrative purposes only. It does not represent a survey of the premises. No liability is assumed as to the sufficiency or accuracy of the data delineated hereon.