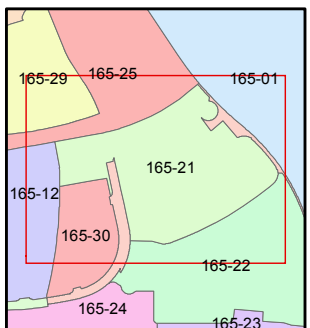
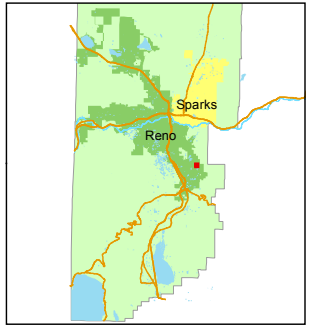
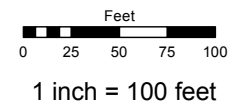


(#5185)
BELLA VISTA RANCH
VILLAGE D UNIT 2
 A PLANNED UNIT DEVELOPMENT
 PORTION OF N½ SECTION 10
 T18N - R20E

Assessor's Map Number
165-21

STATE OF NEVADA
WASHOE COUNTY
 ASSESSOR'S OFFICE
 Michael E. Clark, Assessor

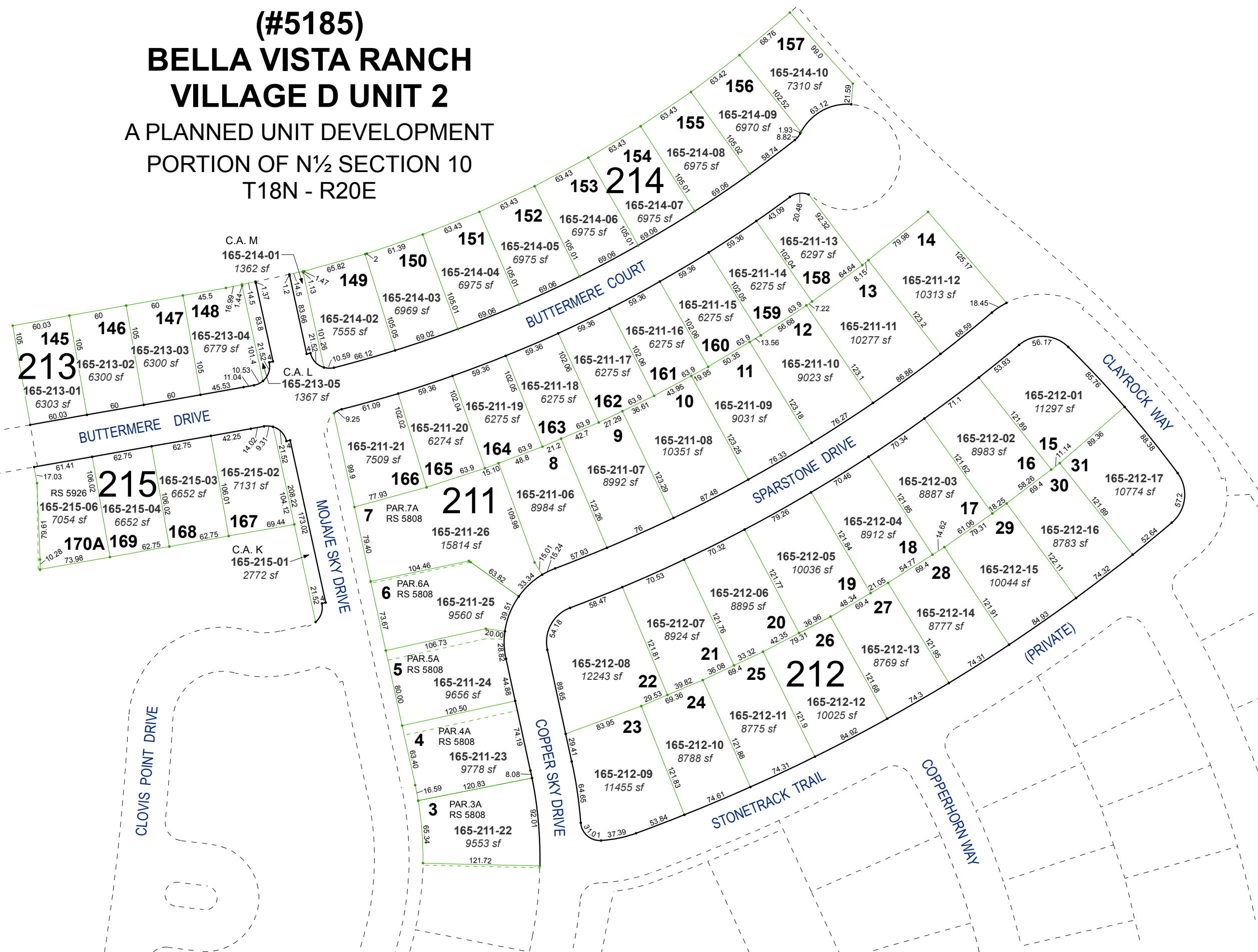
1001 East Ninth Street
 Building D
 Reno, Nevada 89512
 (775) 328-2231



created by: EMG 11/10/2016
 last updated: SR 3/16/17 SR 3/15/18

area previously shown on map(s)
165-01

NOTE: This map was prepared for the use of the Washoe County Assessor for assessment and illustrative purposes only. It does not represent a survey of the premises. No liability is assumed as to the sufficiency or accuracy of the data delineated hereon.



Note: C.A. = COMMON AREA
 Roads are Parcelled on Page 165-20