

(#4802) BELLA VISTA RANCH - VILLAGE D, UNIT NO. 1

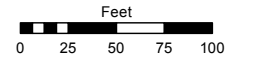
PORTION OF N½ SECTION 10
T18N - R20E

Assessor's Map Number

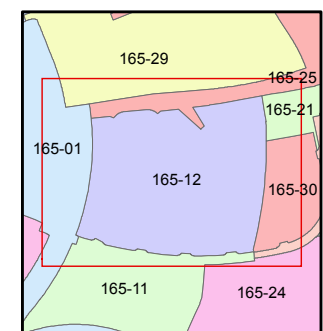
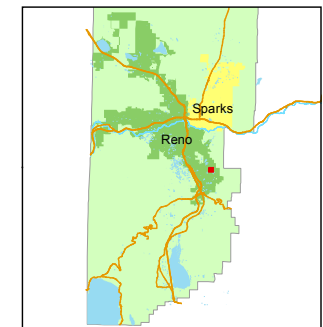
165-12

STATE OF NEVADA
WASHOE COUNTY
ASSESSOR'S OFFICE
Michael E. Clark, Assessor

1001 East Ninth Street
Building D
Reno, Nevada 89512
(775) 328-2231



1 inch = 100 feet



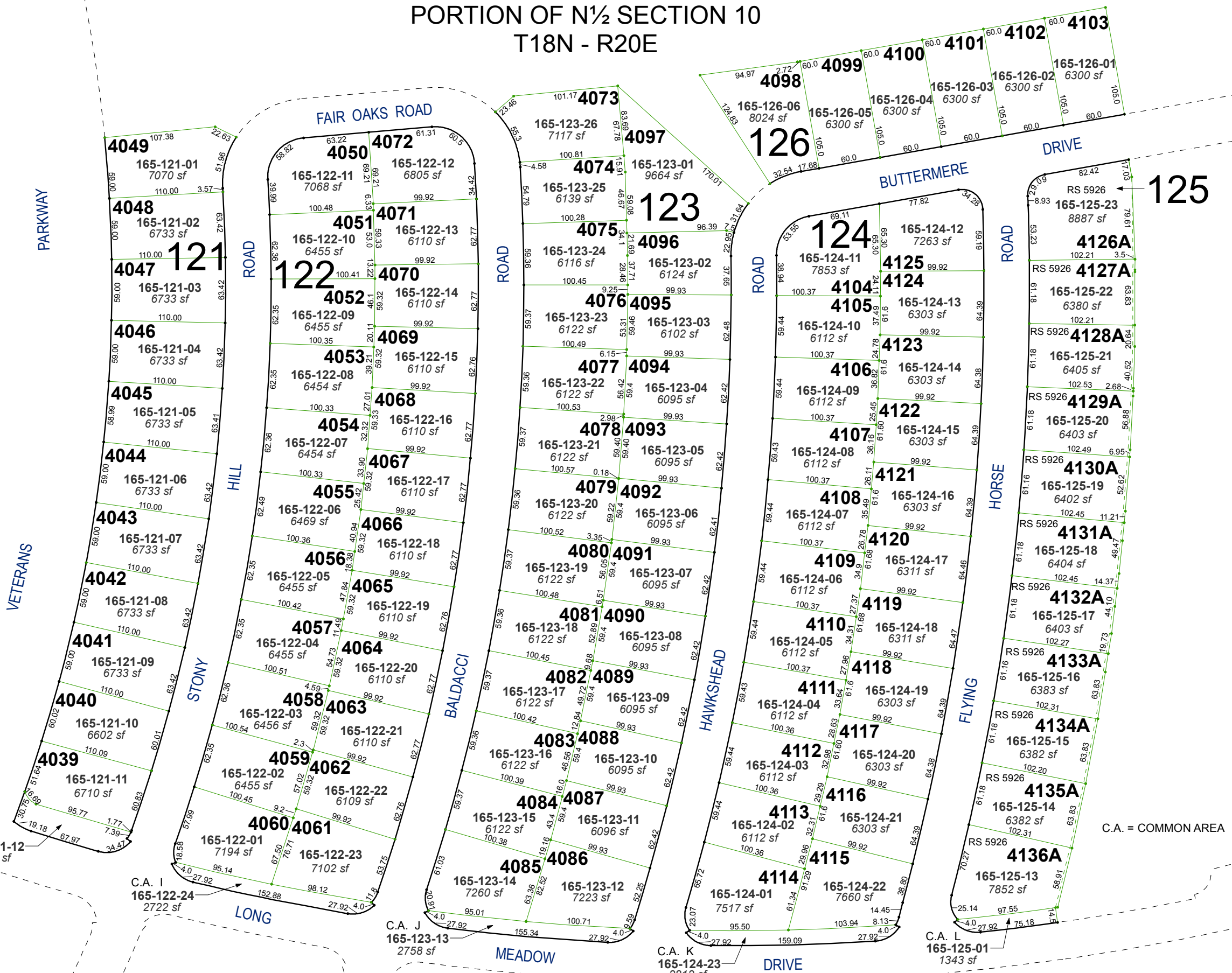
created by: NLH 06/04/2012

last updated: SR 3/30/17 SR 3/15/18

area previously shown on map(s)

165-01

NOTE: This map was prepared for the use of the Washoe County Assessor for assessment and illustrative purposes only. It does not represent a survey of the premises. No liability is assumed as to the sufficiency or accuracy of the data delineated hereon.



C.A. = COMMON AREA