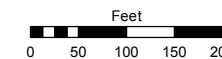
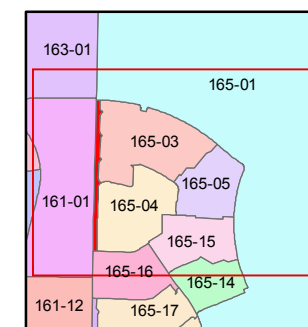
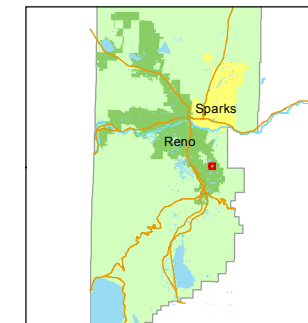


STATE OF NEVADA
WASHOE COUNTY
ASSESSOR'S OFFICE
Michael E. Clark, Assessor

1001 East Ninth Street
Building D
Reno, Nevada 89512
(775) 328-2231



1 inch = 200 feet



created by: NLH 6/04/2012

last updated: EMG 10/5/15

area previously shown on map(s)

165-01

NOTE: This map was prepared for the use of the Washoe County Assessor for assessment and illustrative purposes only. It does not represent a survey of the premises. No liability is assumed as to the sufficiency or accuracy of the data delineated hereon.

(#4782)
BELLA VISTA VILLAGE A
UNIT 1
A POR. OF THE SW ¼ OF SEC. 3
T18N - R20E

