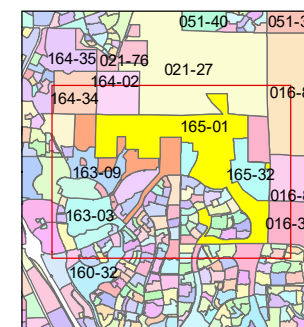
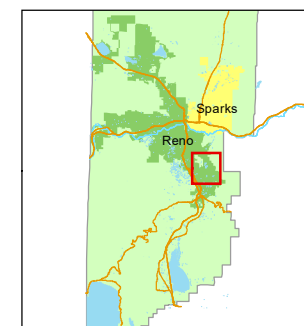


1 inch = 1,000 feet



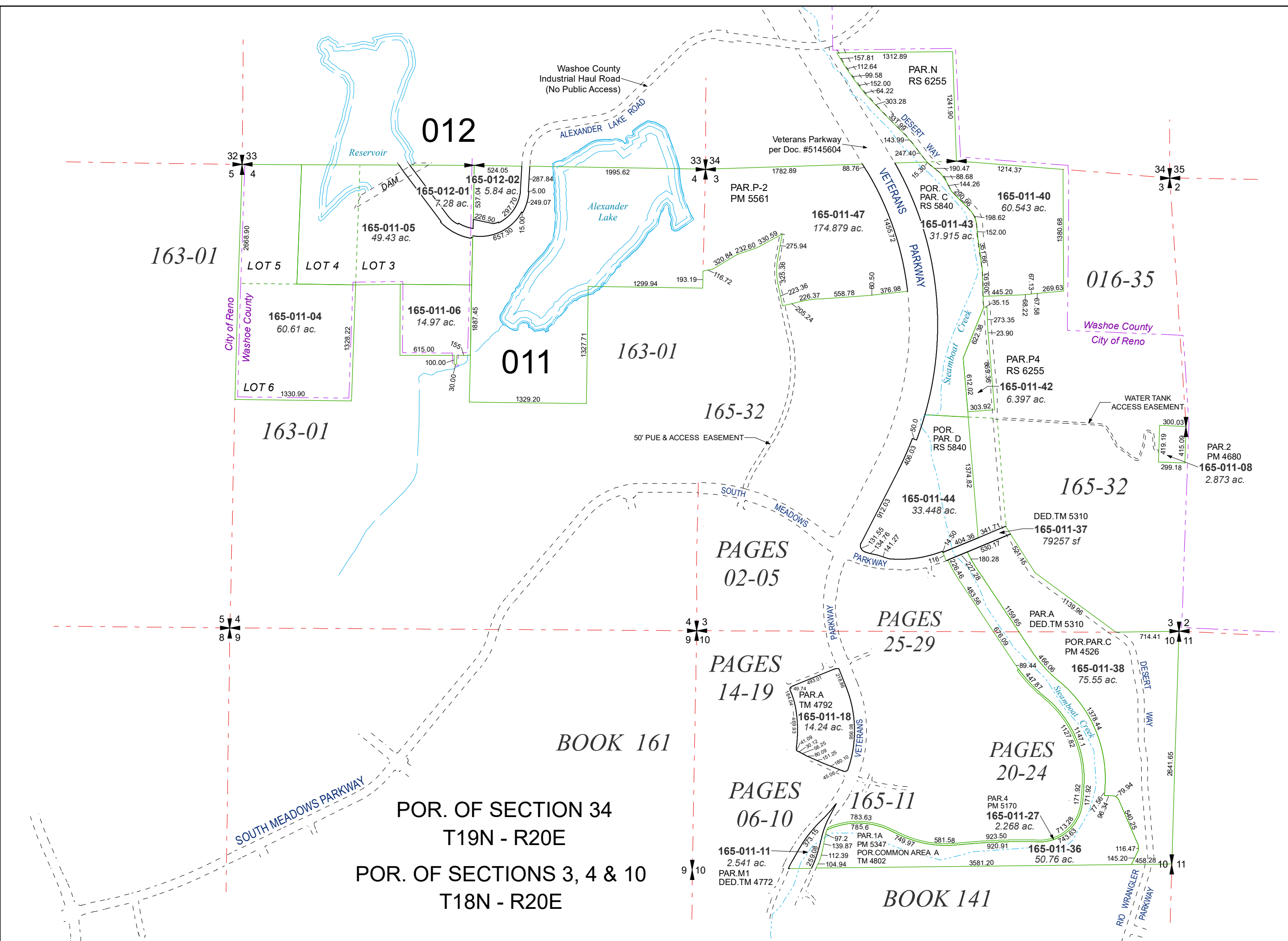
created by: CFB 09/17/2009

updated: KSB 07/19/21 SR 10/20/21

SR 10/22/21

area previously shown on map(s):

NOTE: This map was prepared for the use of the Washoe County Assessor for assessment and illustrative purposes only. It does not represent a survey of the premises. No liability is assumed as to the sufficiency or accuracy of the data delineated hereon.



POR. OF SECTION 34
T19N - R20E
POR. OF SECTIONS 3, 4 & 10
T18N - R20E