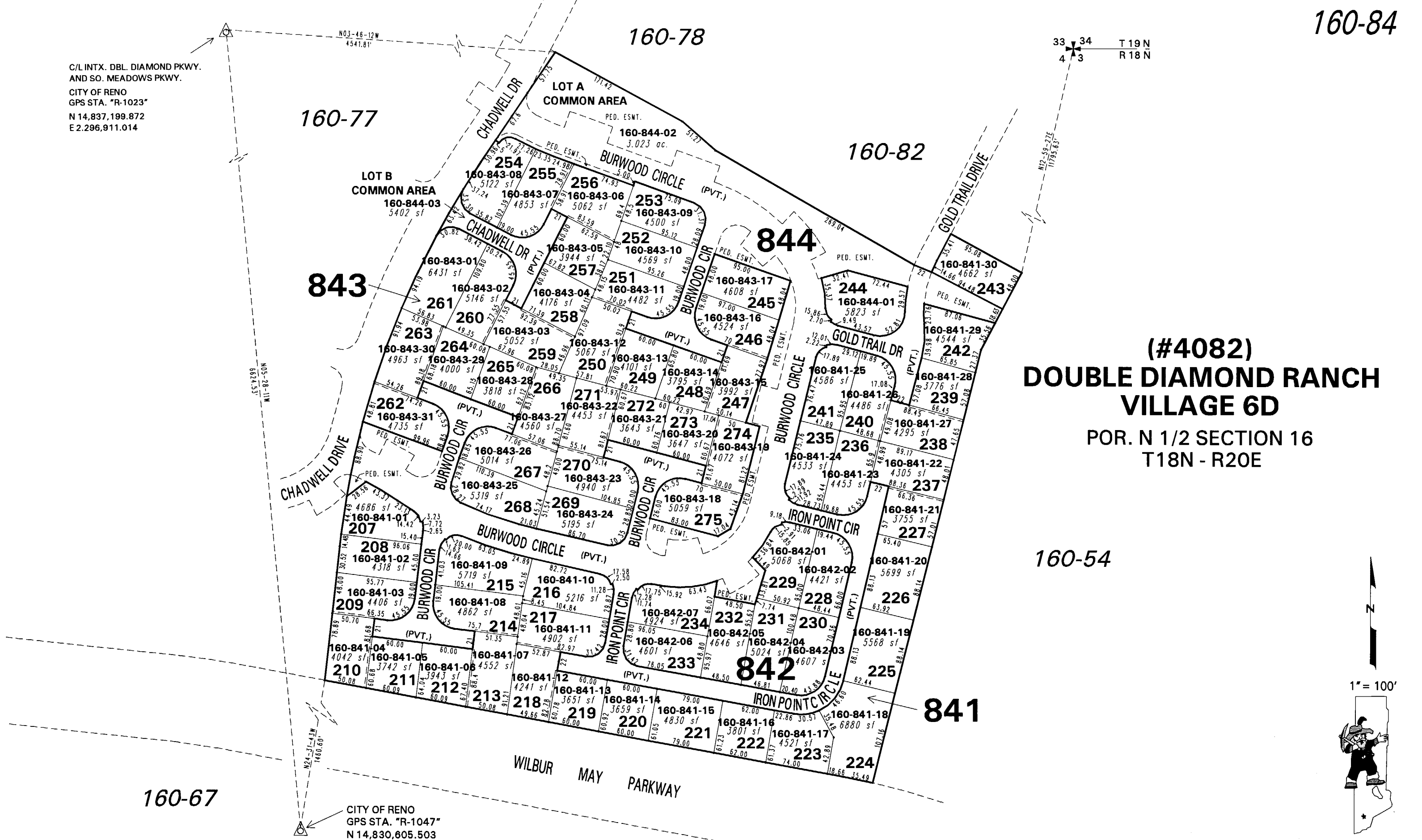


C/L INTX. DBL. DIAMOND PKWY.
AND SO. MEADOWS PKWY.
CITY OF RENO
GPS STA. "R-1023"
N 14,837, 199.872
E 2,296,911.014

33 34
4 3 T 19 N
R 18 N



**(#4082)
DOUBLE DIAMOND RANCH
VILLAGE 6D**
POR. N 1/2 SECTION 16
T18N - R20E

160-54

1" = 100'



NOTE: This map is prepared for the use of the Washoe County Assessor for assessment and illustrative purposes only. It does not represent a survey of the premises. No liability is assumed as to the sufficiency or the accuracy of the data delineated hereon.

160-66 160-68
Office of Washoe County Assessor, Nevada - Joshua G. Wilson

This area previously shown on 160-54

NOTE: Areas of parcels which are less than 2 acres are shown in square feet.

Drawn by HCS 06/06/02
Revised NLH 8/27/07