

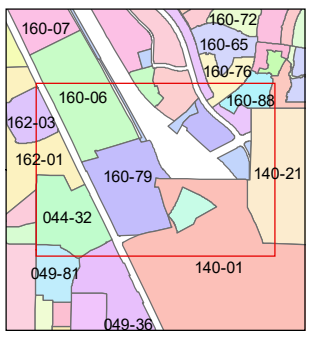
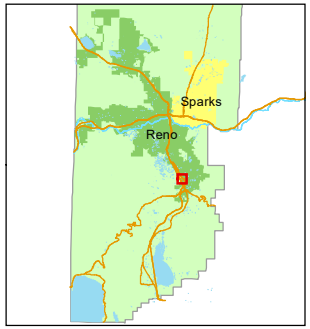
PORTIONS OF THE SW ¼ OF SEC. 16
AND OF THE SE ¼ OF SEC. 17
T18N - R20E

Assessor's Map Number
160-79

STATE OF NEVADA
WASHOE COUNTY
ASSESSOR'S OFFICE
1001 East Ninth Street, Building D
Reno, Nevada 89512
(775) 328-2231

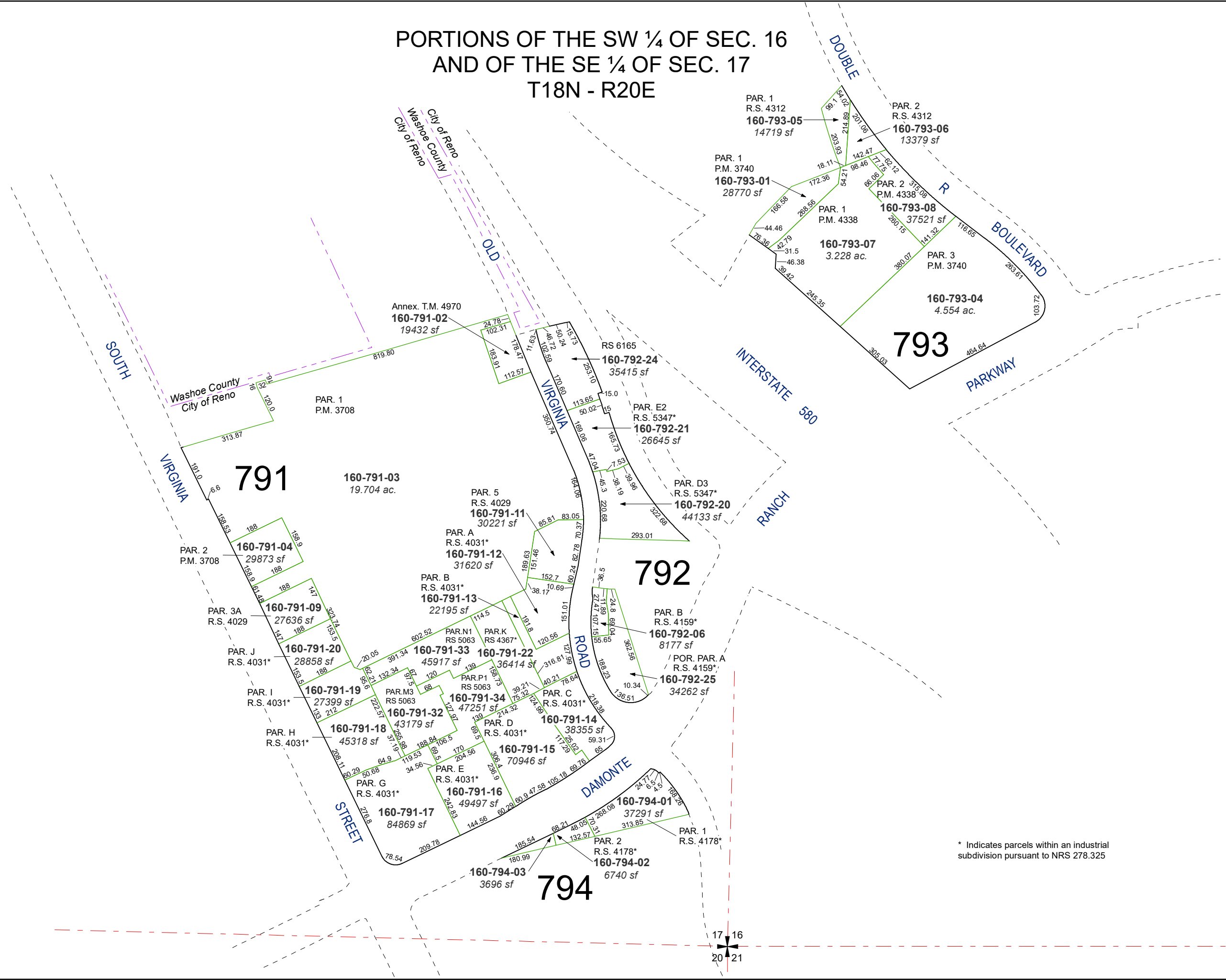


Feet
0 75 150 225 300
1 inch = 300 feet



created by: NLH 07/06/2011
updated: CFB 04/07/14 KSB 11/24/15
SR 01/29/20 SR 06/23/20
area previously shown on map(s):
160-03

NOTE: This map was prepared for the use of the Washoe County Assessor for assessment and illustrative purposes only. It does not represent a survey of the premises. No liability is assumed as to the sufficiency or accuracy of the data delineated hereon.



* Indicates parcels within an industrial subdivision pursuant to NRS 278.325

17 16
20 21