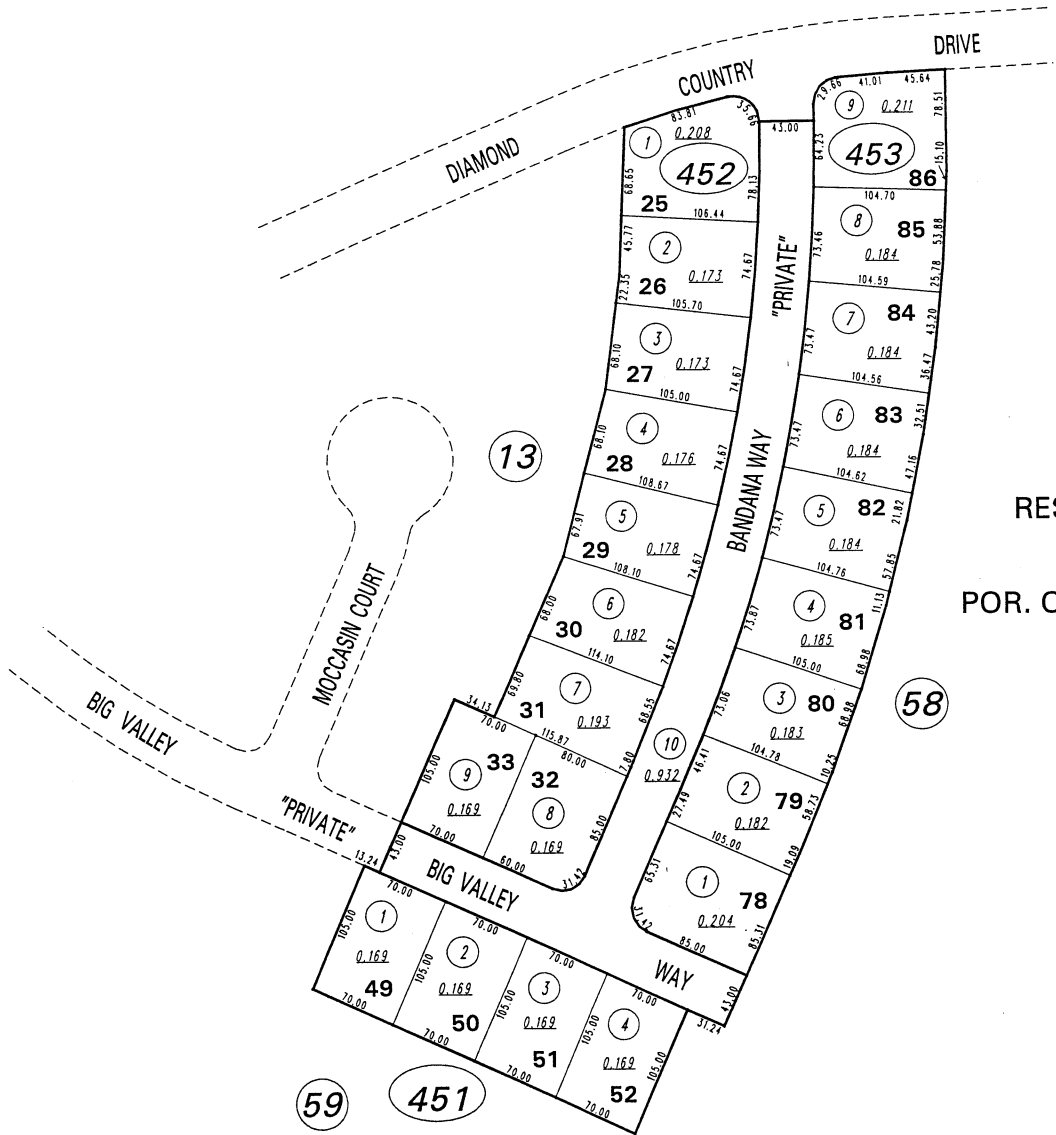
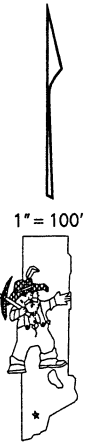


13



(3443)
DOUBLE DIAMOND RANCH
 RESIDENTIAL DEVELOPMENT VILLAGE NO. 12-B
 PLANNED UNIT DEVELOPMENT
 POR. OF PAR.12, DOUBLE DIAMOND RANCH UNIT NO. 1
 PORTION OF SECTION 9, T18N - R20E



NOTE: This map is prepared for the use of the Washoe County Assessor for assessment and illustrative purposes only. It does not represent a survey of the premises. No liability is assumed as to the sufficiency or the accuracy of the data delineated hereon.

Office of Washoe County Assessor, Nevada - Robert W. McGowan

This area previously shown on _____ 10 _____
 NOTE:
 ASSESSOR'S BLOCK NUMBERS SHOWN IN ELLIPSES
 ASSESSOR'S PARCEL NUMBERS SHOWN IN CIRCLES

Drawn by	DSR	09/03/97
Revised	DSR 7/7/98	DSR 8/3/98