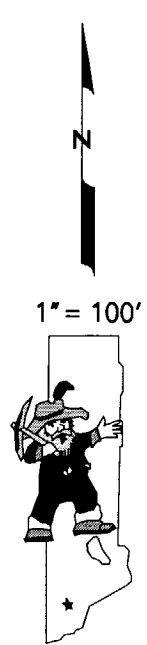
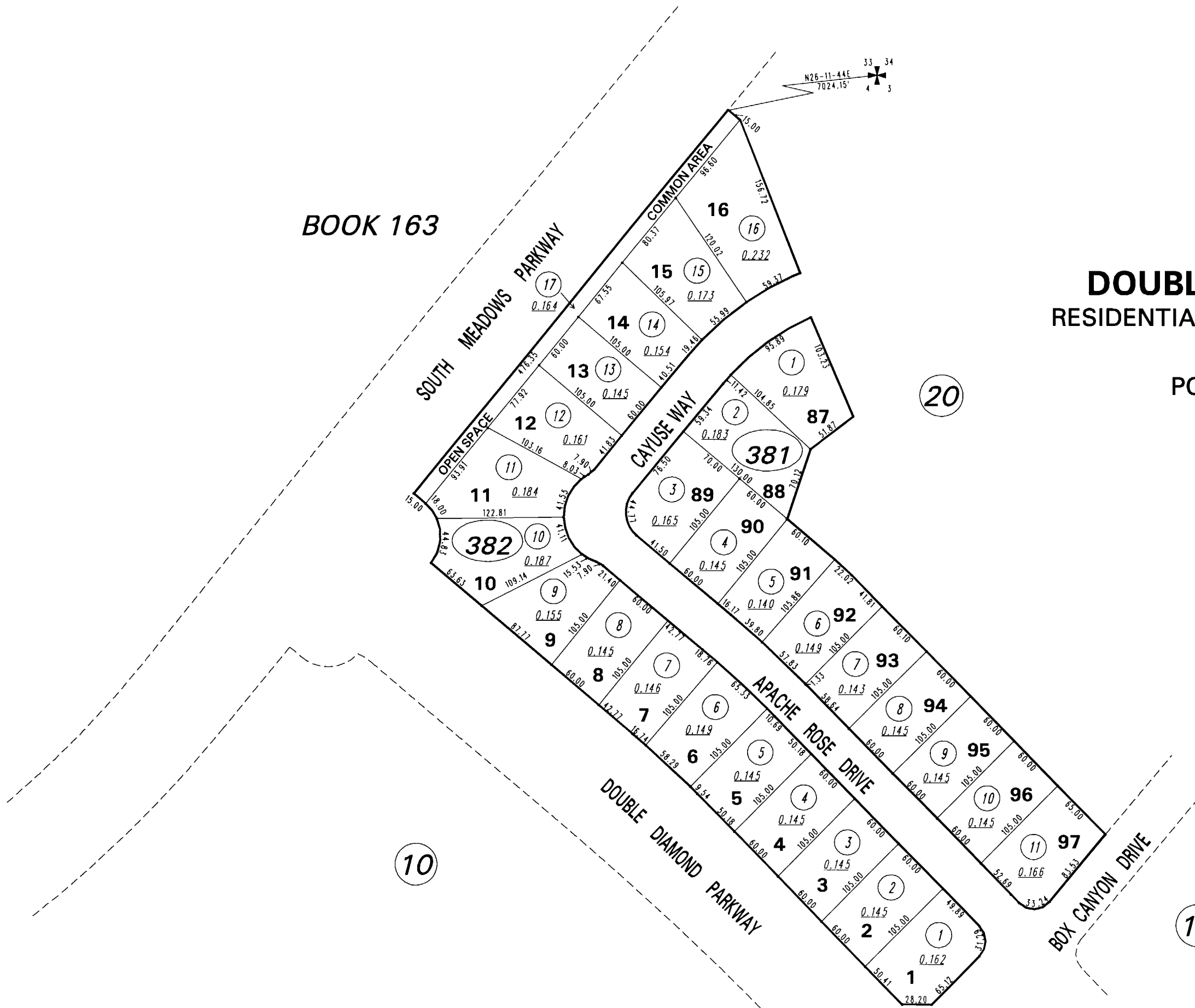
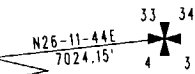


BOOK 163

(3410)
DOUBLE DIAMOND RANCH
RESIDENTIAL DEVELOPMENT VILLAGE 1-C

PORTION SECTION 9
T18N - R20E



NOTE: This map is prepared for the use of the Washoe County Assessor for assessment and illustrative purposes only. It does not represent a survey of the premises. No liability is assumed as to the sufficiency or the accuracy of the data delineated hereon.

Office of Washoe County Assessor, Nevada - Robert W. McGowan

This area previously shown on 160-10
NOTE:
ASSESSOR'S BLOCK NUMBERS SHOWN IN ELLIPSES
ASSESSOR'S PARCEL NUMBERS SHOWN IN CIRCLES

Drawn by DSR 07/25/97
Revised DSR 8/24/98 DSR 10/15/99
CFB 03/09/2006