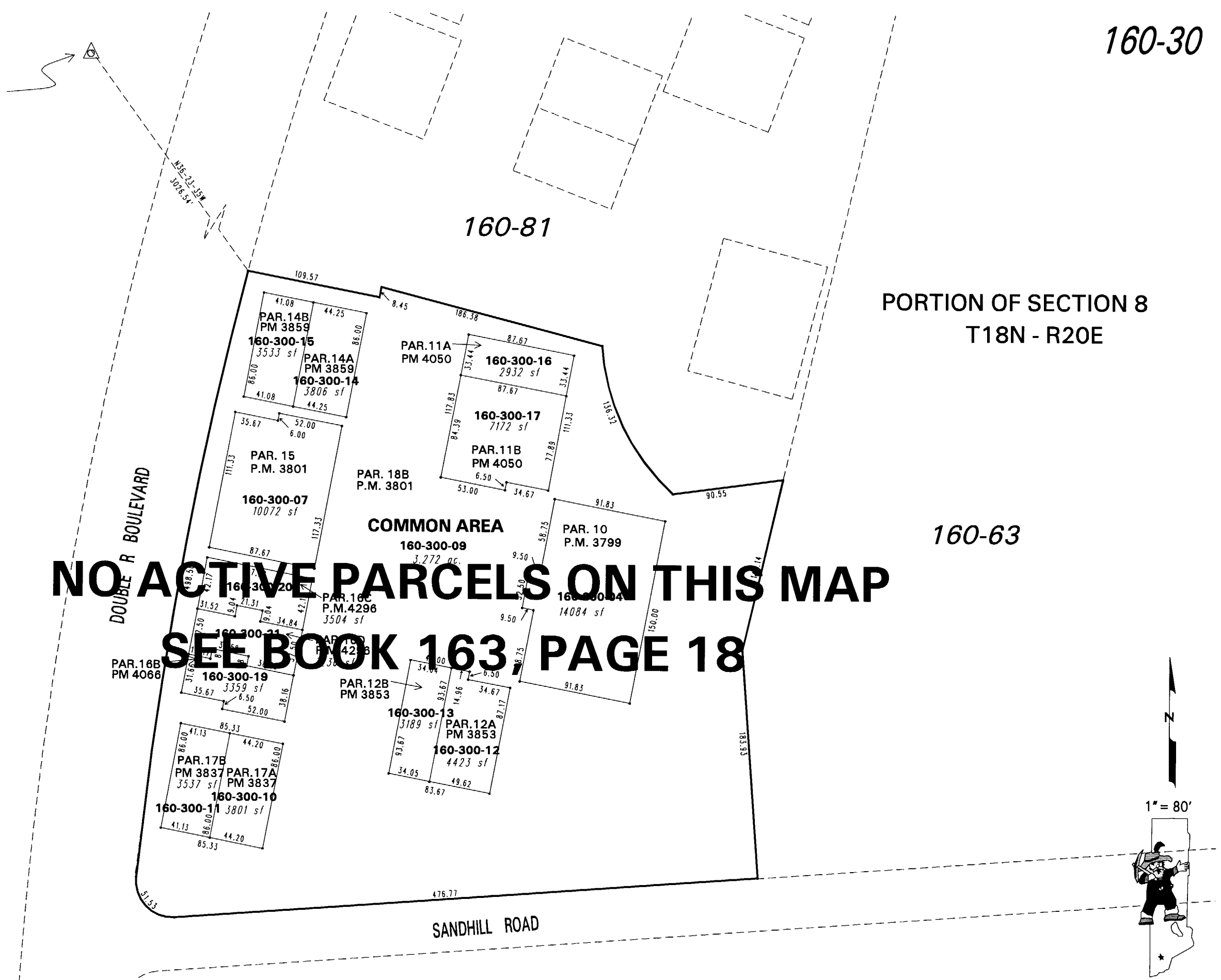


WASHOE COUNTY
GPS MON. #907
N 14,840,817.00
E 2,291,007.44



NOTE: This map is prepared for the use of the Washoe County Assessor for assessment and illustrative purposes only. It does not represent a survey of the premises. No liability is assumed as to the sufficiency or the accuracy of the data delineated hereon.

Office of Washoe County Assessor, Nevada - Robert W. McGowan

This area previously shown on _____ 160-63

NOTE: Areas of parcels which are less than 2 acres are shown in square feet.

Drawn by	HCS 8/24/01
Revised	HCS 8/29/03 CFB 1/3/2005
	CFB 3/8/2006