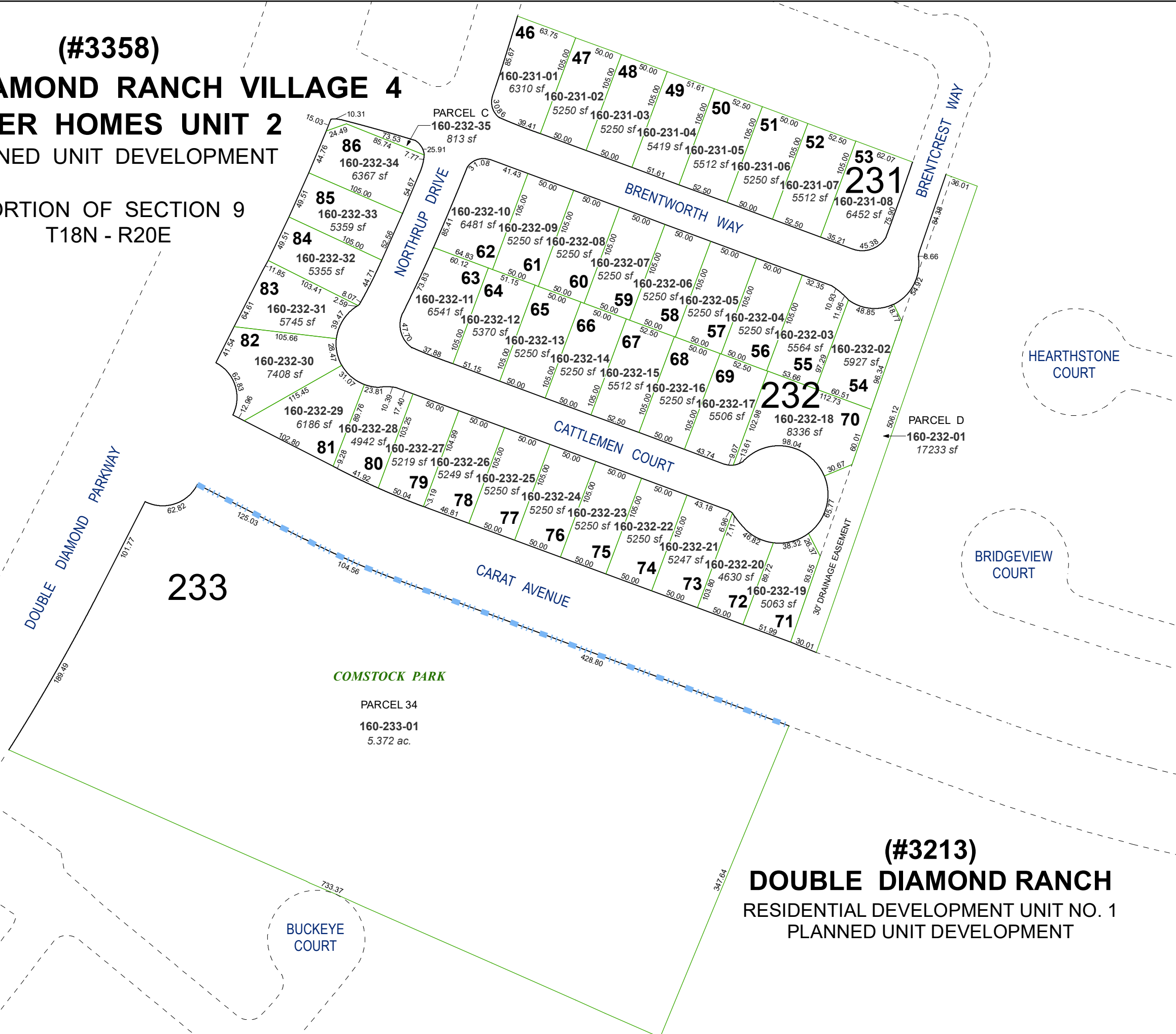


(#3358)
DOUBLE DIAMOND RANCH VILLAGE 4
RYDER HOMES UNIT 2
 PLANNED UNIT DEVELOPMENT

PORTION OF SECTION 9
 T18N - R20E



233

COMSTOCK PARK

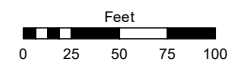
PARCEL 34
 160-233-01
 5.372 ac.

BUCKEYE COURT

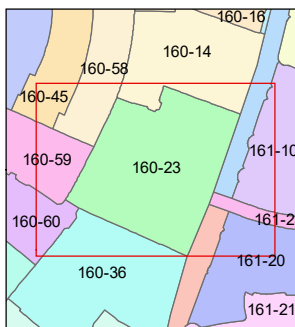
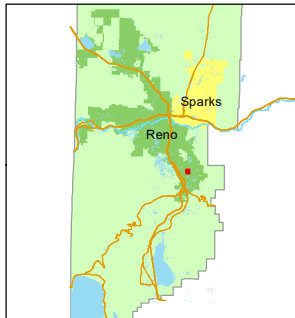
(#3213)
DOUBLE DIAMOND RANCH
 RESIDENTIAL DEVELOPMENT UNIT NO. 1
 PLANNED UNIT DEVELOPMENT

Assessor's Map Number
160-23

STATE OF NEVADA
WASHOE COUNTY
 ASSESSOR'S OFFICE
 1001 East Ninth Street, Building D
 Reno, Nevada 89512
 (775) 328-2231



1 inch = 100 feet



created by: SR 11/26/2019

updated: _____

area previously shown on map(s):
160-10, 022-33

NOTE: This map was prepared for the use of the Washoe County Assessor for assessment and illustrative purposes only. It does not represent a survey of the premises. No liability is assumed as to the sufficiency or accuracy of the data delineated hereon.