

(#3275)

**DOUBLE DIAMOND RANCH**

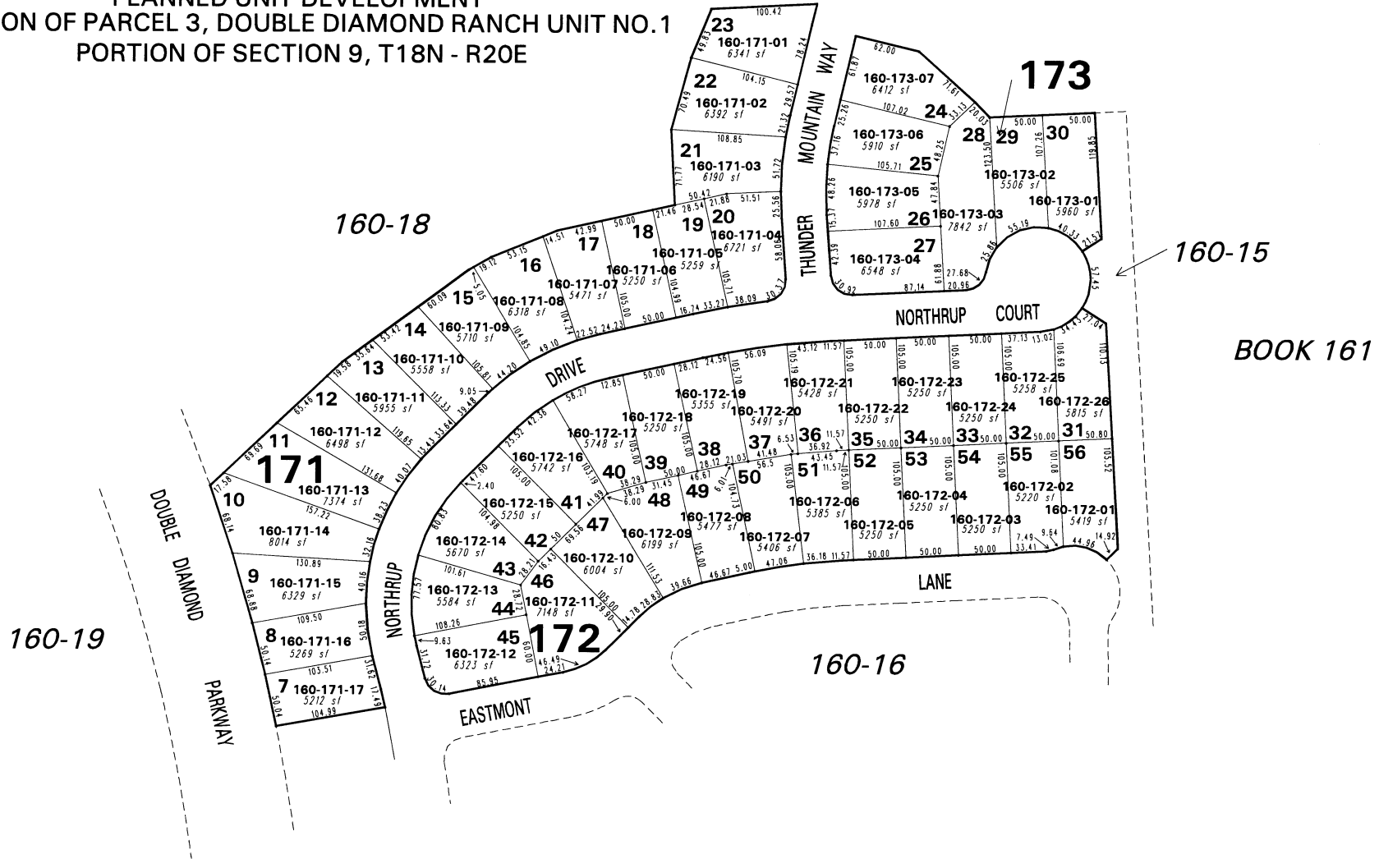
RESIDENTIAL DEVELOPMENT VILLAGE NO.3

PLANNED UNIT DEVELOPMENT

PORTION OF PARCEL 3, DOUBLE DIAMOND RANCH UNIT NO.1

PORTION OF SECTION 9, T18N - R20E

160-41



NOTE: This map is prepared for the use of the Washoe County Assessor for assessment and illustrative purposes only. It does not represent a survey of the premises. No liability is assumed as to the sufficiency or the accuracy of the data delineated hereon.

Office of Washoe County Assessor, Nevada - Robert W. McGowan

NOTE: Streets are parceled on page 160-15

This area previously shown on 22-33

NOTE: Areas of parcels which are less than 2 acres are shown in square feet.

Drawn by CFB 8/6/96  
 Revised 12/96 dsr 7/21/97  
 dsr 8/27/97 DSR 5/7/99 HCS 6/7/01