

(#3275)

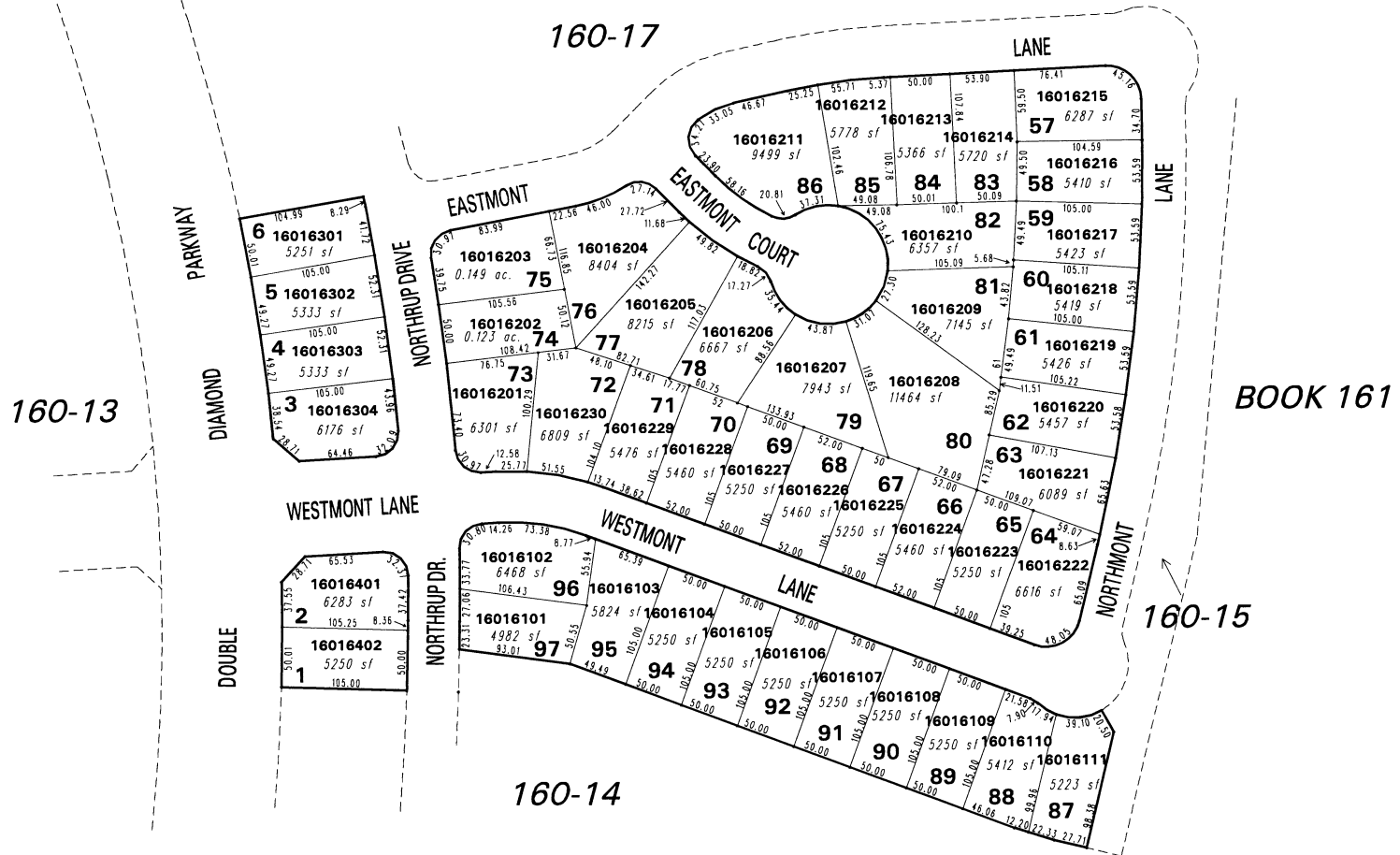
DOUBLE DIAMOND RANCH

RESIDENTIAL DEVELOPMENT VILLAGE NO. 3

PLANNED UNIT DEVELOPMENT

PORTION OF PARCEL 3, DOUBLE DIAMOND RANCH UNIT NO. 1

PORTION OF SECTION 9, T18N - R20E



NOTE: This map is prepared for the use of the Washoe County Assessor for assessment and illustrative purposes only. It does not represent a survey of the premises. No liability is assumed as to the sufficiency or the accuracy of the data delineated hereon.

Office of Washoe County Assessor, Nevada - Robert W. McGowan

NOTE: Streets are parceled on page 160-15
This area previously shown on _____

NOTE: Areas of parcels which are less than 2 acres are shown in square feet.

Drawn by CFR 8/5/96
Revised 4/4/97 dsr 7/21/97 dsr
DSR 10/15/99 DSR 8/14/00 HCS 8/7/01