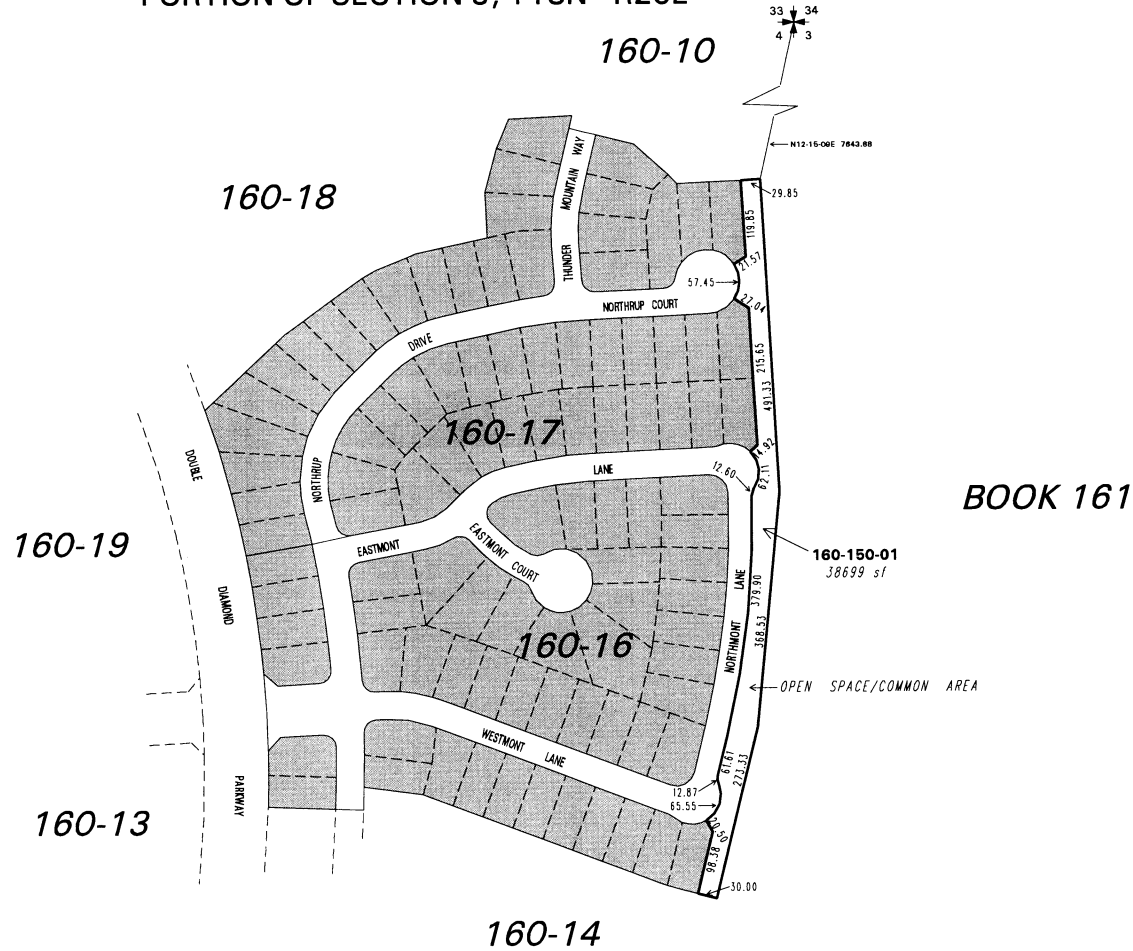


(#3275)
DOUBLE DIAMOND RANCH
 RESIDENTIAL DEVELOPMENT VILLAGE NO. 3
 PLANNED UNIT DEVELOPMENT
 PORTION OF PARCEL 3, DOUBLE DIAMOND RANCH UNIT NO. 1
 PORTION OF SECTION 9, T18N - R20E



NOTE: This map is prepared for the use of the Washoe County Assessor for assessment and illustrative purposes only. It does not represent a survey of the premises. No liability is assumed as to the sufficiency or the accuracy of the data delineated hereon.

Office of Washoe County Assessor, Nevada - Robert W. McGowan

This area previously shown on 22-33

NOTE: Areas of parcels which are less than 2 acres are shown in square feet.

Drawn by	CFB 8/2/96
Revised	12/96 DSR 7/21/97
DSR	1/13/99 HCS 8/7/01