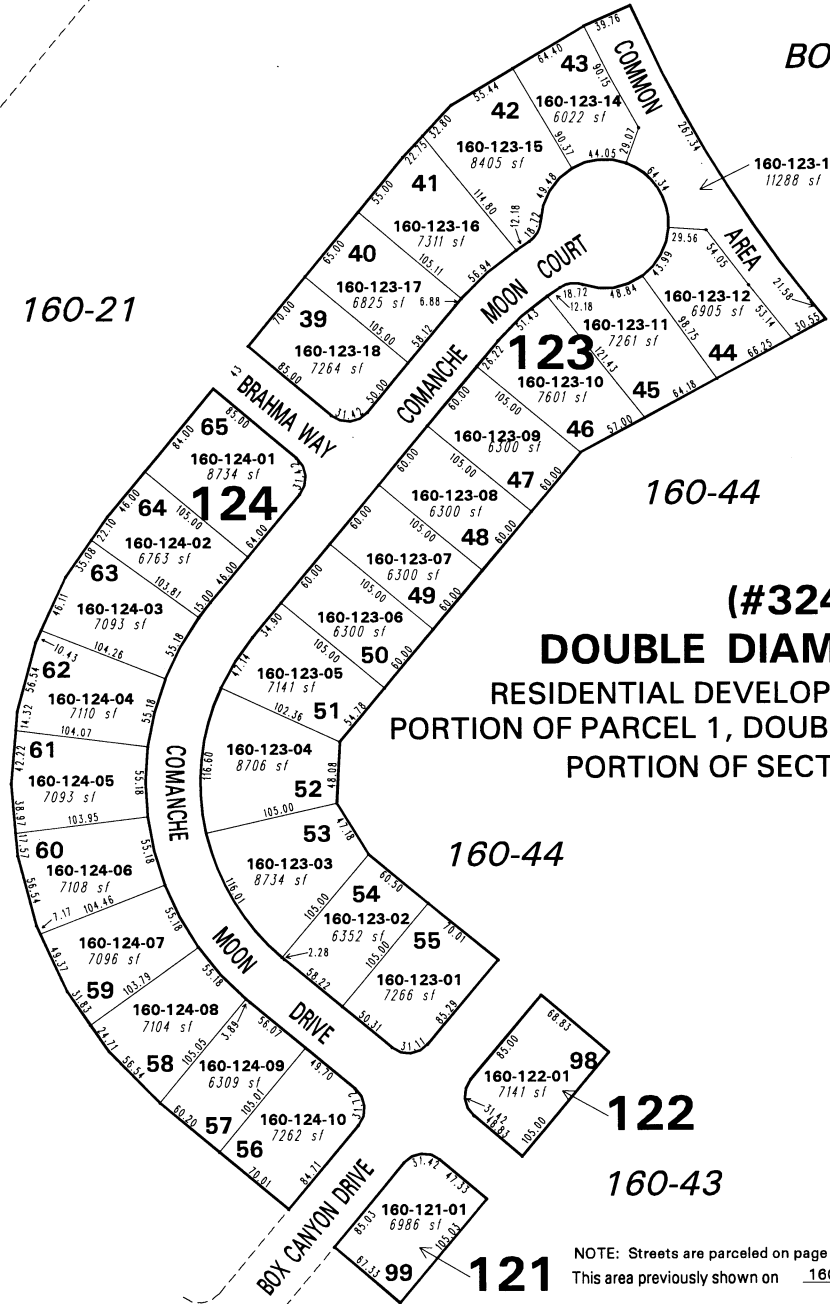


SOUTH MEADOWS PARKWAY

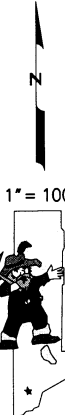
160-21

160-20



(#3246)
DOUBLE DIAMOND RANCH
 RESIDENTIAL DEVELOPMENT VILLAGE NO. 1-A
 PORTION OF PARCEL 1, DOUBLE DIAMOND RANCH UNIT NO. 1
 PORTION OF SECTION 9, T18N - R20E

1" = 100'



NOTE: This map is prepared for the use of the Washoe County Assessor for assessment and illustrative purposes only. It does not represent a survey of the premises. No liability is assumed as to the sufficiency or the accuracy of the data delineated hereon.

Office of Washoe County Assessor, Nevada - Robert W. McGowan

NOTE: Streets are parceled on page 160-10
 This area previously shown on 160-10

NOTE: Areas of parcels which are less than 2 acres are shown in square feet.

Drawn by	CFB 7/29/96
Revised	3/17/97 8/27/97 dsr
DSR	1/1/99 DSR 10/15/99 HCS 6/8/01