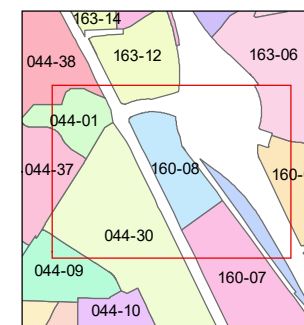
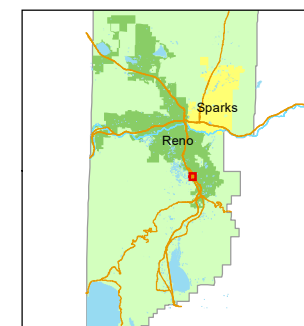


1 inch = 200 feet



created by: CFB 03/25/2011

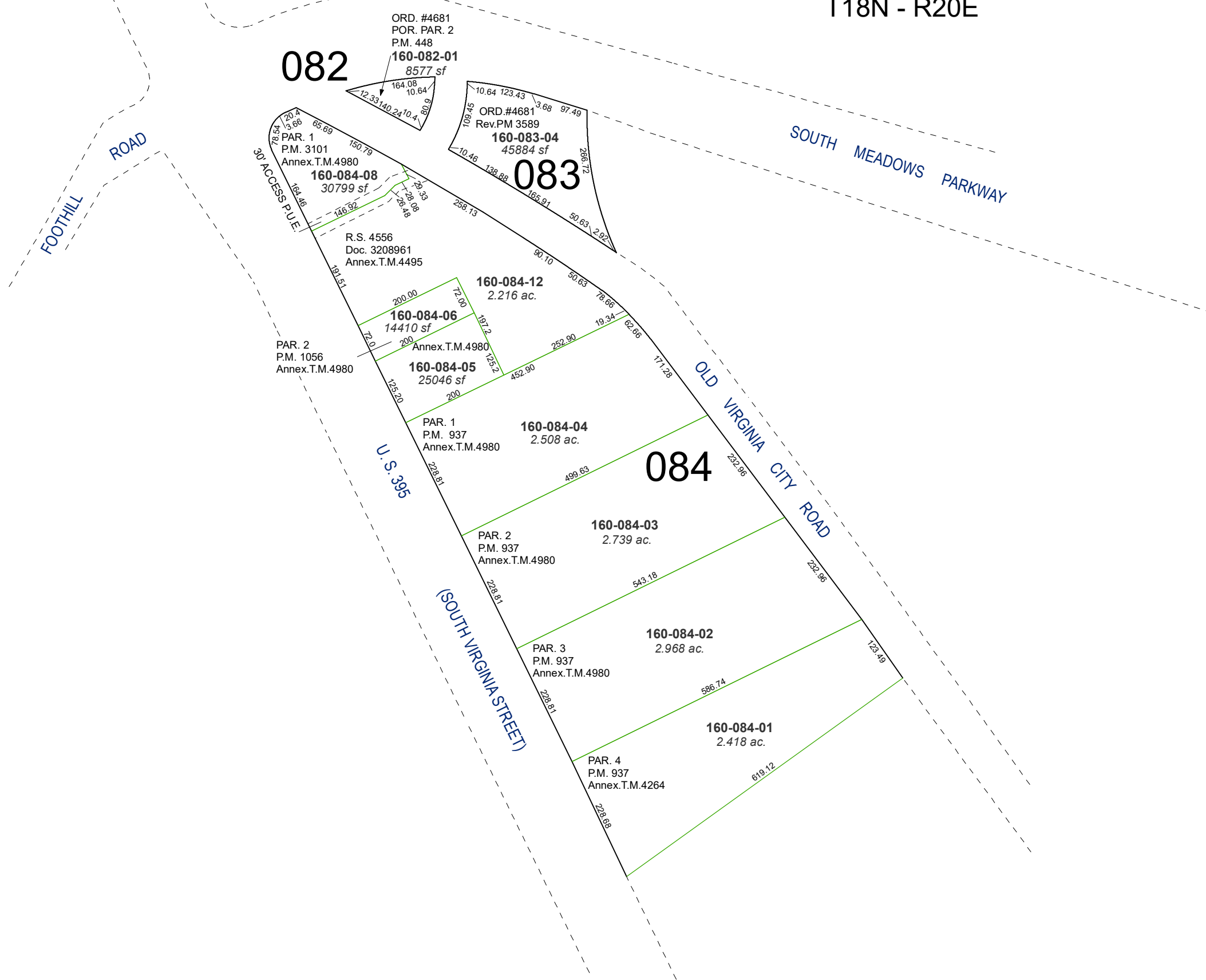
updated: NLH 07/18/11 SR 01/17/20

area previously shown on map(s):

022-25

NOTE: This map was prepared for the use of the Washoe County Assessor for assessment and illustrative purposes only. It does not represent a survey of the premises. No liability is assumed as to the sufficiency or accuracy of the data delineated hereon.

A POR. OF THE SW ¼ OF SEC. 8
T18N - R20E



082

083

084

085

ORD. #4681
POR. PAR. 2
P.M. 448
160-082-01
8577 sf

ORD. #4681
Rev. PM 3589
160-083-04
45884 sf

PAR. 1
P.M. 3101
Annex.T.M.4980
160-084-08
30799 sf

R.S. 4556
Doc. 3208961
Annex.T.M.4495

160-084-12
2.216 ac.

160-084-06
14410 sf

160-084-05
25046 sf

PAR. 2
P.M. 1056
Annex.T.M.4980

PAR. 1
P.M. 937
Annex.T.M.4980
160-084-04
2.508 ac.

160-084-03
2.739 ac.

PAR. 3
P.M. 937
Annex.T.M.4980
160-084-02
2.968 ac.

160-084-01
2.418 ac.

PAR. 4
P.M. 937
Annex.T.M.4264

FOOTHILL ROAD

SOUTH MEADOWS PARKWAY

OLD VIRGINIA CITY ROAD

U.S. 395
(SOUTH VIRGINIA STREET)

30' ACCESS P.U.E.