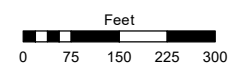
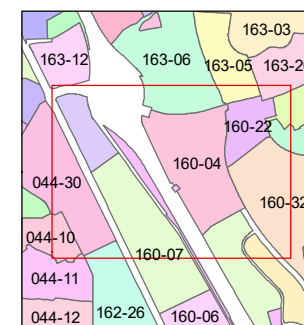
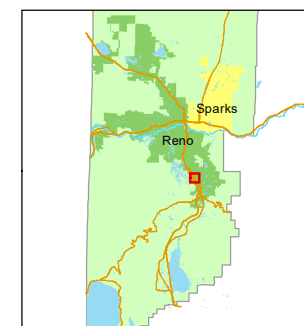


STATE OF NEVADA  
**WASHOE COUNTY**  
**ASSESSOR'S OFFICE**

1001 East Ninth Street, Building D  
Reno, Nevada 89512  
(775) 328-2231



1 inch = 300 feet



created by: CFB 03/28/2013

updated: JMO 08/10/16 SR 11/14/16

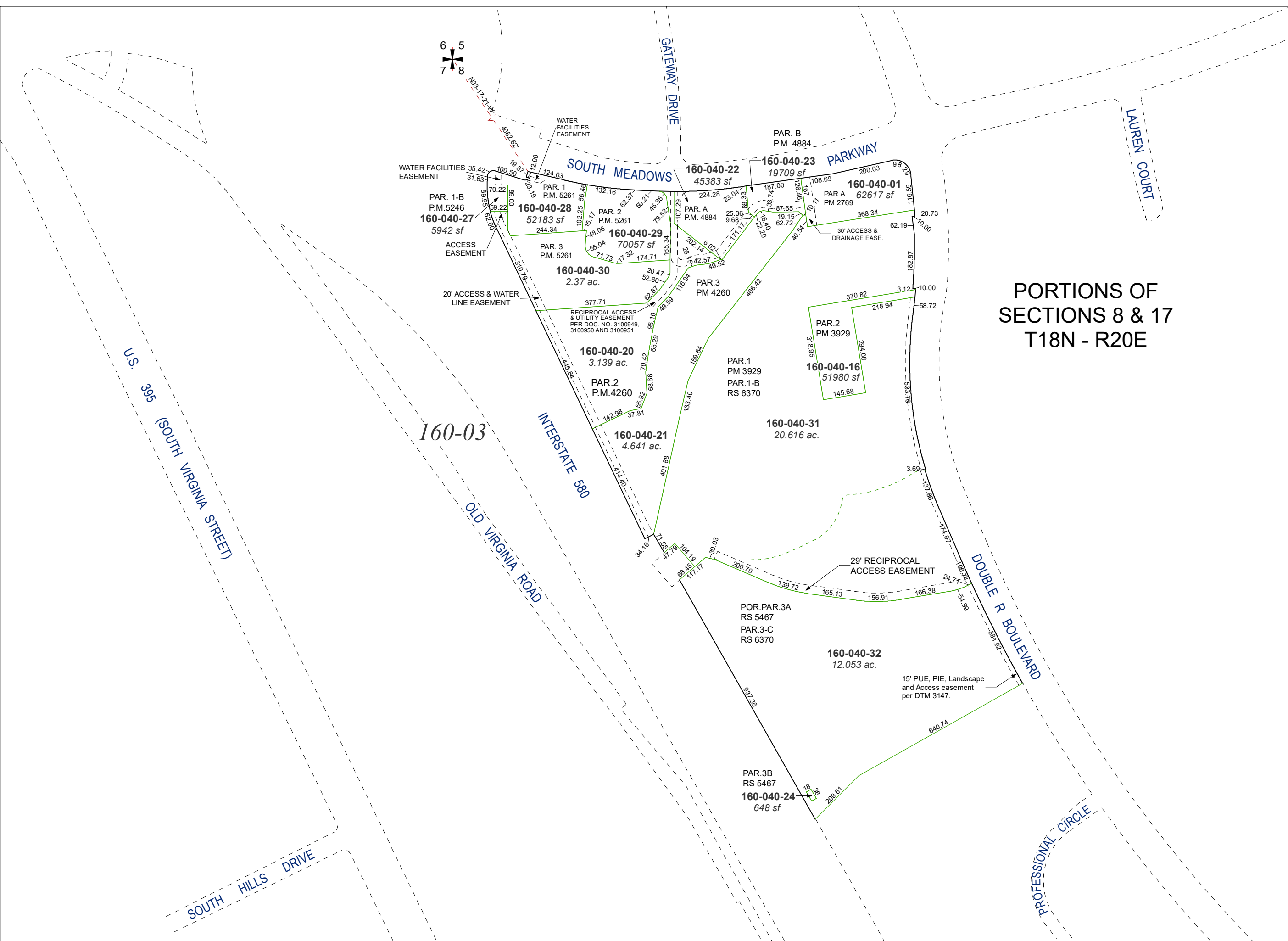
SR 05/19/22

area previously shown on map(s):

022-31

NOTE: This map was prepared for the use of the Washoe County Assessor for assessment and illustrative purposes only. It does not represent a survey of the premises. No liability is assumed as to the sufficiency or accuracy of the data delineated hereon.

**PORTIONS OF SECTIONS 8 & 17  
T18N - R20E**



U.S. 395 (SOUTH VIRGINIA STREET)

SOUTH HILLS DRIVE

160-03

OLD VIRGINIA ROAD

INTERSTATE 580

GATEWAY DRIVE

SOUTH MEADOWS

PARKWAY

LAUREN COURT

DOUBLE R BOULEVARD

PROFESSIONAL CIRCLE

Parcel details including: PAR. 1-B P.M. 5246 160-04-27 5942 sf; PAR. 1 P.M. 5261 160-04-28 52183 sf; PAR. 2 P.M. 5261 160-04-29 70057 sf; PAR. 3 P.M. 5261 160-04-30 2.37 ac.; PAR. 1 P.M. 4884 160-04-22 45383 sf; PAR. B P.M. 4884 160-04-23 19709 sf; PAR. A P.M. 2769 160-04-01 62617 sf; PAR. 2 P.M. 4260 160-04-20 3.139 ac.; PAR. 2 P.M. 4260 160-04-16 51980 sf; PAR. 1 P.M. 3929 160-04-31 20.616 ac.; POR.PAR.3A RS 5467 PAR.3-C RS 6370 160-04-32 12.053 ac.; PAR.3B RS 5467 160-04-24 648 sf.