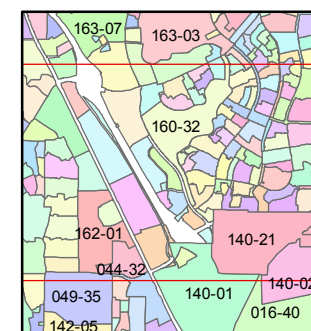
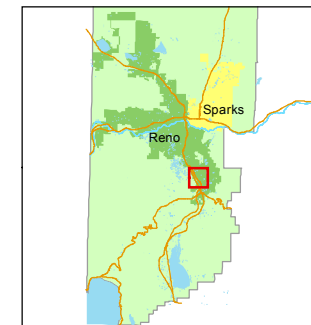


1 inch = 800 feet



created by: NLH 11/09/2011

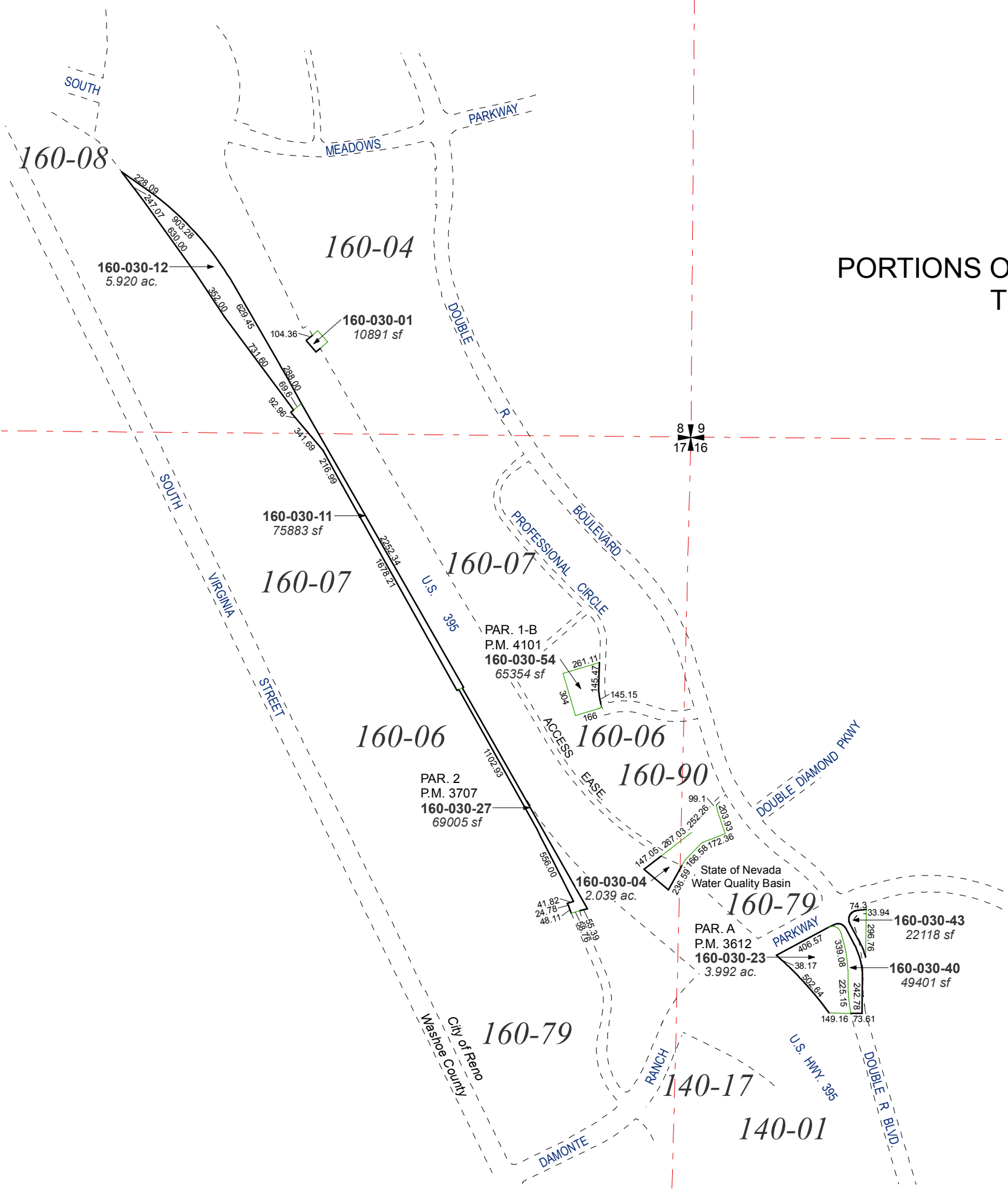
last updated: CFB 02/03/2014

area previously shown on map(s)

022-30

NOTE: This map was prepared for the use of the Washoe County Assessor for assessment and illustrative purposes only. It does not represent a survey of the premises. No liability is assumed as to the sufficiency or accuracy of the data delineated hereon.

**PORTIONS OF SECTIONS 8,16 & 17
T18N - R20E**



7 8
18 17

8 9
17 16

9 10
16 15

18 17
19 20

17 16
20 21

16 15
21 22