

(#5249) COLINA ROSA SUBDIVISION

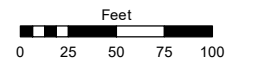
PORTION OF THE SW ¼ OF SEC. 30
T18N - R20E

Assessor's Map Number

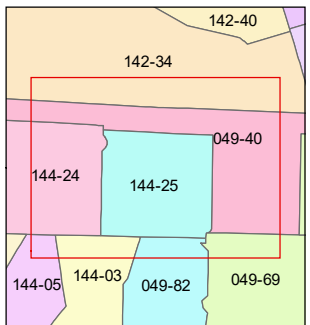
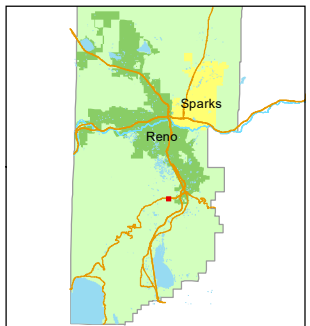
144-25

STATE OF NEVADA
WASHOE COUNTY
ASSESSOR'S OFFICE

1001 East Ninth Street, Building D
Reno, Nevada 89512
(775) 328-2231



1 inch = 100 feet



created by: JKF 2/6/2018

updated: JKF 1/18/22

area previously shown on map(s):
049-40

NOTE: This map was prepared for the use of the Washoe County Assessor for assessment and illustrative purposes only. It does not represent a survey of the premises. No liability is assumed as to the sufficiency or accuracy of the data delineated hereon.

MOUNT ROSE HIGHWAY
(STATE ROUTE 431)

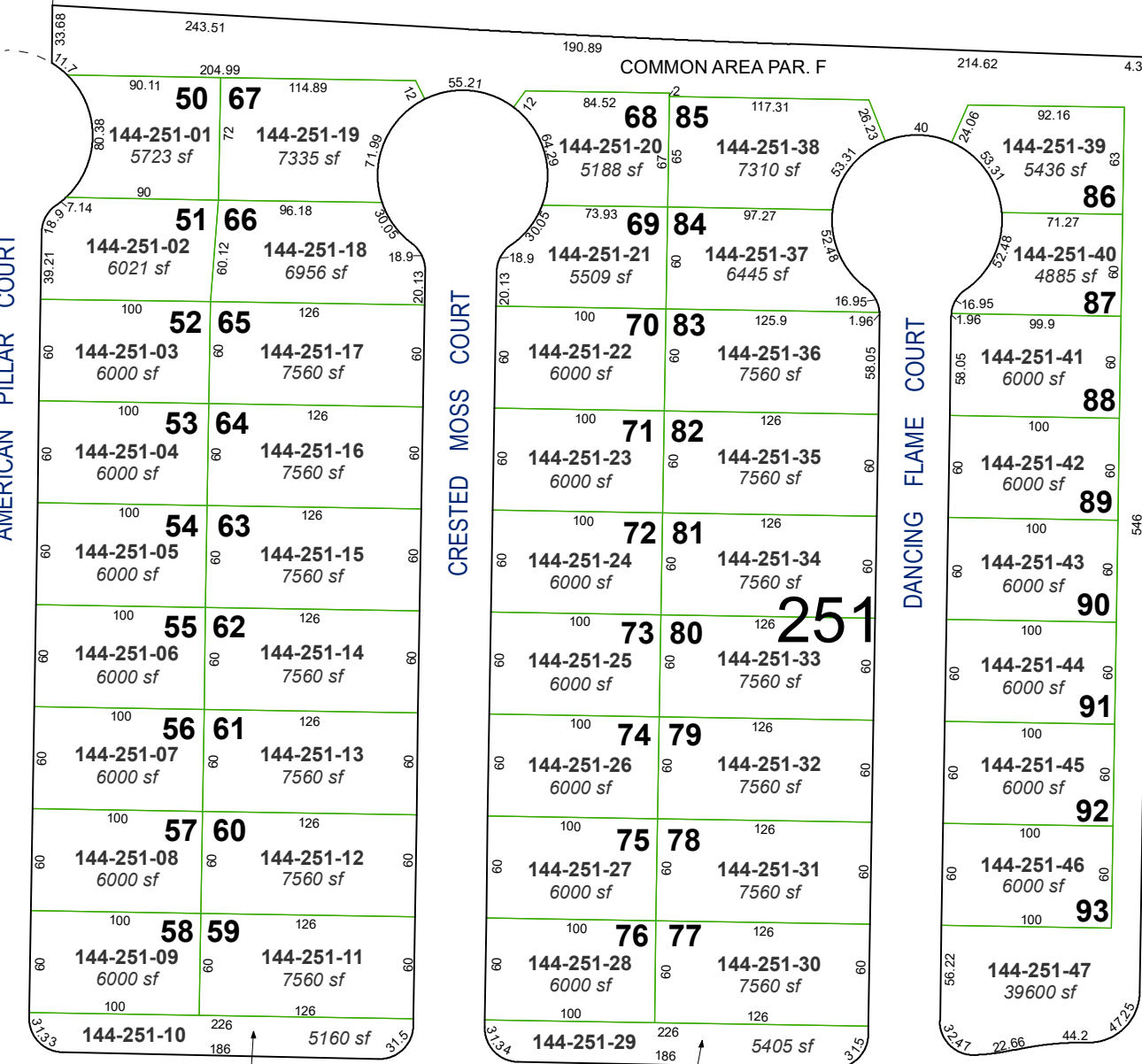
GLOWING AMBER COURT

AMERICAN PILLAR COURT

CRESTED MOSS COURT

DANCING FLAME COURT

EDMONTON DRIVE



BUTCH CASSIDY DRIVE
COMMON AREA PAR. D
COMMON AREA PAR. E