

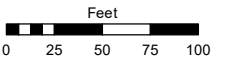
(#5249)
COLINA ROSA SUBDIVISION
 PORTION OF THE SW ¼ OF SEC. 30
 T18N - R20E

Assessor's Map Number

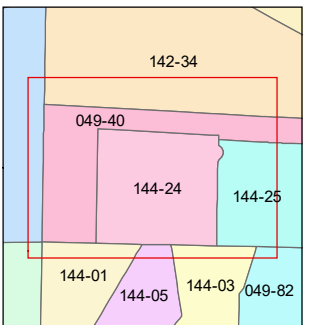
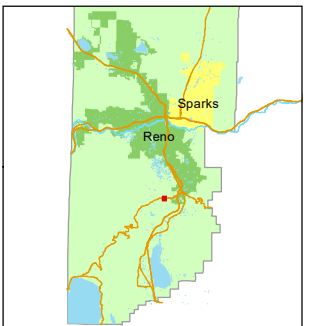
144-24

STATE OF NEVADA
WASHOE COUNTY
 ASSESSOR'S OFFICE

1001 East Ninth Street, Building D
 Reno, Nevada 89512
 (775) 328-2231



1 inch = 100 feet



created by: JKF 2/6/2018

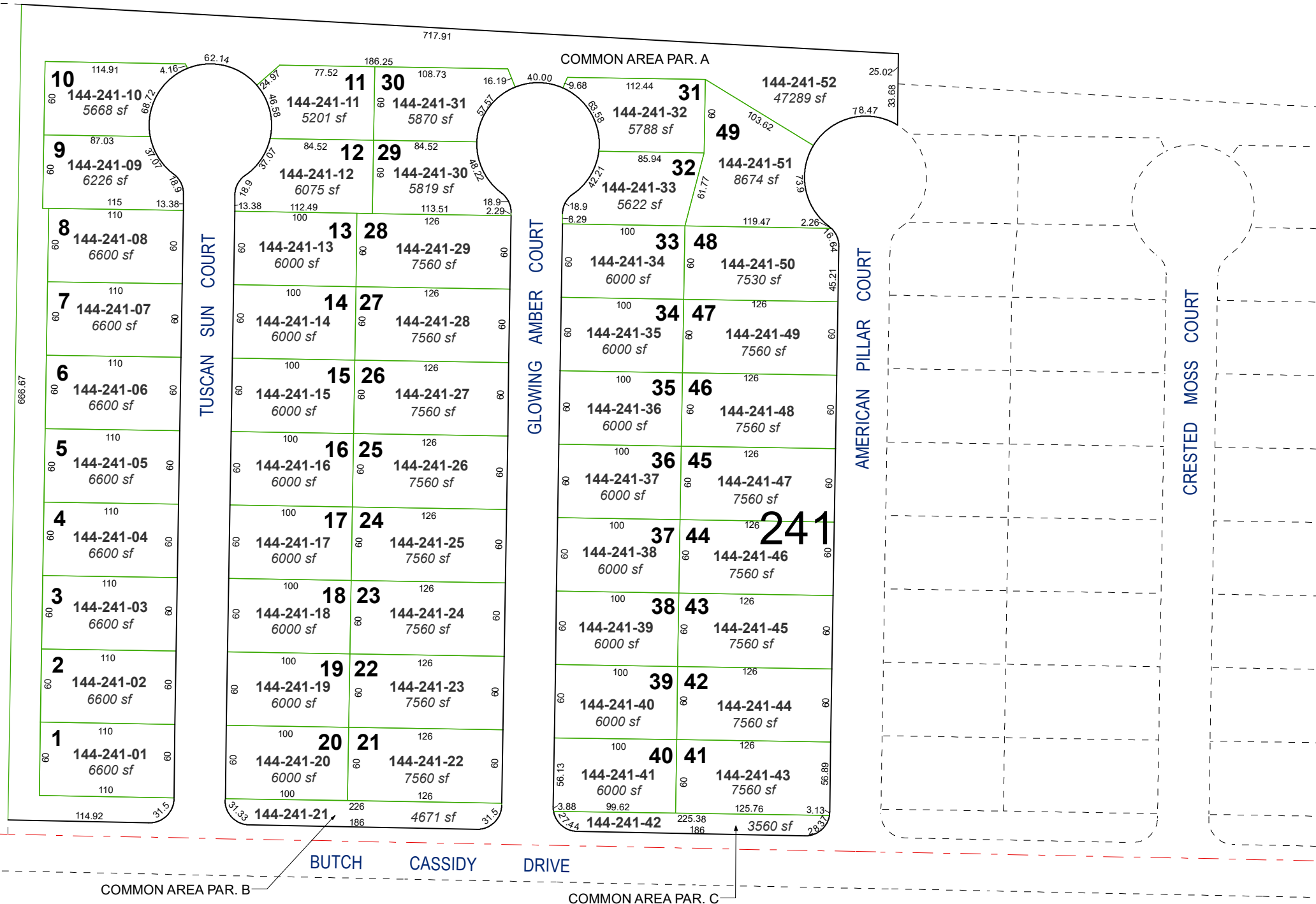
updated: JKF 1/18/22

area previously shown on map(s):
049-40

NOTE: This map was prepared for the use of the Washoe County Assessor for assessment and illustrative purposes only. It does not represent a survey of the premises. No liability is assumed as to the sufficiency or accuracy of the data delineated hereon.

MOUNT ROSE HIGHWAY

(STATE ROUTE 431)



25 30
36 31

S 88-50-26 E
319.87