

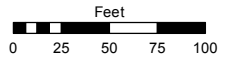
PORTIONS OF THE S 1/2 OF SEC. 30
AND OF THE NE 1/4 OF SEC. 31
T18N - R20E

Assessor's Map Number

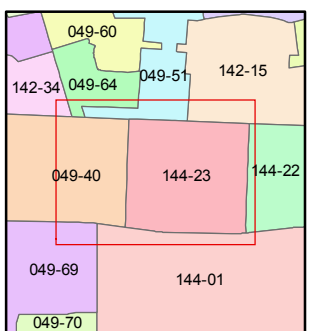
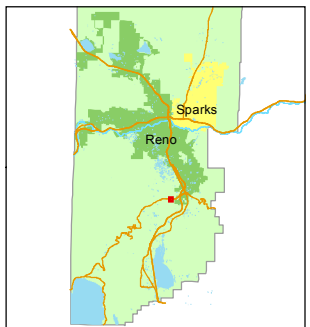
144-23

STATE OF NEVADA
WASHOE COUNTY
ASSESSOR'S OFFICE
Michael E. Clark, Assessor

1001 East Ninth Street
Building D
Reno, Nevada 89512
(775) 328-2231



1 inch = 100 feet



created by: EMG 10/24/2014

last updated: JKF 1/4/18 JKF 1/8/18

area previously shown on map(s)

049-44, 049-40

NOTE: This map was prepared for the use of the Washoe County Assessor for assessment and illustrative purposes only. It does not represent a survey of the premises. No liability is assumed as to the sufficiency or accuracy of the data delineated hereon.

MOUNT ROSE HIGHWAY

(STATE ROUTE 431)

TELLURIDE DR.

WAY

BARGARY

KYLE COURT

BUTCH

CASSIDY

DRIVE

POR. PAR. B
P.M. 1624
PAR. 1
R.S. 5899

POR. PAR. B
P.M. 1624

PAR. A
REV. T.M. 5247
PAR. 2
R.S. 5899

PAR. 1
REV.P.M. 5137

144-232-13
5.60 ac.

232

144-232-14
5.50 ac.

144-231-25
2.48 ac.

231

PAR. 1
P.M. 4037
POR. PAR. 3
P.M. 4036
144-231-20
13737 sf

144-231-19
13461 sf

PAR. 2
P.M. 4037
144-231-18
14571 sf

PAR. G
P.M. 1332

144-231-04
54076 sf

PAR. 2
P.M. 4036
144-231-13
13333 sf

PAR. 3
P.M. 4037
144-231-17
16381 sf

20' ACCESS & PUE

PAR. 1
P.M. 4036
144-231-14
13314 sf

LOT 3
R.S. 3535
144-231-10
13916 sf

PAR. 1
P.M. 3692
144-231-08
16117 sf

PAR. 2
P.M. 3692
144-231-07
14620 sf

PAR. 3
P.M. 3692
144-231-06
14592 sf

PAR. 4A
R.S. 4250
144-231-05
19272 sf

PAR. A
R.S. 4646
144-231-22
13319 sf

LOT 4
R.S. 3535
144-231-09
13275 sf

PAR. 1
P.M. 3692
144-231-08
16117 sf

PAR. 2
P.M. 3692
144-231-07
14620 sf

PAR. 3
P.M. 3692
144-231-06
14592 sf

PAR. 4A
R.S. 4250
144-231-05
19272 sf