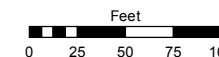
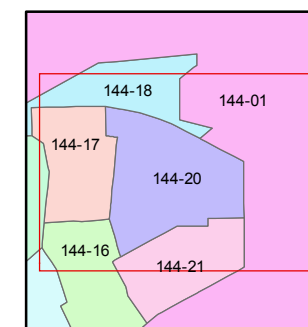
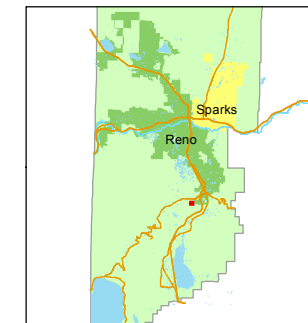


STATE OF NEVADA  
**WASHOE COUNTY**  
ASSESSOR'S OFFICE  
Michael E. Clark, Assessor

1001 East Ninth Street  
Building D  
Reno, Nevada 89512  
(775) 328-2231



1 inch = 100 feet



created by: JKF 03/13/2017

last updated: \_\_\_\_\_

area previously shown on map(s)

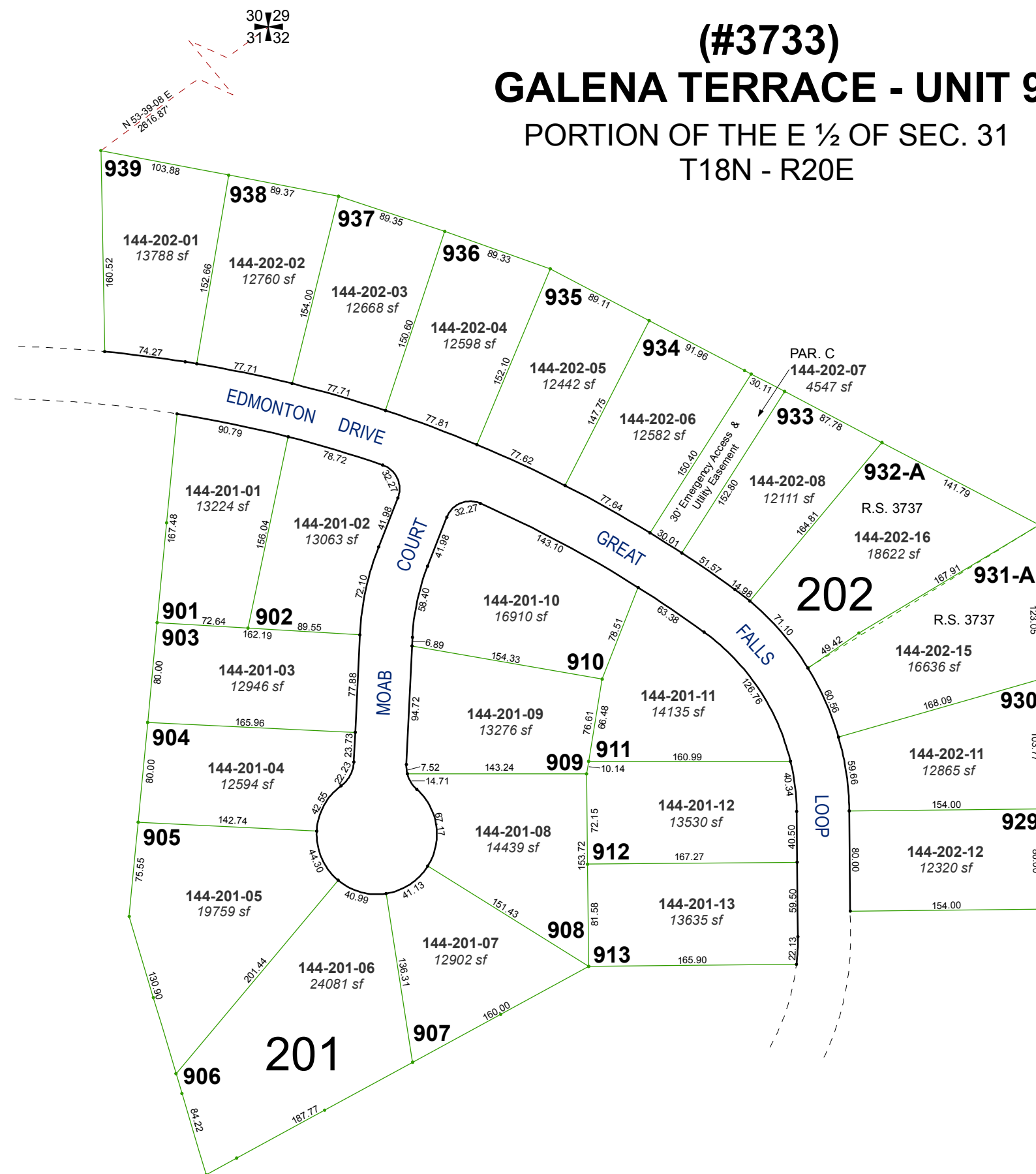
144-01

NOTE: This map was prepared for the use of the Washoe County Assessor for assessment and illustrative purposes only. It does not represent a survey of the premises. No liability is assumed as to the sufficiency or accuracy of the data delineated hereon.

**(#3733)**

# GALENA TERRACE - UNIT 9

PORTION OF THE E 1/2 OF SEC. 31  
T18N - R20E



**201**

**202**