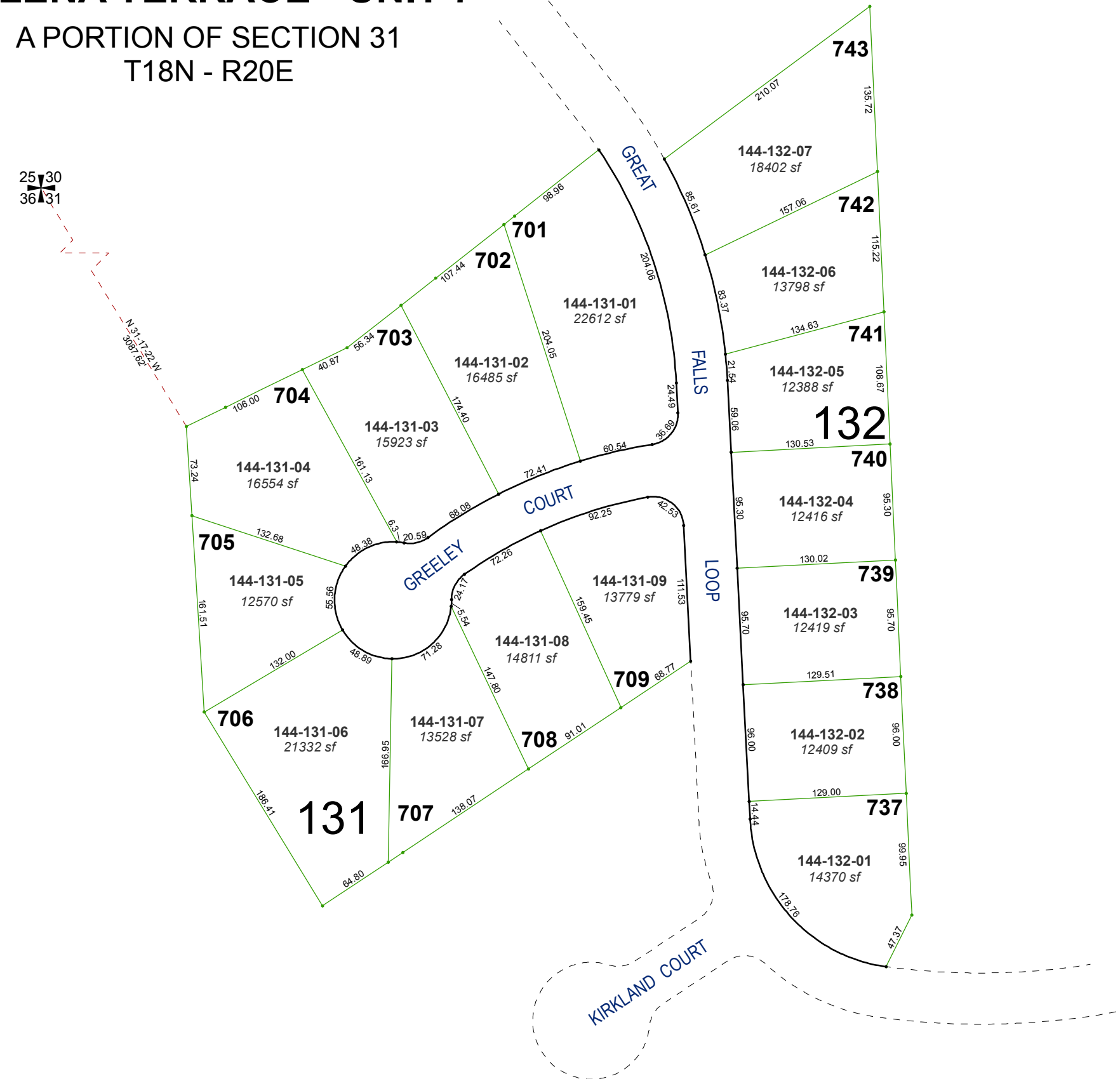


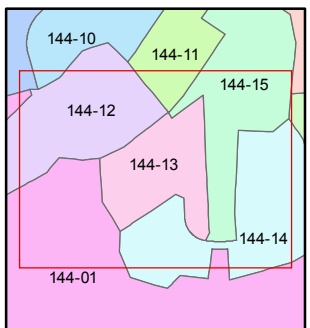
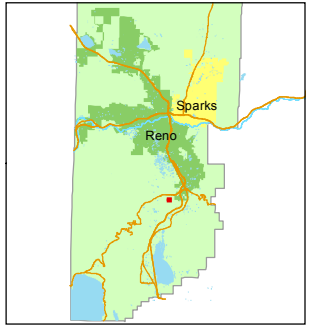
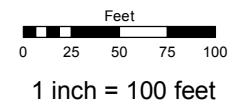
**(#3482)**  
**GALENA TERRACE - UNIT 7**  
 A PORTION OF SECTION 31  
 T18N - R20E



Assessor's Map Number  
**144-13**

STATE OF NEVADA  
**WASHOE COUNTY**  
 ASSESSOR'S OFFICE  
 Michael E. Clark, Assessor

1001 East Ninth Street  
 Building D  
 Reno, Nevada 89512  
 (775) 328-2231



created by: JKF 03/13/2017

last updated: \_\_\_\_\_

area previously shown on map(s)  
144-01

NOTE: This map was prepared for the use of the Washoe County Assessor for assessment and illustrative purposes only. It does not represent a survey of the premises. No liability is assumed as to the sufficiency or accuracy of the data delineated hereon.