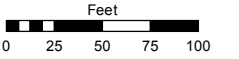
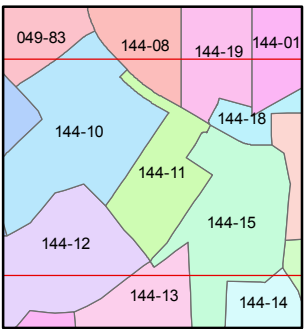
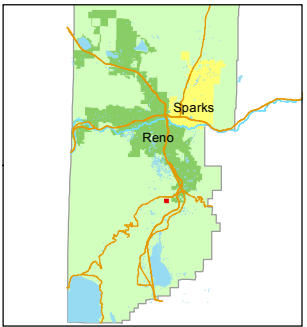


STATE OF NEVADA  
**WASHOE COUNTY**  
**ASSESSOR'S OFFICE**  
Michael E. Clark, Assessor

1001 East Ninth Street  
Building D  
Reno, Nevada 89512  
(775) 328-2231



1 inch = 100 feet



created by: JKF 03/13/2017

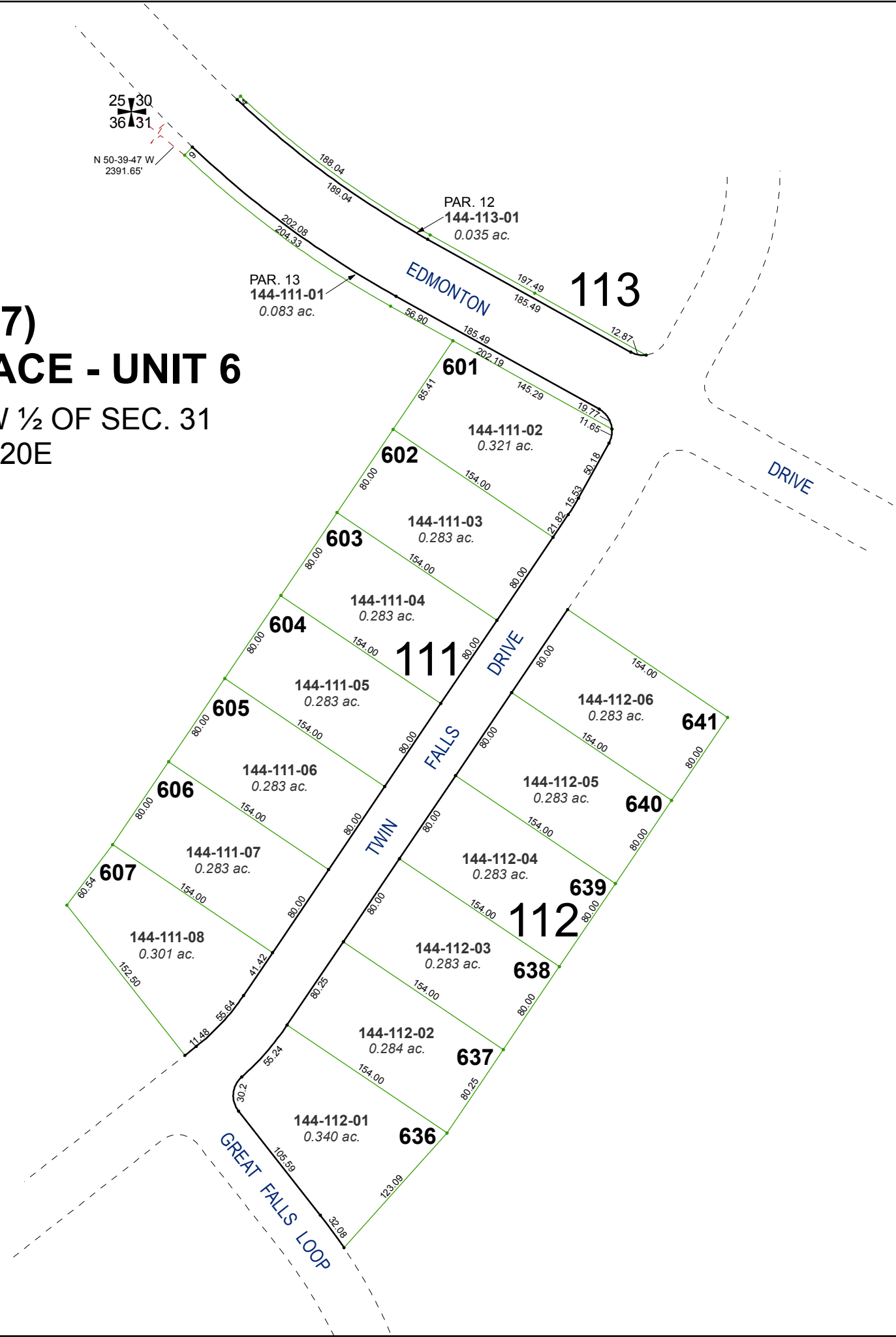
last updated: \_\_\_\_\_

area previously shown on map(s)

144-01

NOTE: This map was prepared for the use of the Washoe County Assessor for assessment and illustrative purposes only. It does not represent a survey of the premises. No liability is assumed as to the sufficiency or accuracy of the data delineated hereon.

**(#3397)**  
**GALENA TERRACE - UNIT 6**  
PORTION OF THE W 1/2 OF SEC. 31  
T18N - R20E



257.30  
361.31  
N 50-39-47 W  
2391.65'

PAR. 12  
144-113-01  
0.035 ac.

PAR. 13  
144-111-01  
0.083 ac.

**113**

EDMONTON

DRIVE

**111**

FALLS DRIVE

TWIN

**112**

GREAT FALLS LOOP