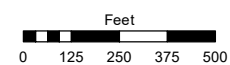
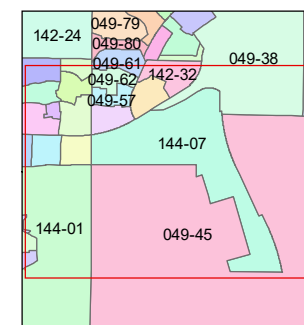
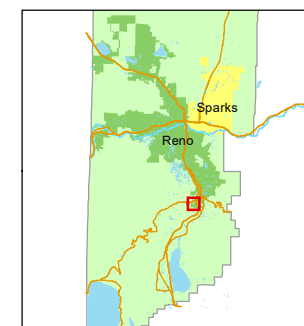


STATE OF NEVADA
WASHOE COUNTY
ASSESSOR'S OFFICE

1001 East Ninth Street, Building D
Reno, Nevada 89512
(775) 328-2231



1 inch = 500 feet



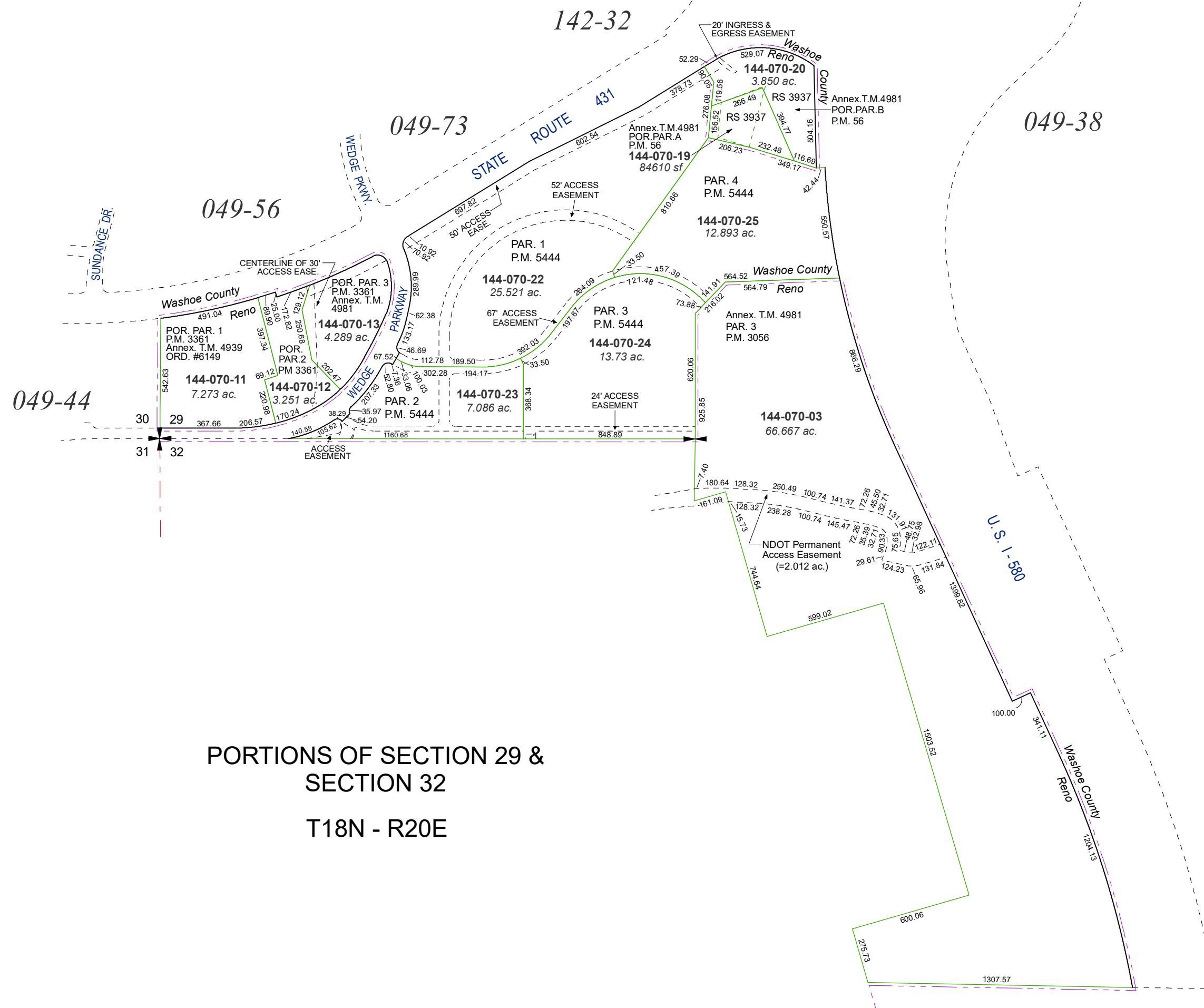
created by: KSB 7/9/2010

updated: NLH 7/19/11 CFB 9/10/15

JKF 1/8/20 JKF 9/23/21

area previously shown on map(s):

NOTE: This map was prepared for the use of the Washoe County Assessor for assessment and illustrative purposes only. It does not represent a survey of the premises. No liability is assumed as to the sufficiency or accuracy of the data delineated hereon.



PORTIONS OF SECTION 29 &
SECTION 32
T18N - R20E