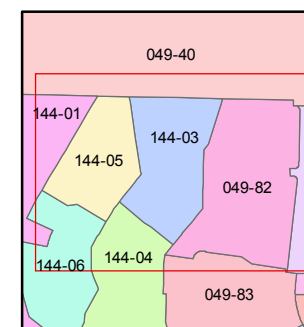
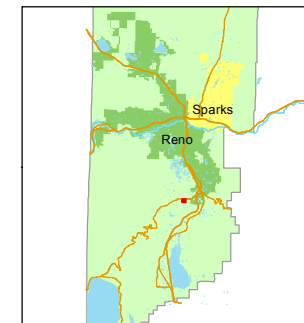


STATE OF NEVADA
WASHOE COUNTY
ASSESSOR'S OFFICE
Michael E. Clark, Assessor

1001 East Ninth Street
Building D
Reno, Nevada 89512
(775) 328-2231



1 inch = 100 feet



created by: JKF 03/10/2017

last updated: _____

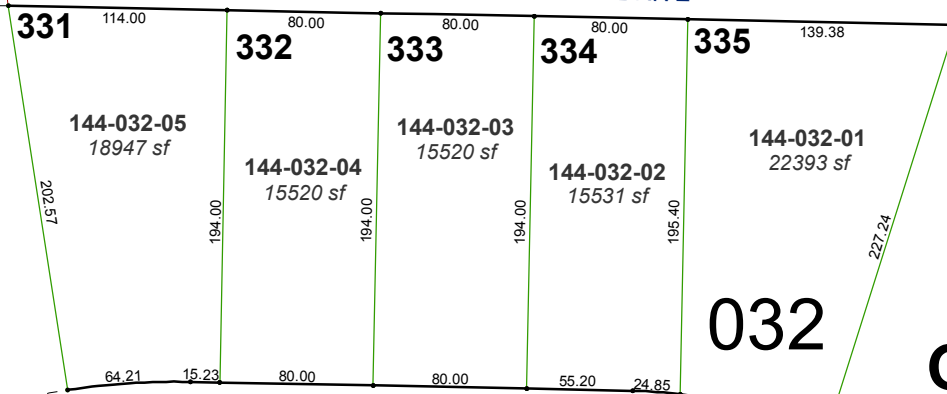
area previously shown on map(s)

49-45

NOTE: This map was prepared for the use of the Washoe County Assessor for assessment and illustrative purposes only. It does not represent a survey of the premises. No liability is assumed as to the sufficiency or accuracy of the data delineated hereon.

25 30
36 31
S 88-50-26 E
763.35'

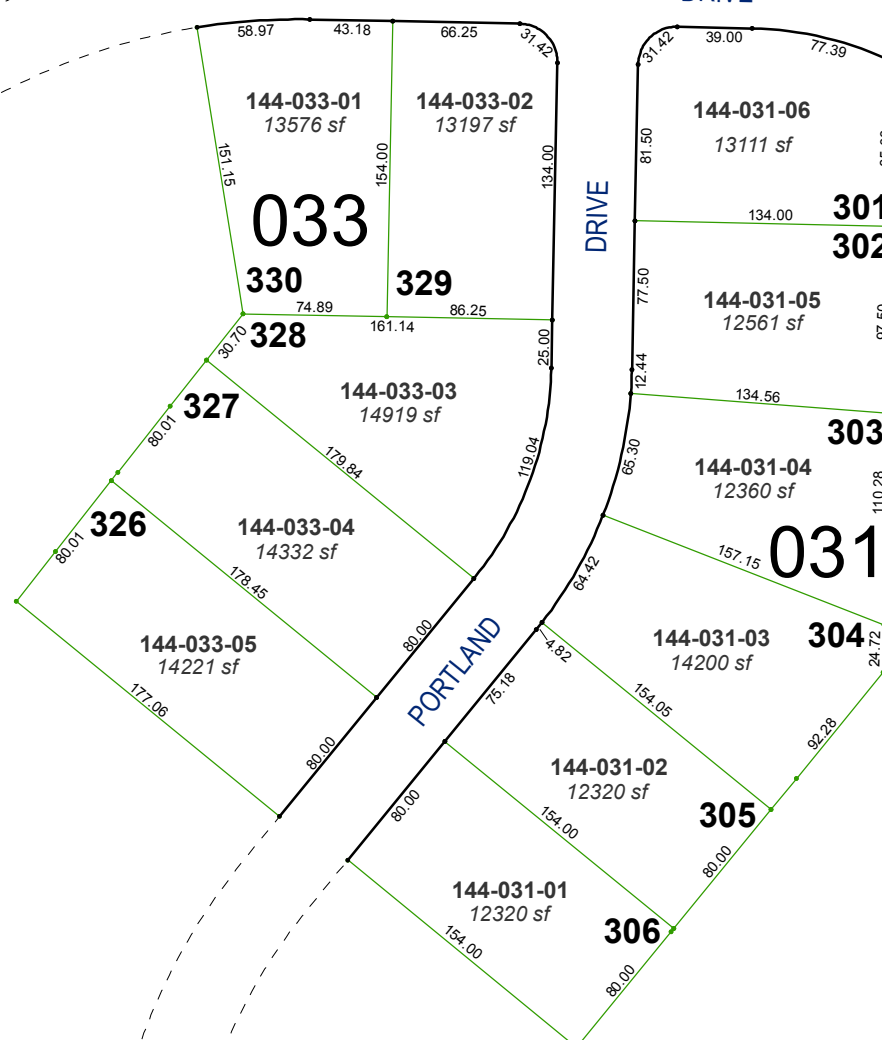
BUTCH CASSIDY DRIVE



032

(#3231)
GALENA TERRACE - UNIT 3
PORTION OF THE NW 1/4 OF SEC. 31
T18N - R20E

VANCOUVER DRIVE



DRIVE

PORTLAND DRIVE