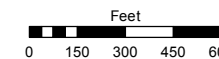
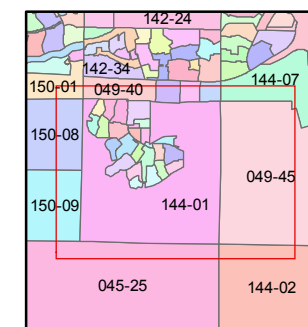
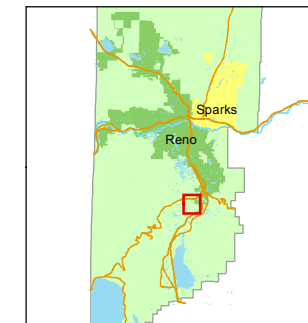


STATE OF NEVADA
WASHOE COUNTY
ASSESSOR'S OFFICE
Michael E. Clark, Assessor

1001 East Ninth Street
Building D
Reno, Nevada 89512
(775) 328-2231



1 inch = 600 feet



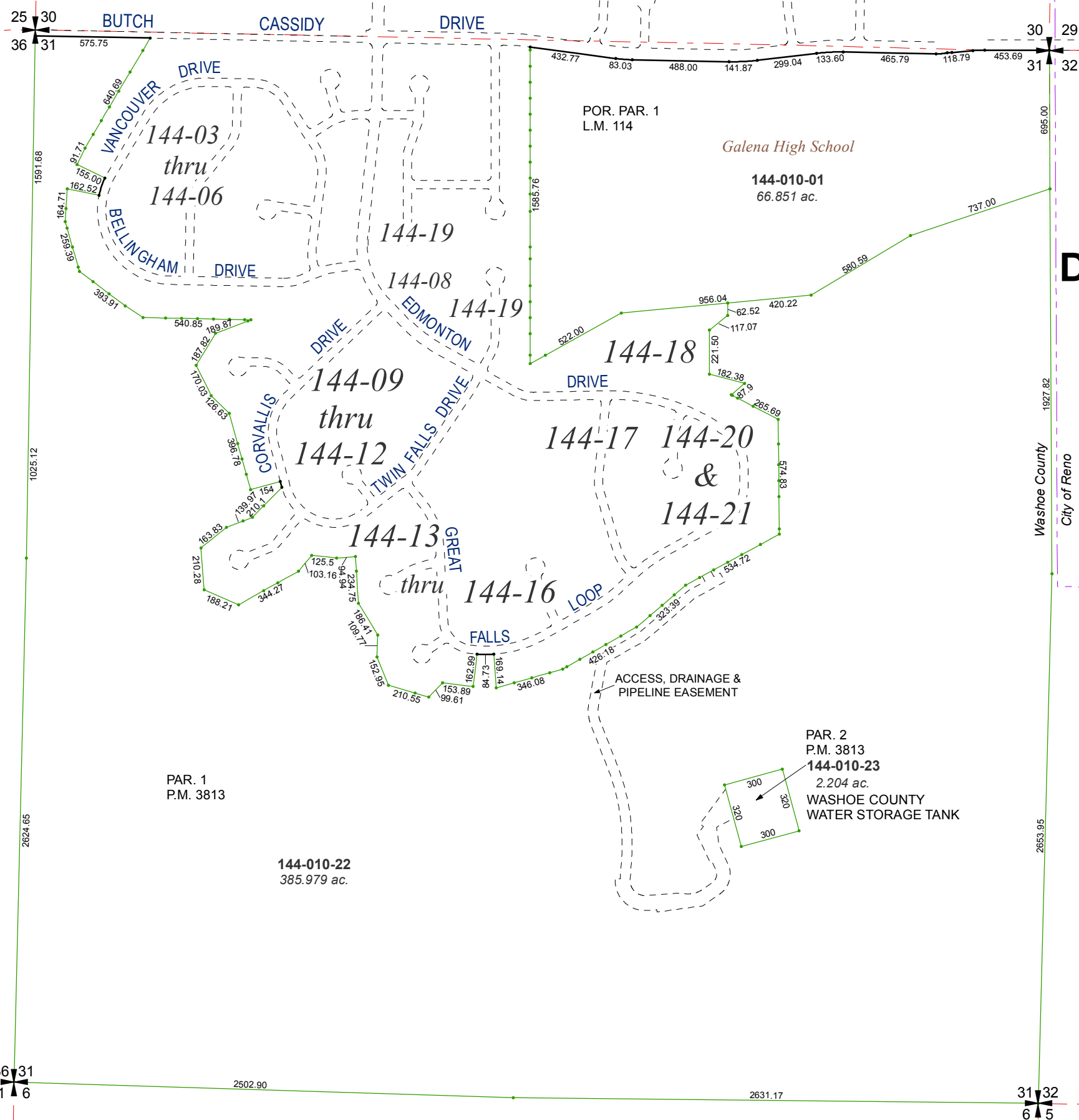
created by: JKF 03/14/2017

last updated: _____

area previously shown on map(s)

49-25

NOTE: This map was prepared for the use of the Washoe County Assessor for assessment and illustrative purposes only. It does not represent a survey of the premises. No liability is assumed as to the sufficiency or accuracy of the data delineated hereon.



DIVISION OF LAND MAP 114

A PORTION OF SECTION 31
T18N - R20E