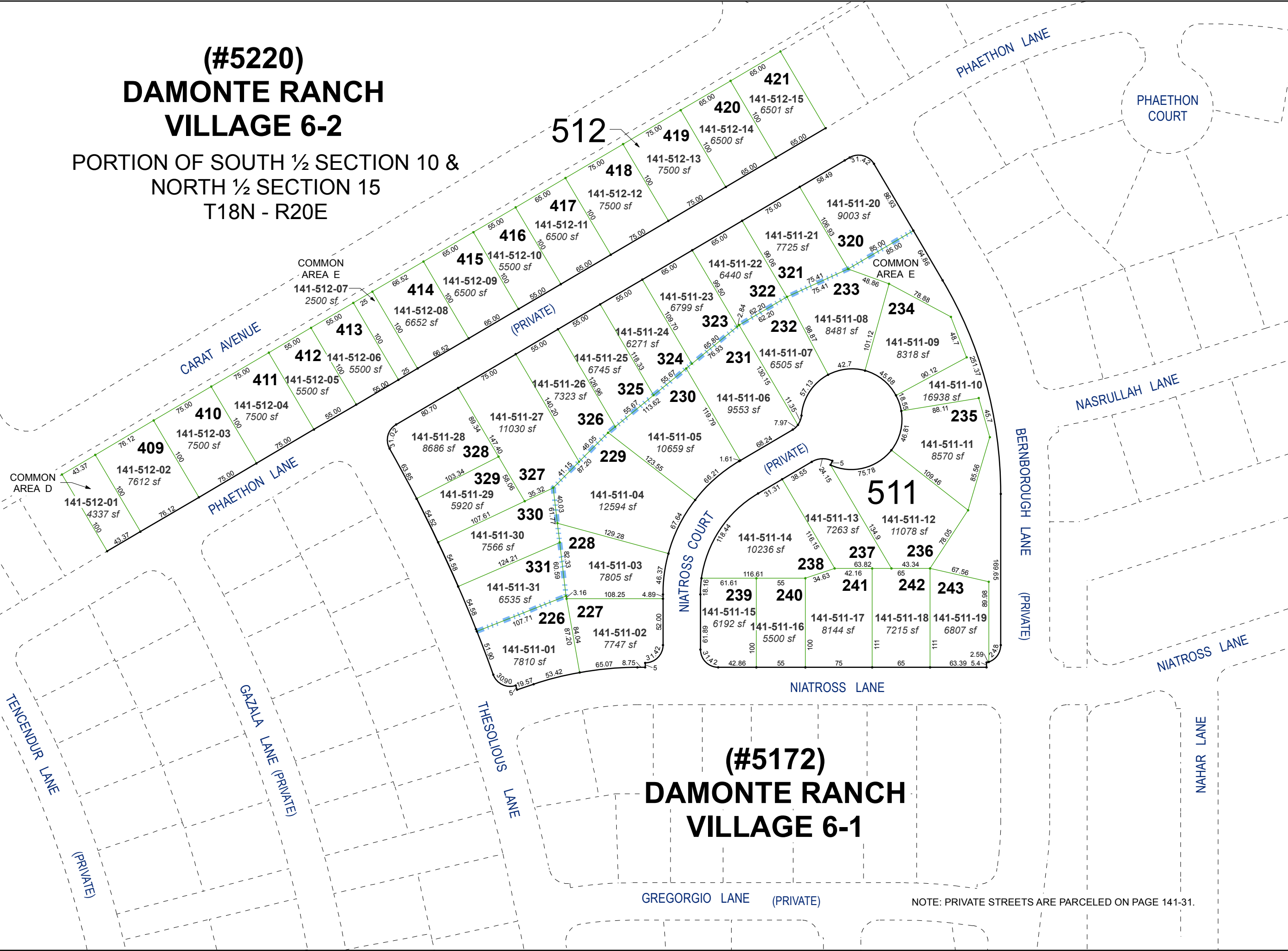


**(#5220)  
DAMONTE RANCH  
VILLAGE 6-2**

PORTION OF SOUTH 1/2 SECTION 10 &  
NORTH 1/2 SECTION 15  
T18N - R20E

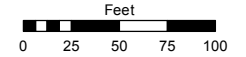


**(#5172)  
DAMONTE RANCH  
VILLAGE 6-1**

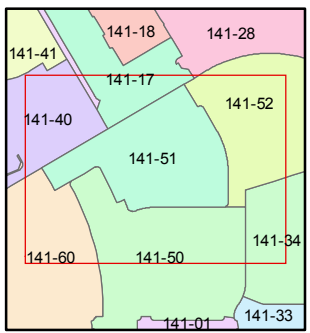
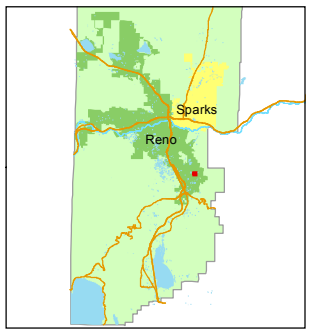
Assessor's Map Number  
**141-51**

STATE OF NEVADA  
**WASHOE COUNTY**  
ASSESSOR'S OFFICE  
Michael E. Clark, Assessor

1001 East Ninth Street  
Building D  
Reno, Nevada 89512  
(775) 328-2231



1 inch = 100 feet



created by: EMG 08/19/2016

last updated: SR 8/17/17

area previously shown on map(s)  
141-01

NOTE: This map was prepared for the use of the Washoe County Assessor for assessment and illustrative purposes only. It does not represent a survey of the premises. No liability is assumed as to the sufficiency or accuracy of the data delineated hereon.

NOTE: PRIVATE STREETS ARE PARCELED ON PAGE 141-31.