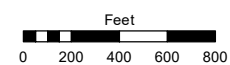
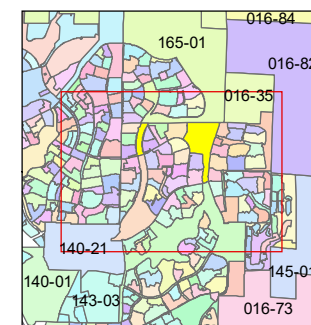
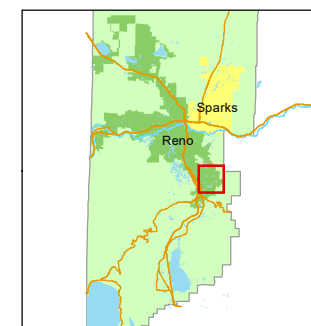


STATE OF NEVADA
WASHOE COUNTY
ASSESSOR'S OFFICE

1001 East Ninth Street, Building D
Reno, Nevada 89512
(775) 328-2231



1 inch = 800 feet



created by: NLH 06/18/2009

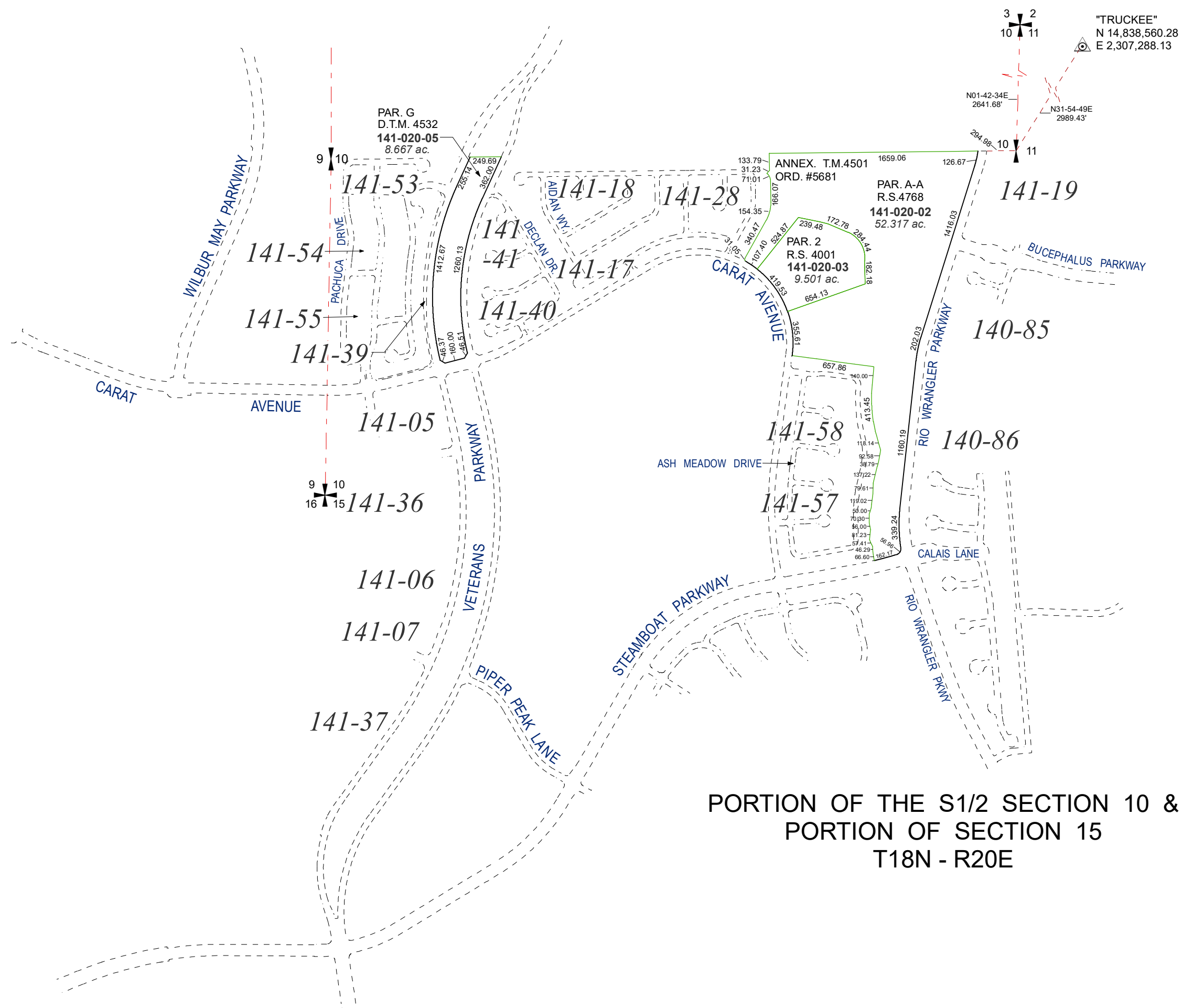
updated: SR 12/19/16 SR 9/26/18

SR 10/18/19

area previously shown on map(s):

140-04

NOTE: This map was prepared for the use of the Washoe County Assessor for assessment and illustrative purposes only. It does not represent a survey of the premises. No liability is assumed as to the sufficiency or accuracy of the data delineated hereon.



**PORTION OF THE S1/2 SECTION 10 &
PORTION OF SECTION 15
T18N - R20E**