

PORTION OF SECTION 10
T16N - R18E

GOLFERS PASS ROAD

129-32

129-301-01
0.182 ac.

129-301-02
0.183 ac.

129-301-03
0.183 ac.

301
129-301-04
0.183 ac.

129-301-05
0.183 ac.

129-301-06
0.183 ac.

129-301-07
0.183 ac.

129-301-08
0.183 ac.

BOULEVARD

VILLAGE

14TH GREEN DRIVE

COLLEGE DRIVE

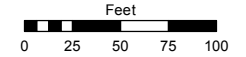
MCDONALD DRIVE

Assessor's Map Number

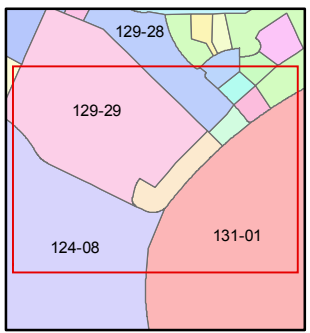
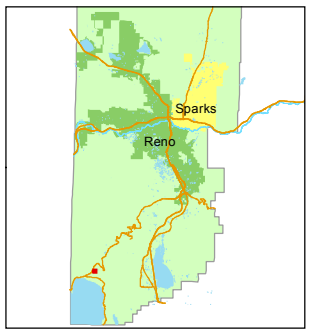
129-30

STATE OF NEVADA
WASHOE COUNTY
ASSESSOR'S OFFICE
Michael E. Clark, Assessor

1001 East Ninth Street
Building D
Reno, Nevada 89512
(775) 328-2231



1 inch = 100 feet



created by: EMG 7/13/2016

last updated: _____

area previously shown on map(s)

129-28

NOTE: This map was prepared for the use of the Washoe County Assessor for assessment and illustrative purposes only. It does not represent a survey of the premises. No liability is assumed as to the sufficiency or accuracy of the data delineated hereon.