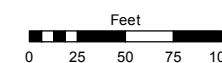


Assessor's Map Number

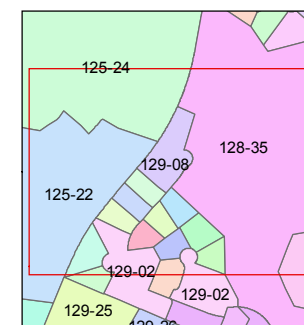
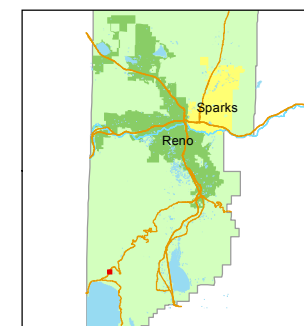
129-08

STATE OF NEVADA
WASHOE COUNTY
ASSESSOR'S OFFICE

1001 East Ninth Street, Building D
Reno, Nevada 89512
(775) 328-2231



1 inch = 100 feet



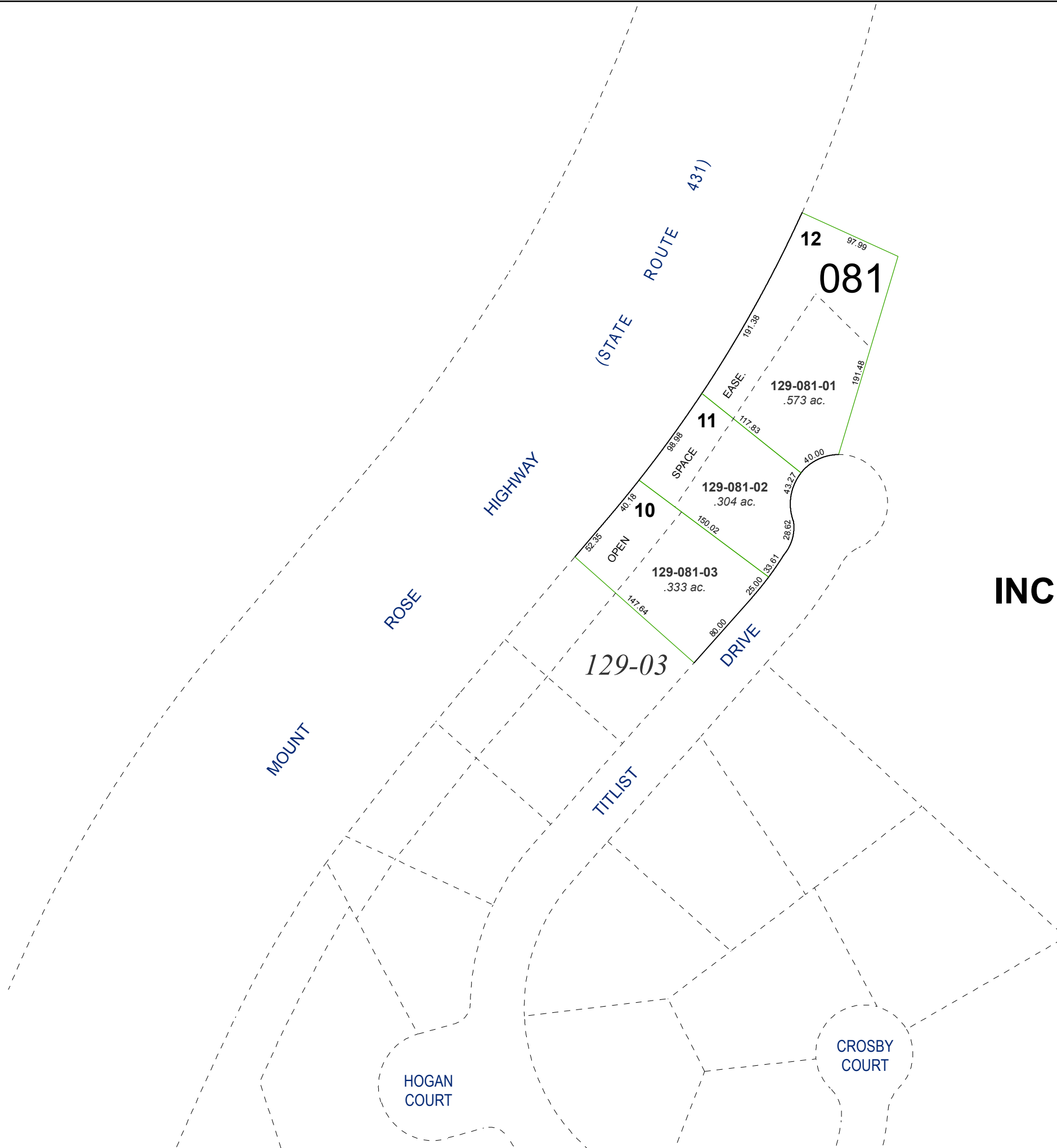
created by: JMO 9/21/2018

updated: _____

area previously shown on map(s):

129-02

(#1117)
INCLINE VILLAGE UNIT NO.3
PORTION OF SECTION 10
T16N - R18E



NOTE: This map was prepared for the use of the Washoe County Assessor for assessment and illustrative purposes only. It does not represent a survey of the premises. No liability is assumed as to the sufficiency or accuracy of the data delineated hereon.