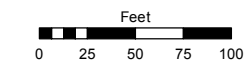
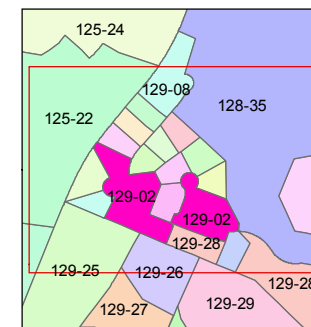
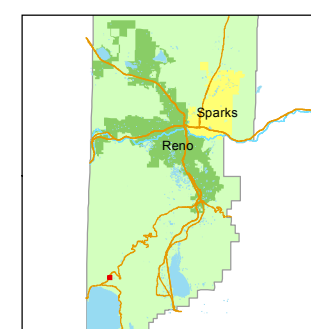


STATE OF NEVADA
WASHOE COUNTY
ASSESSOR'S OFFICE

1001 East Ninth Street, Building D
Reno, Nevada 89512
(775) 328-2231



1 inch = 100 feet



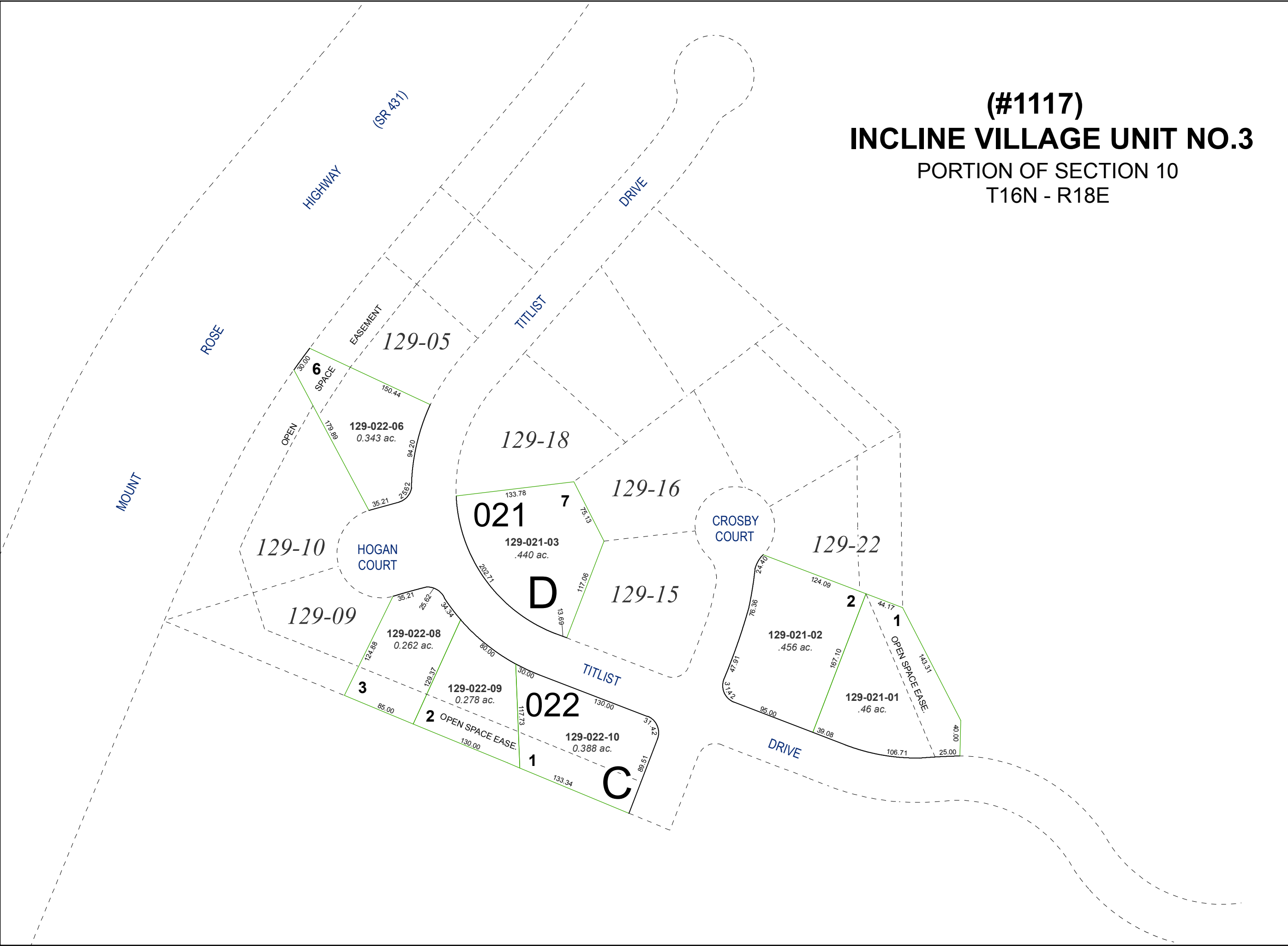
created by: JMO 9/21/2018

updated: _____

area previously shown on map(s):

NOTE: This map was prepared for the use of the Washoe County Assessor for assessment and illustrative purposes only. It does not represent a survey of the premises. No liability is assumed as to the sufficiency or accuracy of the data delineated hereon.

(#1117)
INCLINE VILLAGE UNIT NO.3
PORTION OF SECTION 10
T16N - R18E



MOUNT
ROSE
HIGHWAY (SR 431)

129-05
129-06
129-07
129-08
129-09
129-10
129-11
129-12
129-13
129-14
129-15
129-16
129-17
129-18
129-19
129-20
129-21
129-22
129-23
129-24
129-25
129-26
129-27
129-28