

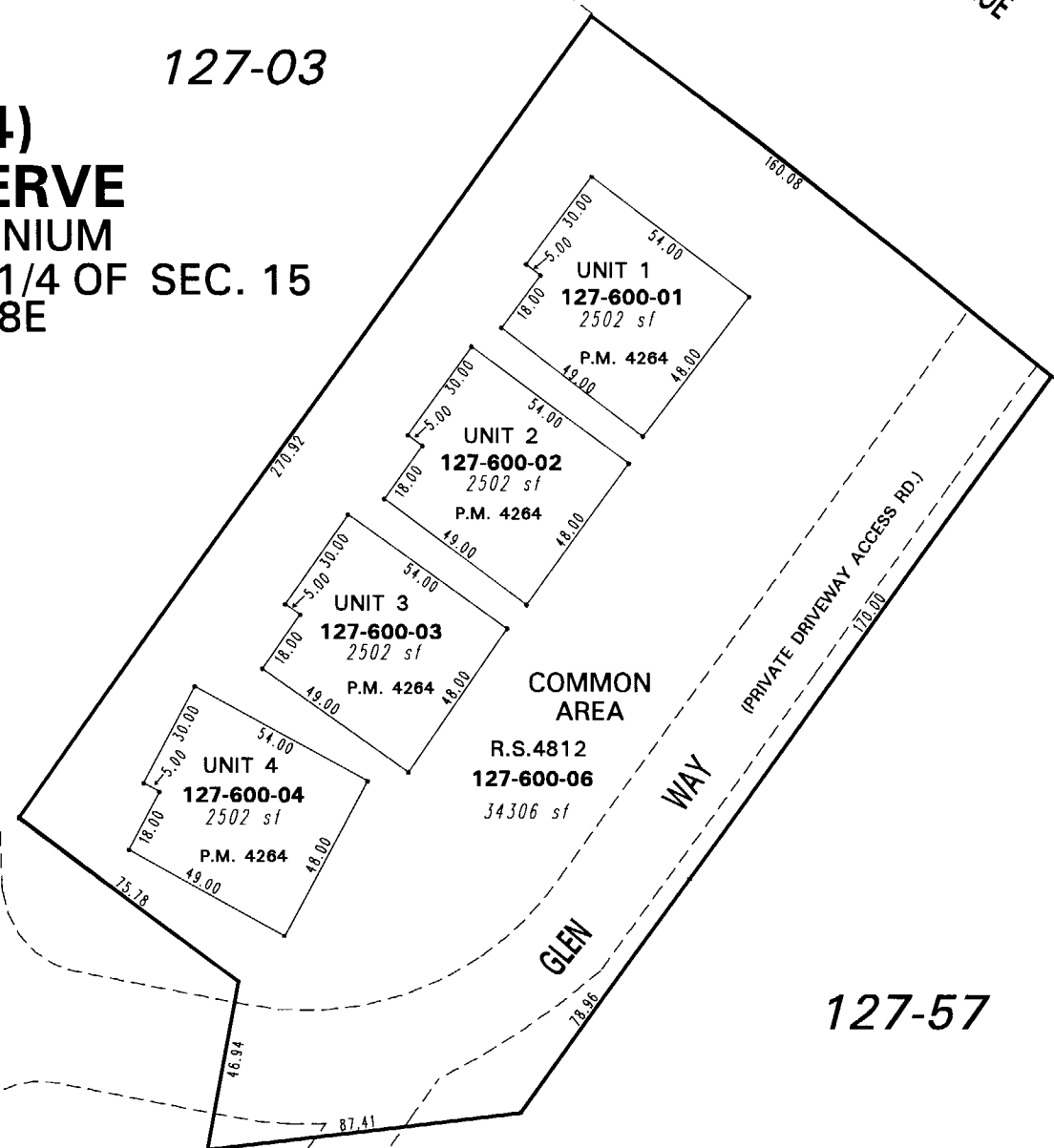
**(#4264)  
THE RESERVE  
A CONDOMINIUM  
PORTION OF THE SE 1/4 OF SEC. 15  
T16N - R18E**

127-03

127-59

127-57

127-03



TAHOE  
BOULEVARD

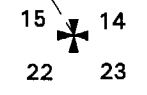
GLEN  
WAY

GLEN  
WAY

S 32° 05' 03" E  
1,207.75'



1" = 50'



NOTE: This map is prepared for the use of the Washoe County Assessor for assessment and illustrative purposes only. It does not represent a survey of the premises. No liability is assumed as to the sufficiency or the accuracy of the data delineated hereon.

Office of Washoe County Assessor, Nevada - Joshua G. Wilson

This area previously shown on 127-03

NOTE: Areas of parcels which are less than 2 acres are shown in square feet.

Drawn by	PK 10/14/04
Revised	CFB 4/24/2007