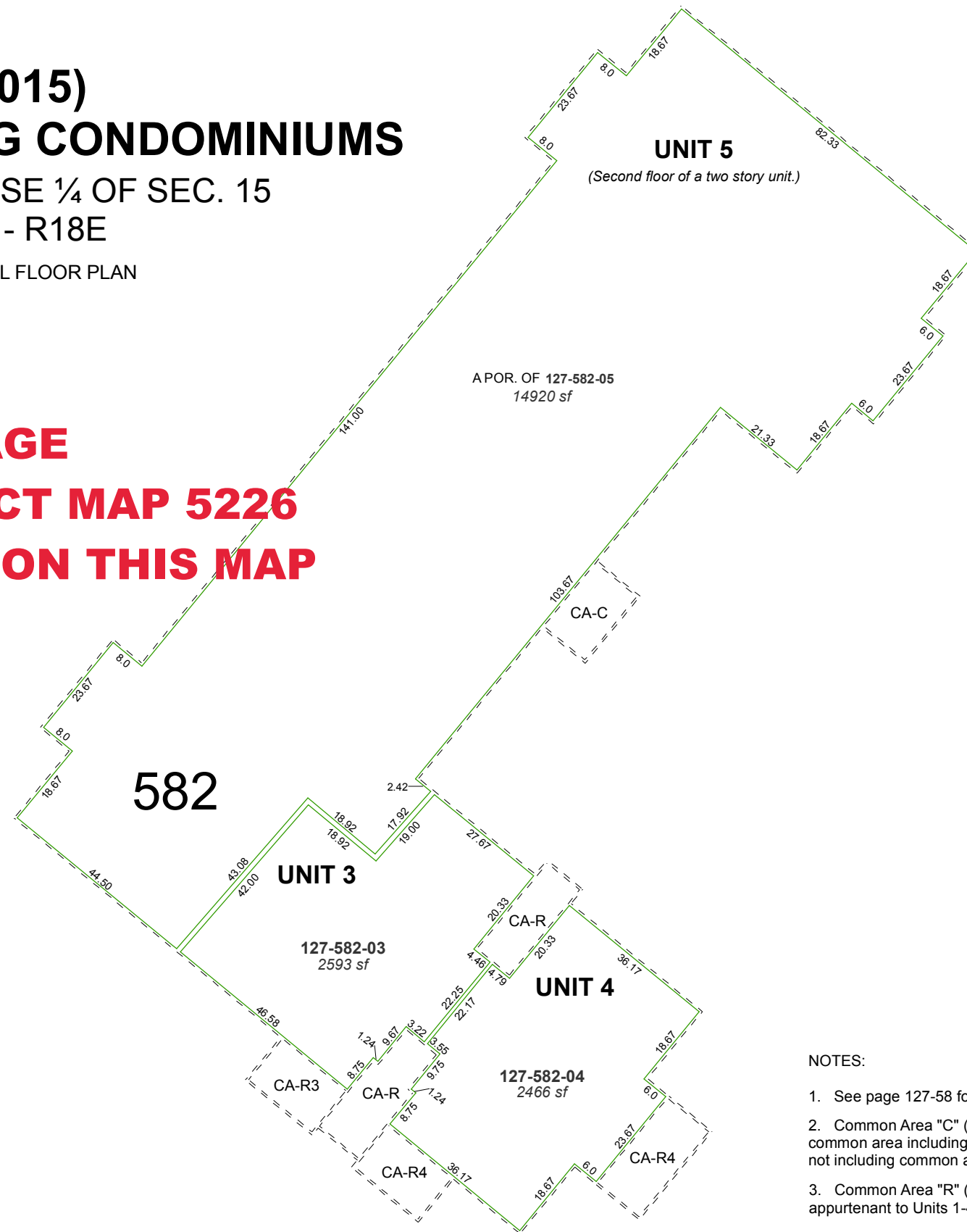


**(#4015)
EAGLES LANDING CONDOMINIUMS**

A POR. OF THE SE ¼ OF SEC. 15
T16N - R18E

THIRD LEVEL FLOOR PLAN

**REVERTED TO ACREAGE
PER REVERSION TRACT MAP 5226
NO ACTIVE PARCELS ON THIS MAP
SEE MAP 127-03**



NOTES:

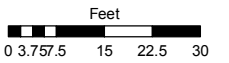
1. See page 127-58 for Common Area parcel.
2. Common Area "C" (CA-C) denotes entire first level common area including area appurtenant to Unit 5, but not including common areas appurtenant to Units 1-4
3. Common Area "R" (CA-R) denotes common areas appurtenant to Units 1-4 only.

Assessor's Map Number

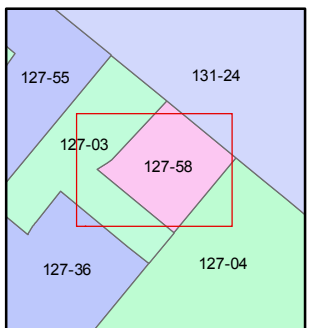
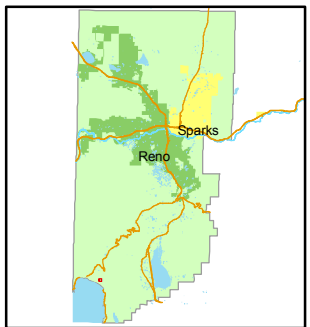
127-58-S3

STATE OF NEVADA
WASHOE COUNTY
ASSESSOR'S OFFICE
Joshua G. Wilson, Assessor

1001 East Ninth Street
Building D
Reno, Nevada 89512
(775) 328-2231



1 inch = 30 feet



created by: NLH 8/02/2010

last updated: _____

area previously shown on map(s)

127-03

NOTE: This map was prepared for the use of the Washoe County Assessor for assessment and illustrative purposes only. It does not represent a survey of the premises. No liability is assumed as to the sufficiency or accuracy of the data delineated herein.