

**INCLINE VILLAGE UNIT NO. 2**

PORTION OF S 1/2 OF SECTION 9  
T16N - R18E

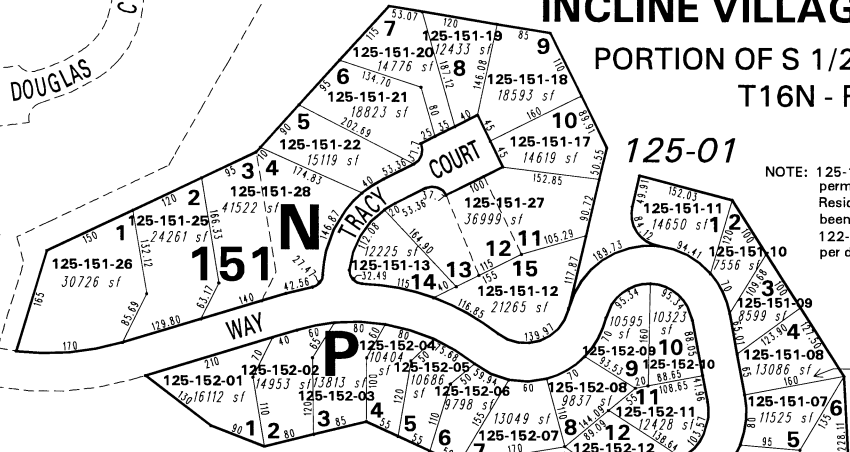
125-16

DORCEY DRIVE  
DOUGLAS COURT

125-01

NOTE: 125-151-13 is restricted to permanent open space. Residential allocation has been transferred to 122-193-24 or 122-193-25 per doc. no. 1354480

TYNER WAY



NOTE: Residential allocation has been transferred from 129-550-01 to 125-152-14 per doc. no. 1243858

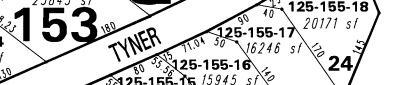
125-01

152

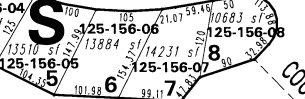
VALERIE WAY

125-14

R



156



125-14

125-01

TONI COURT

UNIT NO. 2  
UNIT NO. 4

NOTE: This map is prepared for the use of the Washoe County Assessor for assessment and illustrative purposes only. It does not represent a survey of the premises. No liability is assumed as to the sufficiency or the accuracy of the data delineated hereon.

Office of Washoe County Assessor, Nevada - Joshua G. Wilson

This area previously shown on \_\_\_\_\_

NOTE: Areas of parcels which are less than 2 acres are shown in square feet.

Drawn by TWT 05/29/03  
Revised TWT 9/12/08  
ARC INFO 9.2 WINDOWS 2000 5.0

