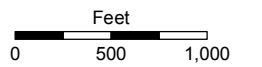
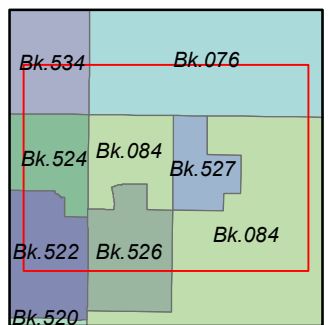
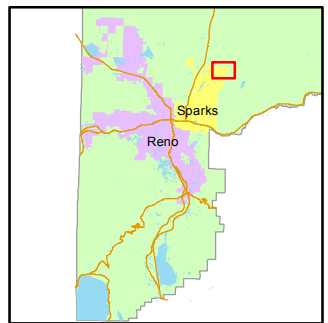


STATE OF NEVADA
WASHOE COUNTY
ASSESSOR'S OFFICE
 Michael E. Clark, Assessor

1001 East Ninth Street
 Building D
 Reno, Nevada 89512
 (775) 328-2231



1 inch = 1,000 feet



created by: CFB 02/22/2012

last updated: EMG 10/19/15

NOTE: This map was prepared for the use of the Washoe County Assessor for assessment and illustrative purposes only. It does not represent a survey of the premises. No liability is assumed as to the sufficiency or accuracy of the data delineated hereon.

T20N - R21E

