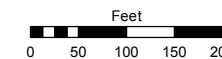


Assessor's Map Number

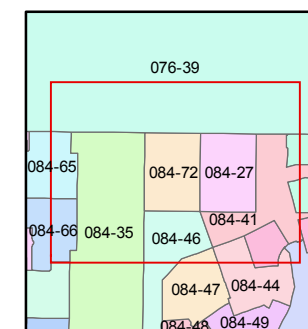
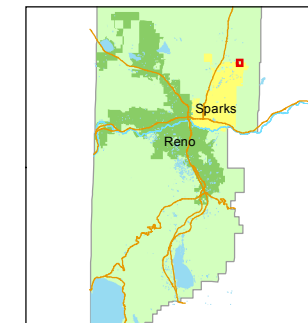
084-72

STATE OF NEVADA
WASHOE COUNTY
ASSESSOR'S OFFICE
Michael E. Clark, Assessor

1001 East Ninth Street
Building D
Reno, Nevada 89512
(775) 328-2231



1 inch = 200 feet



created by: EMG 10/16/2015

last updated: _____

area previously shown on map(s)

084-27

NOTE: This map was prepared for the use of the Washoe County Assessor for assessment and illustrative purposes only. It does not represent a survey of the premises. No liability is assumed as to the sufficiency or accuracy of the data delineated hereon.

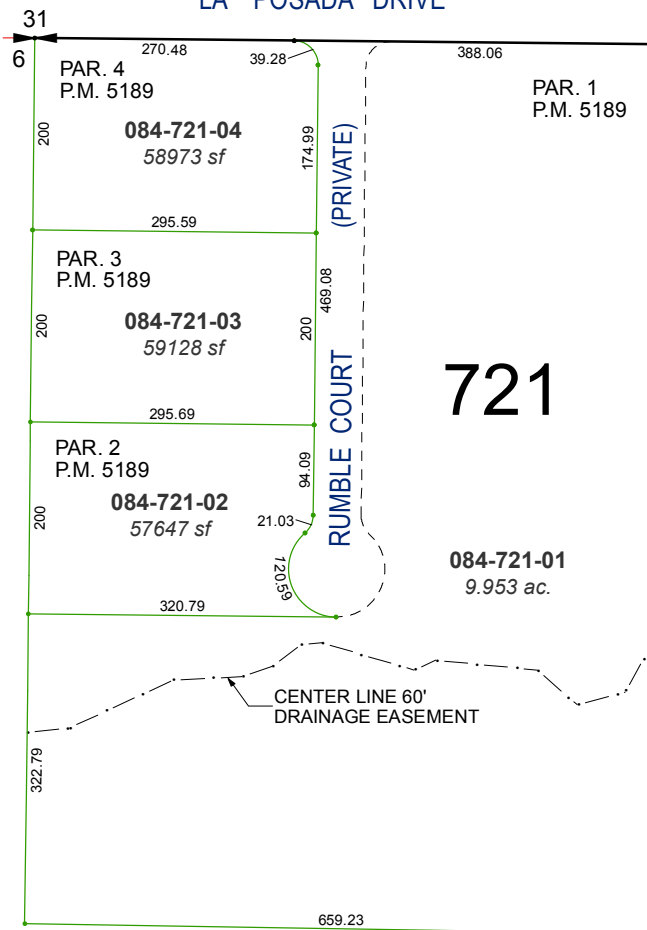
PORTION OF THE NE ¼ SECTION 6 T20N - R21E

WASHOE COUNTY GPS PT. S52SM01174
GROUND COORD.
N 14907709.18
E 2320856.28

CIELO VISTA DRIVE

EAGLENEST ROAD

LA POSADA DRIVE



N 67° 10' 46" E
1669.25