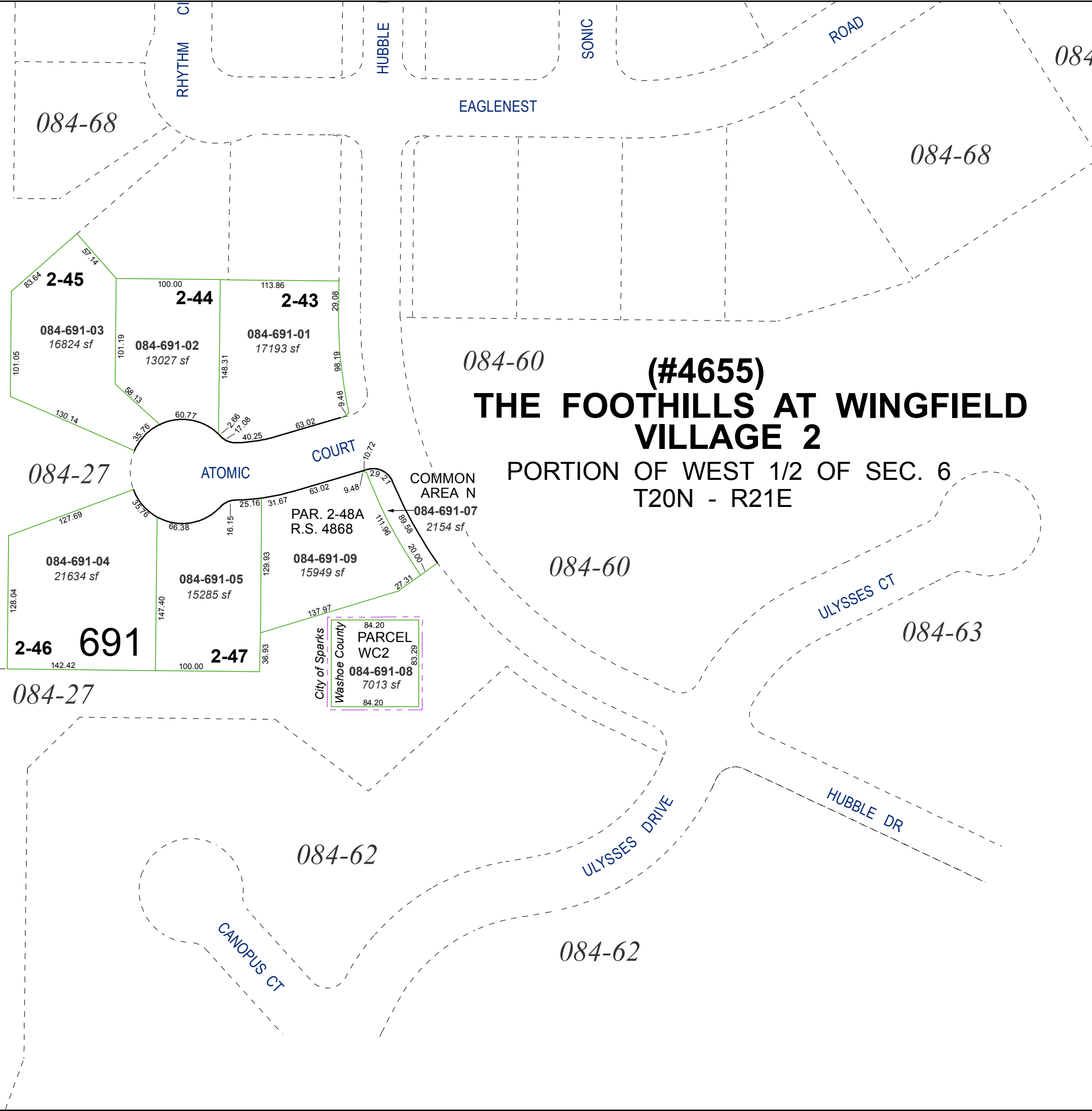


BOOK 524

SECTION 01, T20N - R20E

SECTION 06, T20N - R21E



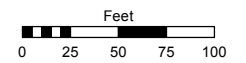
084-60 (#4655)  
**THE FOOTHILLS AT WINGFIELD VILLAGE 2**  
 PORTION OF WEST 1/2 OF SEC. 6  
 T20N - R21E

City of Sparks  
 Washoe County  
**PARCEL WC2**  
**084-691-08**  
 7013 sf

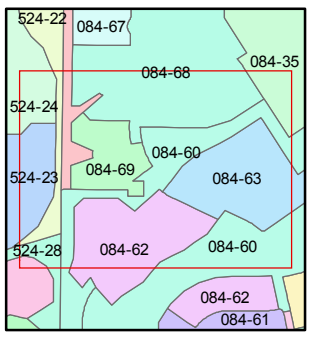
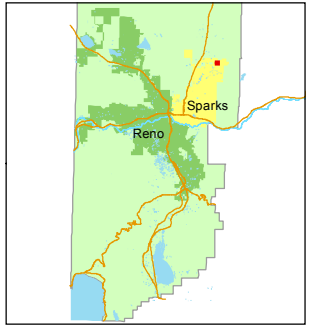
Assessor's Map Number  
**084-69**

STATE OF NEVADA  
**WASHOE COUNTY**  
**ASSESSOR'S OFFICE**  
 Joshua G. Wilson, Assessor

1001 East Ninth Street  
 Building D  
 Reno, Nevada 89512  
 (775) 328-2231



1 inch = 100 feet



created by: CFB 02/20/2014

last updated: \_\_\_\_\_

area previously shown on map(s)  
 \_\_\_\_\_

NOTE: This map was prepared for the use of the Washoe County Assessor for assessment and illustrative purposes only. It does not represent a survey of the premises. No liability is assumed as to the sufficiency or accuracy of the data delineated hereon.