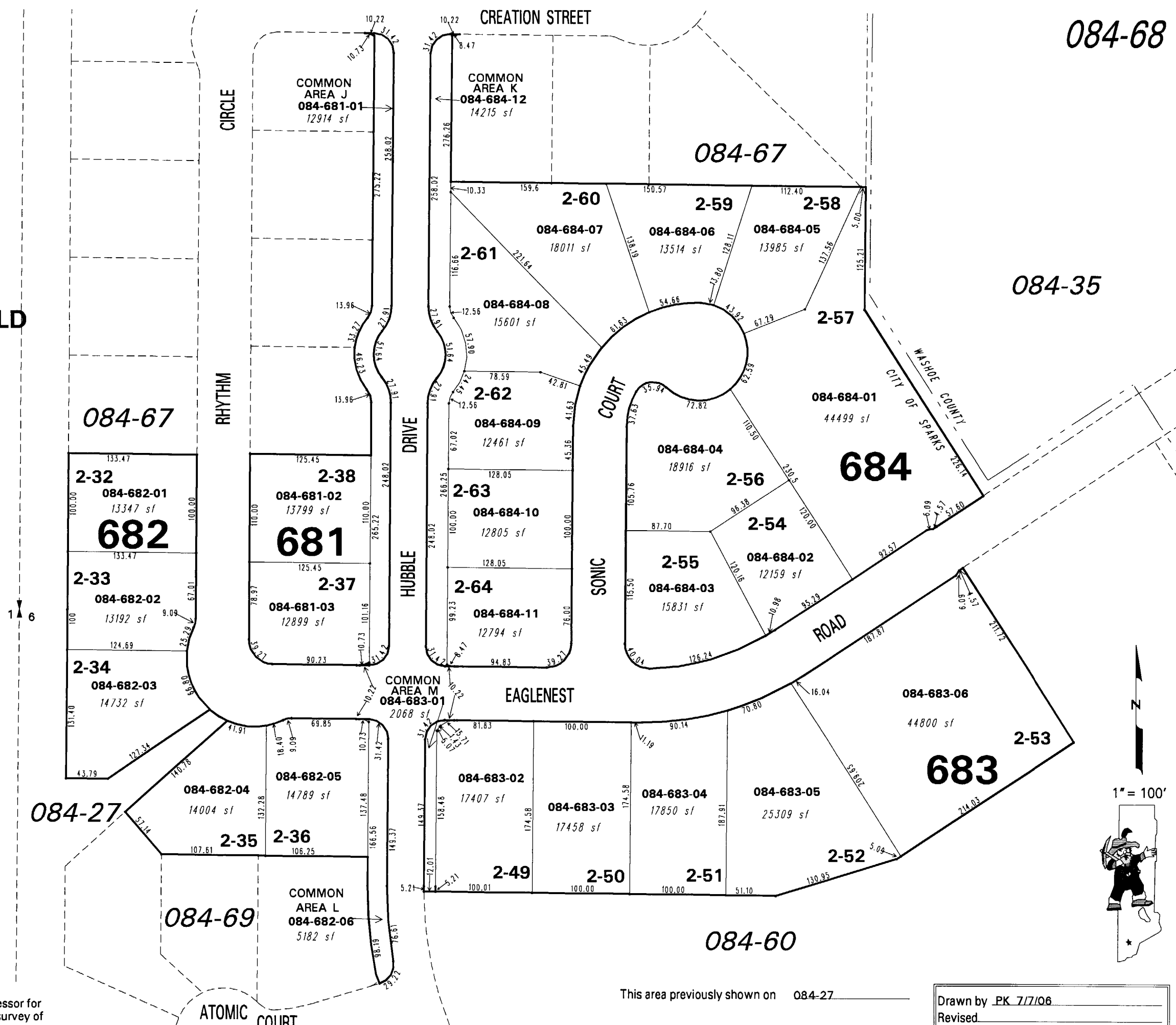


(#4655)
THE FOOTHILLS AT WINGFIELD
VILLAGE 2
PORTION OF WEST 1/2 OF SEC. 6
T20N - R21E

BOOK 524



NOTE: This map is prepared for the use of the Washoe County Assessor for assessment and illustrative purposes only. It does not represent a survey of the premises. No liability is assumed as to the sufficiency or the accuracy of the data delineated hereon.

Office of Washoe County Assessor, Nevada - Robert W. McGowan

This area previously shown on 084-27

NOTE: Areas of parcels which are less than 2 acres are shown in square feet.

Drawn by	PK 7/7/06
Revised	

